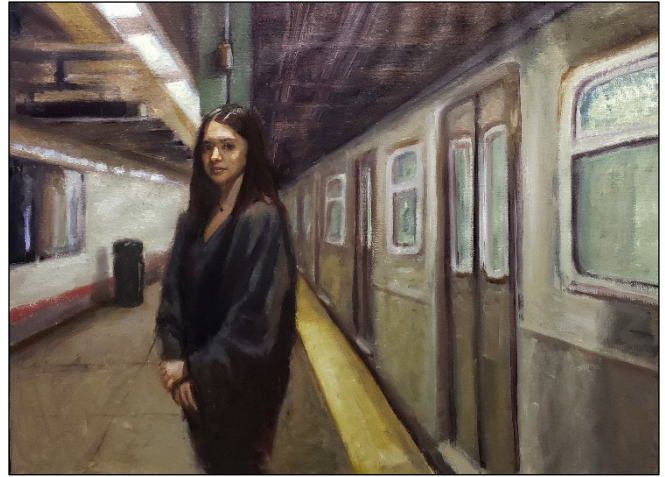


June 12 through August 7, 2022

*Something
Sentimental*
paintings by
Carlos Soto
of Augusta, Kansas



Mona's Train by Carlos Soto

Artist Statement

In painting I've kept a traditional manner, to the likes of Anders Zorn and John Singer Sargent. I try to keep my brushwork loose, to simply understand light and shadow. My subjects have all been about finding joy in the hard and loneliest of times. Finding value in something broken. Even in my own self-portraits, I have to reflect on getting old and value myself as a person. It is what keeps me moving, painting, and finding something sentimental, something sacred.

Biography

Carlos Soto is a traditional oil painter who works in oil paints and charcoal drawing – practicing loose brushwork. He uses turpenoid to thin, and odorless spirits to clean his brushes. In between drying, he will apply a thin coat of Liquin to even out the sheen of the surface. He continues this process until the painting is done and ready to be varnished. Soto has been oil painting for over 20 yrs. He grew up in Fort Worth, Texas, and after joining the Airforce settled in Wichita, Kansas. He now lives in nearby Augusta with his wife Shannon, daughter Lucy, and son Zealand.



Birger Sandzen
- MEMORIAL GALLERY -

401 N. First Street, PO Box 348, Lindsborg, KS 67456

(785) 227-2220 sandzengallery@gmail.com www.sandzen.org

Gallery Hours: Tuesday through Saturday from 10 a.m. to 5 p.m. and Sunday, 1 to 5 p.m.