

Lithographic Prints by Birger Sandzén



Notes to the Catalogue Entries

This is the beginning of a complete catalogue raisonné of the 328 prints of Birger Sandzén (1871-1954), expanding Charles Pelham Greenough's 1952 work, *The Graphic Work of Birger Sandzén*. The Sandzén Gallery will be updating online entry pages regularly, with the goal of publishing by 2019.

Readers are encouraged to send corrections and suggestions to the Gallery, emailing Curator Cori Sherman North at corinorth@gmail.com.

Photographs of each print appear first on an entry page. Old images will be upgraded over time.

The original Greenough catalogue numbers appear following image(s) on each page. These numbers were assigned chronologically, within the three medium categories: Lithograph (L), Blockprint (B), and Drypoints (D).

Titles and any alternate titles Sandzén inscribed on print lower margins are listed.

Height precedes width in the image dimensions, followed by signatures included in block, plate, or stone.

Sanzén did not number his editions. His inscription practice was to sign and title each print in pencil in the lower margin, so "inscription" description will not be given in entries.

Public Collections abbreviations:

BSMG.....Birger Sandzén Memorial Gallery, Lindsborg, KS
BM.....British Museum, London, England
BMA.....Marianna Kistler Beach Museum of Art, Kansas State University, Manhattan, KS
CMA.....Chazen Museum of Art, University of Wisconsin-Madison, Madison, WI
DAM.....Denver Art Museum, Denver, CO
DMAC.....Des Moines Art Center, Des Moines, IA
DPL.....Denver Public Library, Denver, CO
DtPL.....Detroit Public Libray, Detroit, MI
EM.....Evansville Museum, Evansville, IN
FAMSF.....Fine Art Museums of San Francisco, San Francisco, CA
FJJMA.....Fred Jones, Jr. Museum of Art, University of Oklahoma, Norman, OK
GKM.....Goteborgs Konstmuseum, Gothenburg, Sweden
GMA.....Georgia Museum of Art, University of Georgia, Athens, GA
HAM.....Harvard Art Museums, Harvard University, New Haven, CT
IMA.....Indianapolis Museum of Art, Indianapolis, IN
KMFDA.....Kirkland Museum of Fine & Decorative Art, Denver, CO
LACMA.....Los Angeles County Museum of Art, Los Angeles, CA
LC.....Library of Congress, Washington, D.C.
MAA.....Museum of Art and Archaeology, University of Missouri, Columbia, MO

MAM.....McNay Art Museum, San Antonio, TX
MFAH.....Museum of Fine Arts Houston, Houston, TX
Mia.....Minneapolis Institute of Art, Minneapolis, MN
MMA.....Maier Museum of Art, Randolph College, Lynchburg, VA
MNM.....Museum of New Mexico, Santa Fe, NM
MSAC.....McPherson Schools Art Collection, McPherson, KS
MTTU.....Museum of Texas Tech University, Lubbock, TX
NAMA.....Nelson-Atkins Museum of Art, Kansas City, MO
NEHMA.....Nora Eccles Harrison Museum of Art, Utah State University, Logan, UT
NGA.....National Gallery of Art, Washington, D.C.
NM.....Nationalmuseum, Stockholm, Sweden
NYPL.....New York Public Library, New York City, NY
OKCMA.....Oklahoma City Museum of Art, Oklahoma City, OK
PAM.....Portland Art Museum, Portland, OR
PMA.....Philadelphia Museum of Art, Philadelphia, PA
SAAM.....Smithsonian American Art Museum, Washington, D.C.
SMA.....Helen Foresman Spencer Museum of Art, University of Kansas, Lawrence, KS
SMAUNL.....Sheldon Museum of Art, University of Nebraska-Lincoln, Lincoln, NE
WAM.....Wichita Art Museum, Wichita, KS
YUAG.....Yale University Art Gallery, Yale University, New Haven, CT



L - 1

Colorado Pines

Date: 1916, February

Medium: lithograph on paper

Image Size: 14 ¾ x 11 in., signature in stone “B. S.” in lower right

Edition: 50 impressions, single state

Printer: Ketterlinus Lithographic Manufacturing Co., Philadelphia

Reproductions:

Exhibitions:

Collections: BSMG

Notes: Illustrated in Greenough, *Graphic Works*, 4th edition, p.41. Motif of Boulder, Colorado. First print made, the 50 proofs received by Birger Sandzén on February 12, 1916. Impression sent to the Department of Fine Arts in France as a gift from the State of Kansas in 1919.



L - 2

Dry Creek

Alternate Title: *The Dry Creek*

Date: 1916, February

Medium: lithograph on paper

Image Size: 11 7/8 x 17 7/8 in., signature in stone "B. S." in lower left

Edition: 50 impressions, single state

Printer: Ketterlinus Lithographic Manufacturing Co., Philadelphia

Reproductions:

Exhibitions:

Collections: BSMG, FJJMA, MNM, NM, SMA

Notes: Illustrated in Greenough, *Graphic Works*, 4th edition, p.41. Scene of Wild Horse Creek in Graham County, Kansas.

Second print made, 50 proofs received by Birger Sandzén on February 12, 1916, along with first lithograph's edition.

Impression sent to the Department of Fine Arts in France as a gift from the State of Kansas in 1919.



L - 3

In the Mountains

Date: 1916

Medium: lithograph on paper

Image Size: 11 7/8 x 17 7/8 in., signature in stone "B. S." in lower right

Edition: 50 impressions, single state

Printer: Ketterlinus Lithographic Manufacturing Co., Philadelphia

Reproductions:

Exhibitions:

Collections: BSMG, FJJMA, NM, SMA, YUAG

Notes: Scene of Boulder, Colorado.

50 proofs received by Birger Sandzén on March 12, 1916.

Impression sent to the Department of Fine Arts in France as a gift from the State of Kansas in 1919.



L - 4

Stony Pasture with Cottonwood Grove

Alternate Title: Stony Pasture with Trees

Date: 1916

Medium: lithograph on paper

Image Size: 11 7/8 x 17 7/8 in., signature in stone "B. S." in lower left

Edition: 50 impressions, single state

Printer: Ketterlinus Lithographic Manufacturing Co., Philadelphia

Reproductions:

Exhibitions:

Collections: BSMG, LC, NM

Notes: Motif from the Leksell family (Sandzen's in-laws) farm, in Graham County, Kansas.

50 proofs received by Birger Sandzén on March 12, 1916.

Impression sent to the Department of Fine Arts in France as a gift from the State of Kansas in 1919.



L – 5

In the Desert

Alternate Title: *In the Desert, Arizona*

Date: 1916

Medium: lithograph on paper

Image Size: 11 ¾ x 17 7/8 in., signature in stone “B. S-n” in lower right

Edition: 50 impressions, single state

Printer: Ketterlinus Lithographic Manufacturing Co., Philadelphia

Reproductions:

Exhibitions:

Collections: BSMG, MNM

Notes: Motif from the outskirts of the Painted Desert in Arizona.
50 proofs received by Birger Sandzén on May 24, 1916.



L - 6

In the Grand Canyon

Date: 1916

Medium: lithograph on paper

Image Size: 11 ¾ x 17 7/8 in., signature in stone "B. S-n" in lower right

Edition: 50 impressions, single state

Printer: Ketterlinus Lithographic Manufacturing Co., Philadelphia

Reproductions:

Exhibitions:

Collections: BSMG, DtPL

Notes: Scene of the Grand Canyon, in Arizona.
50 proofs received by Birger Sandzén on May 24, 1916.



L - 7

Solitude

Date: 1916

Medium: lithograph on paper

Image Size: 7 x 10 in., signature in stone "B. S" in lower left, near center

Edition: 50 impressions, single state

Printer: Ketterlinus Lithographic Manufacturing Co., Philadelphia

Reproductions:

Exhibitions:

Collections: BSMG, LC

Notes: Illustrated in Greenough, *Graphic Works*, 4th edition, p.20. Scene of Buffalo Park, Colorado.

50 proofs received by Birger Sandzén on July 11, 1916.



L - 8

Sunset in the Mountains

Date: 1916

Medium: lithograph on paper

Image Size: 7 x 10 in., signature in stone "B. S" in lower right

Edition: 50 impressions, single state

Printer: Ketterlinus Lithographic Manufacturing Co., Philadelphia

Reproductions:

Exhibitions:

Collections: BSMG

Notes: Scene from Buffalo Park, Colorado.

50 proofs received by Birger Sandzén on July 11, 1916.



L - 9

Lake in the Mountains

Alternate Title: *The Mountain Lake*

Date: 1916

Medium: lithograph on paper

Image Size: 11 7/8 x 17 3/4 in., signature in stone "B. S" in lower right

Edition: 50 impressions, single state

Printer: Ketterlinus Lithographic Manufacturing Co., Philadelphia

Reproductions:

Exhibitions:

Collections: BSMG, LC, MNM, NYPL, YUAG

Notes: Scene from Lake Wellington, approximately 12 miles south of Bailey, Colorado.
50 proofs received by Birger Sandzén on December 9, 1916.



L - 10

In the Park

Date: 1917

Medium: lithograph on paper

Image Size: 7 x 10 in., signature in stone "B. S-n." in lower left

Edition: 50 impressions, single state

Printer: Ketterlinus Lithographic Manufacturing Co., Philadelphia

Reproductions:

Exhibitions:

Collections: BSMG, FAMSF, NAMA

Notes: Illustrated in Greenough, *Graphic Works*, 4th edition, p.42. Scene of Swensson Park in Lindsborg, just west of the Sandzén family home.

"Illustrated in ""Graphic Works"""



L - 11

Breakers

Date: 1917

Medium: lithograph on paper

Image Size: 11.785 x 17.872 in., signature in stone "B. S-n" in lower left.

Edition: 50 impressions, single state.

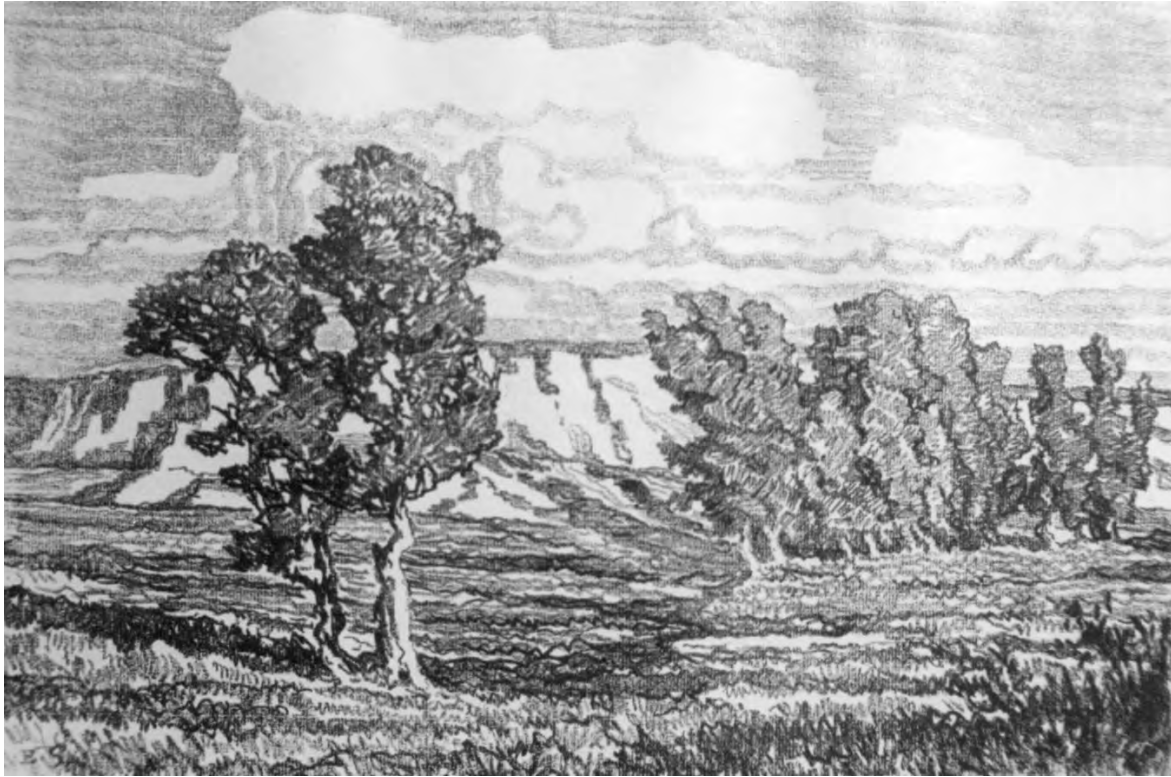
Printer:

Reproduction:

Exhibitions:

Collections: NYPL, NM, GKM, YUAG.

Notes: Motif from off the coast of California.



L - 12

In the Meadow

Date: 1917

Medium: lithograph on paper

Image size: 11.875 x 17.75 in., signature in stone "B. S." in lower left.

Edition: 50 impressions, single state.

Printer:

Reproductions:

Exhibitions:

Collections: LC

Notes: From the Leksell farm in Graham County, Kansas.



L - 13

Waves

Date: 1917

Medium: lithograph on paper.

Image Size: 11.875 x 17.75 in., signature in stone "B. S-n" in lower left.

Edition: 50 impressions, single state.

Printer:

Reproduction:

Exhibitions:

Collections:

Notes: Motif from off the coast of California.

Sent to the Dept. of Fine Arts in France as a gift from the State of Kansas in 1919.



L - 14

Gray Day in the Mountains

Date: 1917

Medium: lithograph on paper

Image Size: 16 x 24 in., signature in stone "B.S." in lower right.

Edition: 50 impressions, single state.

Printer:

Reproduction:

Exhibitions:

Collections: NYPL, BM. NM. YUAG, GKM.

Notes: Motif from the Arapahoe Peaks in the Indian Peaks Wilderness west of Boulder, Colorado.

The Art Institute of Chicago



L - 15

Old Cottonwood Trees

Date: 1917

Medium: lithograph on paper

Image Size: 11.875 x 17.75 in., signature in stone "B. S." in lower left. (right of small clump)

Edition: 50 impressions, single state.

Printer:

Reproduction:

Exhibitions:

Collections: YUAG

Notes: Motif from near Lindsborg.



L - 16

Twilight

Date: 1917

Medium: lithograph on paper

Image Size: 12 x 17.75 in., signature in stone "B. S-n" in lower right.

Edition: 50 impressions, single state.

Printer:

Reproduction:

Exhibitions:

Collections: LC

Notes: Motif from a cottonwood grove northwest of Lindsborg. "Sent to the Dept. of Fine Arts in France as a gift from the State of Kansas in 1919. Illustrated in ""Graphic Works"""



L - 17

Hilly Pasture with Cows

Alternative Title: *Cows in a Hilly Pasture*

Date: 1917

Medium: lithograph on paper

Image Size: 12 x 17.875 inches, signature in stone "B. S-n" in lower left.

Edition: 50 impressions, one state

Printer:

Reproduction:

Exhibitions:

Collections: BM, Boise Art Museum, NM, GKM

Notes: Motif of cows from a pasture close to Coronado Heights, northwest of Lindsborg. "Sent to the Dept. of Fine Arts in France as a gift from the State of Kansas in 1919. Illustrated in ""Graphic Works"""



L - 18

Ornunga Old Church

Alternative Title: *Old Ornunga Church*

Date: 1917

Medium: lithograph on paper

Image Size: 12 x 17.75 inches, signature in stone "B. S." in lower right (in road).

Edition: 50 impressions

Printer:

Reproduction:

Exhibitions:

Collections: NM, YUAG

Notes: Motif of church in Vastergotland, Sweden



L - 19

Loco Fiend

Alternative Title: *A Loco Fiend*

Date: 1917

Medium: lithograph on paper

Image Size: 12 x 17.75 inches, signature in stone "Birger Sandzén" in lower right.

Edition: 50 impressions

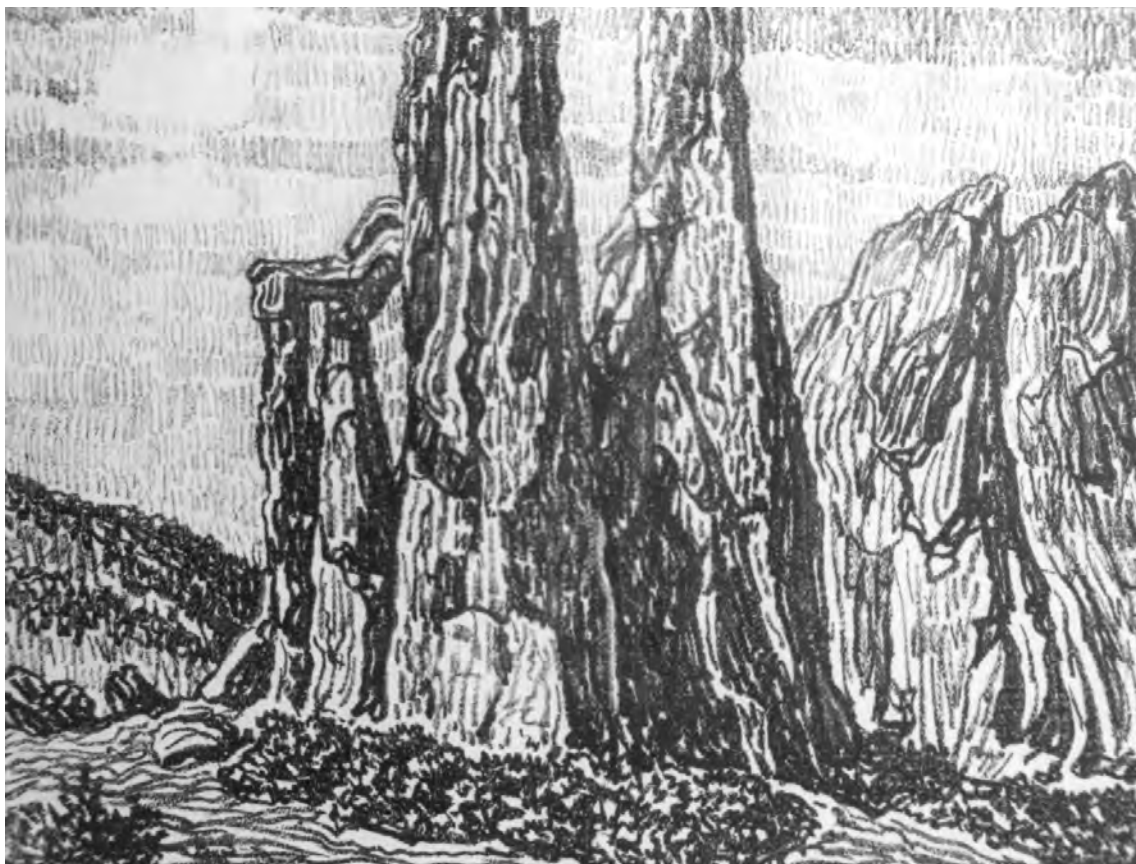
Printer:

Reproduction:

Exhibitions:

Collections:

Notes: Study from the Leksell farm in Graham County, Kansas.



L - 20

In the Garden of the Gods

Date: 1917

Medium: lithograph on paper

Image Size: 15 x 19.875 inches, signature in stone "B. S-n" in lower left.

Edition: 50 impressions

Printer:

Reproduction:

Exhibitions:

Collections:

Notes: Study of Cathedral Spires in the Garden of the Gods, Colorado Springs, Colorado. Scratch marks evident in the inked area.



L - 21

In the Garden of the Gods

Date: 1917

Medium: lithograph on paper

Image Size: 15 x 20 inches, signature in stone "B. S-n" in lower left.

Edition: 50 editions

Printer:

Reproduction:

Exhibitions:

Collections: MNM, NM, YUAG, SAAM

Notes: Study of Cathedral Spires in the Garden of the Gods, Colorado Springs, Colorado.



L - 22

Top of Salemsborg Hill

Date: 1917

Medium: lithograph on paper

Image Size: 11.875 x 17.5 inches, signature in stone "Birger Sandzén" in lower right.

Edition: 100 impressions

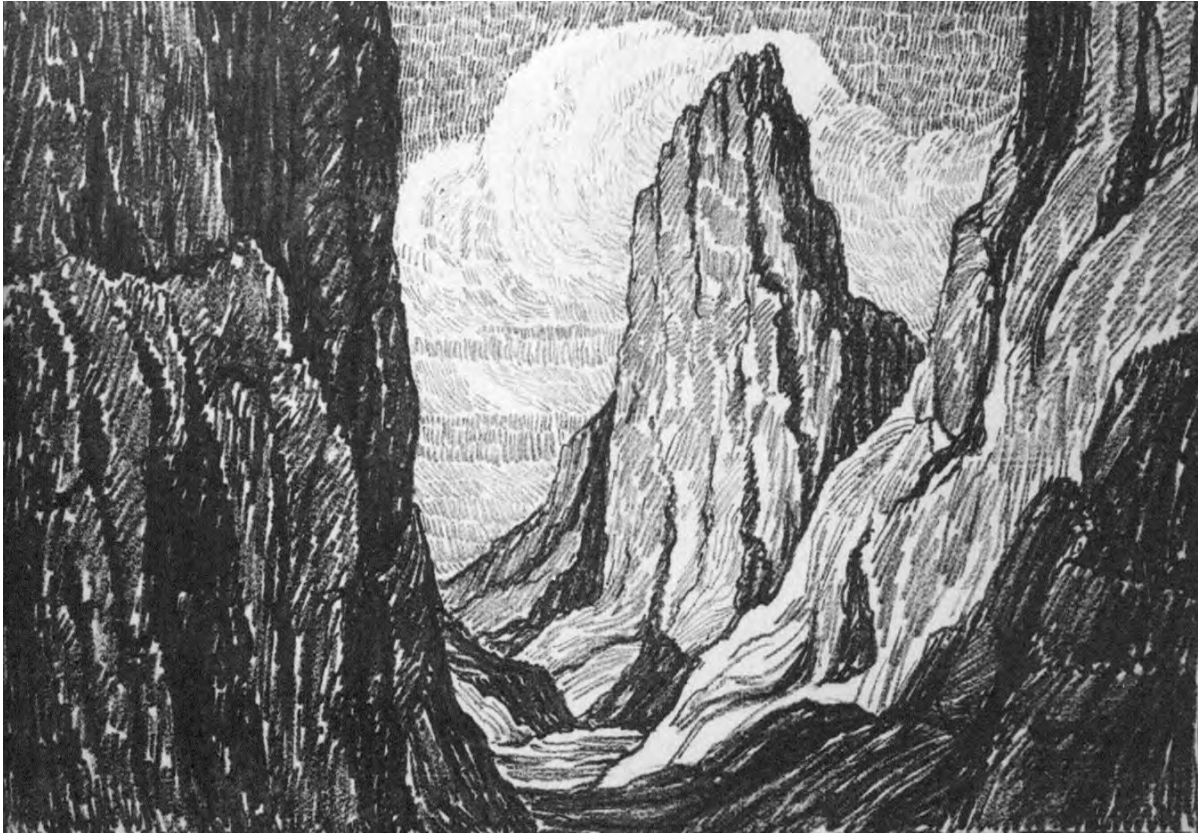
Printer:

Reproduction:

Exhibitions:

Collections:

Notes: Motif from Salemsborg Hill located 6 miles north of Coronado Heights.



L - 23

Sentinel Rock

Date: 1917

Medium: lithograph on paper

Image Size: 16 x 23 inches, unsigned image.

Edition: 100 impressions

Printer:

Reproduction:

Exhibitions:

Collections: YUAG

Notes: From the Garden of the Gods, Colorado. Sent to the Dept. of Fine Arts in France as a gift from the State of Kansas in 1919.



L - 24

Midsummer

Alternative Title: *Smoky River*

Date: 1918

Medium: lithograph on paper

Image Size: 16 x 24 inches, signature in stone "B. S." in lower left.

Edition: 50 impressions

Printer:

Reproduction:

Exhibitions:

Collections:

Notes: Smoky River motif from south of Lindsborg. Sent to the Dept. of Fine Arts in France as a gift from the State of Kansas in 1919.



L - 25

Glimpse of the Grand Canyon

Date: 1918

Medium: lithograph on paper

Image Size: 16 x 23.875 inches, signature in stone "B. S-n" in lower left of center.

Edition: 50 impressions

Printer:

Reproduction:

Exhibitions:

Collections: MNM, Colorado Springs Fine Arts Center

Notes: Close to the El Tovar Hotel at the Grand Canyon in Arizona. Sent to the Dept. of Fine Arts in France as a gift from the State of Kansas in 1919.



L - 26

River Motif

Date: 1918

Medium: lithograph on paper

Image Size: 16 x 23.75 inches, signature in stone "Birger Sandzén" in lower left.

Edition: 50 impressions

Printer:

Reproduction:

Exhibitions:

Collections: LC

Notes: Motif from the Smoky River south of Lindsborg



L - 27

Abandoned Mill

Alternative Title: *Abandoned Zinc Mill*

Date: 1918

Medium: lithograph on paper

Image Size: 15 x 20 inches, signature in stone "Birger Sandzén" in lower right.

Edition: 50 impressions

Printer:

Reproduction:

Exhibitions:

Collections:

Notes: An abandoned Zinc Mill about 30 miles from Boulder, Colorado. Sent to the Dept. of Fine Arts in France as a gift from the State of Kansas in 1919.



L - 28

Aspens

Date: 1918

Medium: lithograph on paper

Image Size: 20 x 15 inches, signature in stone "B. S-n" in lower left.

Edition: 50 impressions

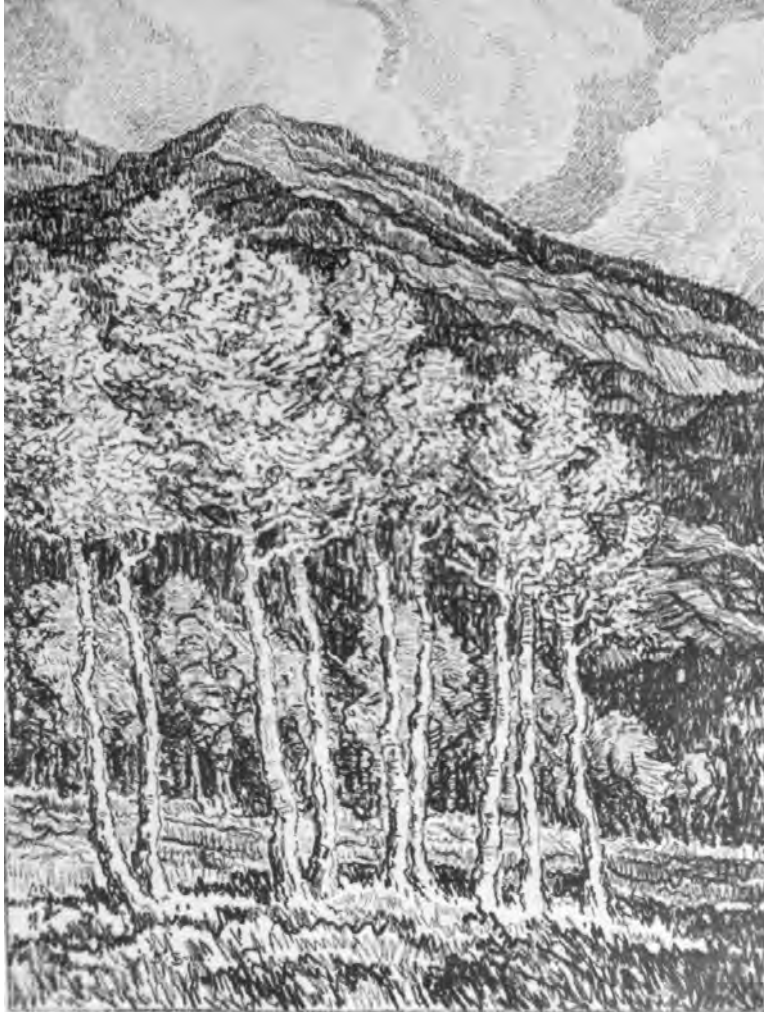
Printer:

Reproduction:

Exhibitions:

Collections: FJJMA

Notes: Motif from Rocky Mountain National Park in Colorado



L - 28a

Aspens

Date: 1918

Medium: lithograph on paper

Image Size: 20.125 x 15.125 inches

Edition: only one printed.

Printer:

Reproduction:

Exhibitions:

Collections:

Notes: Motif from Rocky Mountain National Park in Colorado Print was withdrawn due to faulty printing



L - 29

Three Owls

Alternative Title: *Three Sleepy Owls*

Date: 1918

Medium: lithograph on paper

Image Size: 14.875 x 19.75 inches, signature in stone "Birger Sandzén" in lower left.

Edition: 50 impressions

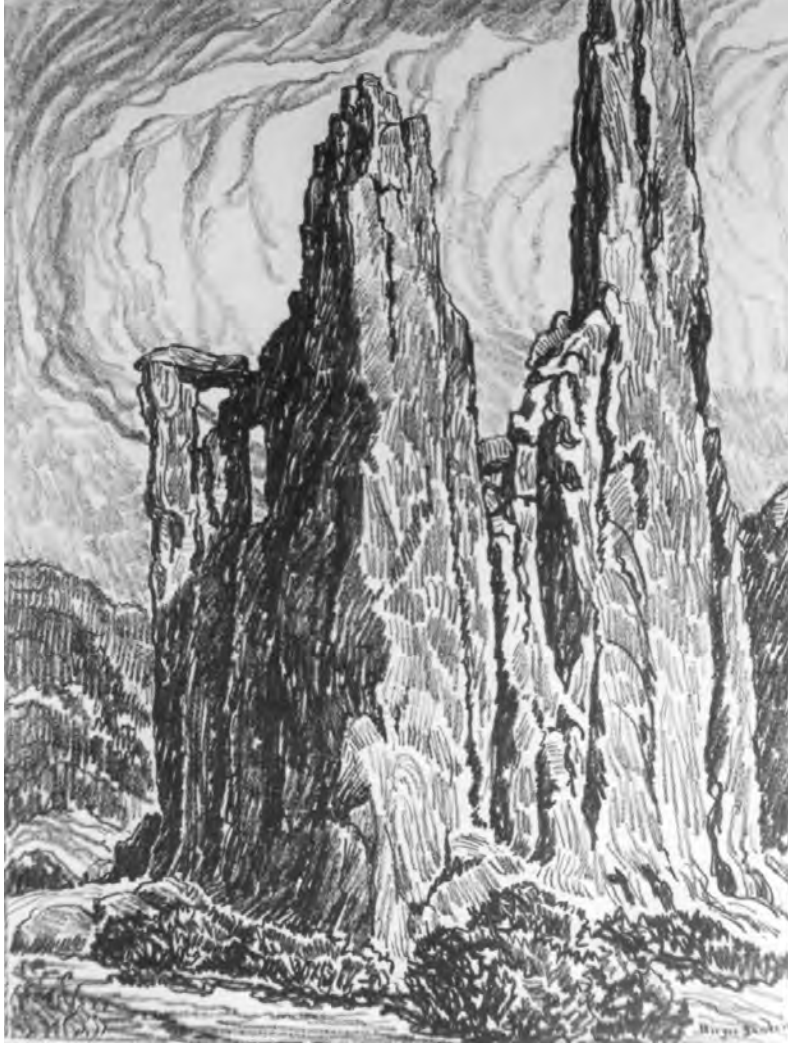
Printer:

Reproduction:

Exhibitions:

Collections:

Notes: Sketch completed after owls belonging to G. N. Malm of Lindsborg. "Illustrated in ""Graphic Works"""



L - 30

Cathedral Spires

Date: 1918

Medium: lithograph on paper

Image Size: 20 x 15 inches, signature in stone "Birger Sandzén" in lower right.

Edition: 50 impressions

Printer:

Reproduction:

Exhibitions:

Collections: NYPL, SAAM

Notes: From the Garden of the Gods, Colorado.



L - 31

Road in the Wilderness

Date: 1918

Medium: lithograph on paper

Image Size: 15.875 x 23.875 inches, signature in stone "Birger Sandezén" in lower left.

Edition: 50 impressions

Printer:

Reproduction:

Exhibitions:

Collections: DtPL, Metropolitan Museum, New York, NM, Memorial Art Gallery, University of Rochester, NY; Boston Public Library Print Dept, GKM

Notes: From Rocky Mountain National Park in Colorado. Sent to the Dept. of Fine Arts in France as a gift from the State of Kansas in 1919.



L - 32

Glimpse of the Rockies

Date: 1918

Medium: lithograph on paper

Image Size: 7.125 x 10 inches, signature in stone "B. S-n (reversed)" in lower right.

Edition: 50 impressions

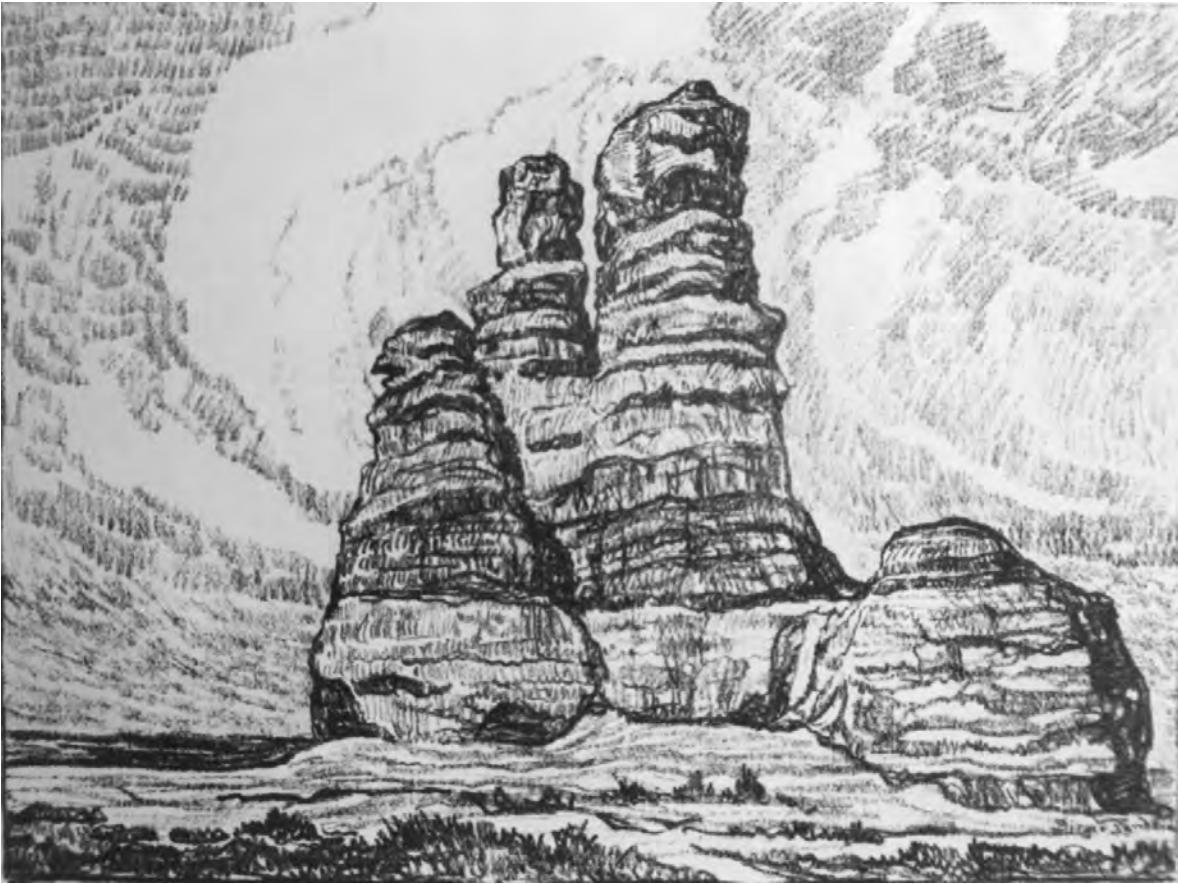
Printer:

Reproduction:

Exhibitions:

Collections:

Notes: From Rocky Mountain National Park in Colorado.



L - 33

The Prairie Castle

Date: 1918

Medium: lithograph on paper

Image Size: 15 x 20 inches, signature in stone "Birger Sandzén" in lower right.

Edition: 50 impressions

Printer:

Reproduction:

Exhibitions:

Collections:

Notes: Castle Rock, Gove County, Kansas Castle Rock, Gove County, Kansas.



L - 34

The Sentinel

Date: 1918

Medium: lithograph on paper

Image Size: 14.875 x 20 inches, signature in stone "B.S-n" in lower left.

Edition: 50 impressions

Printer:

Reproduction:

Exhibitions:

Collections:

Notes: From the Garden of the Gods, Colorado



L - 35

Old Cedar and Rocks

Date: 1919

Medium: lithograph on paper

Image Size: 14.875 x 19.875 inches, signature in stone "Birger Sandzén" in lower left.

Edition: 50 impressions

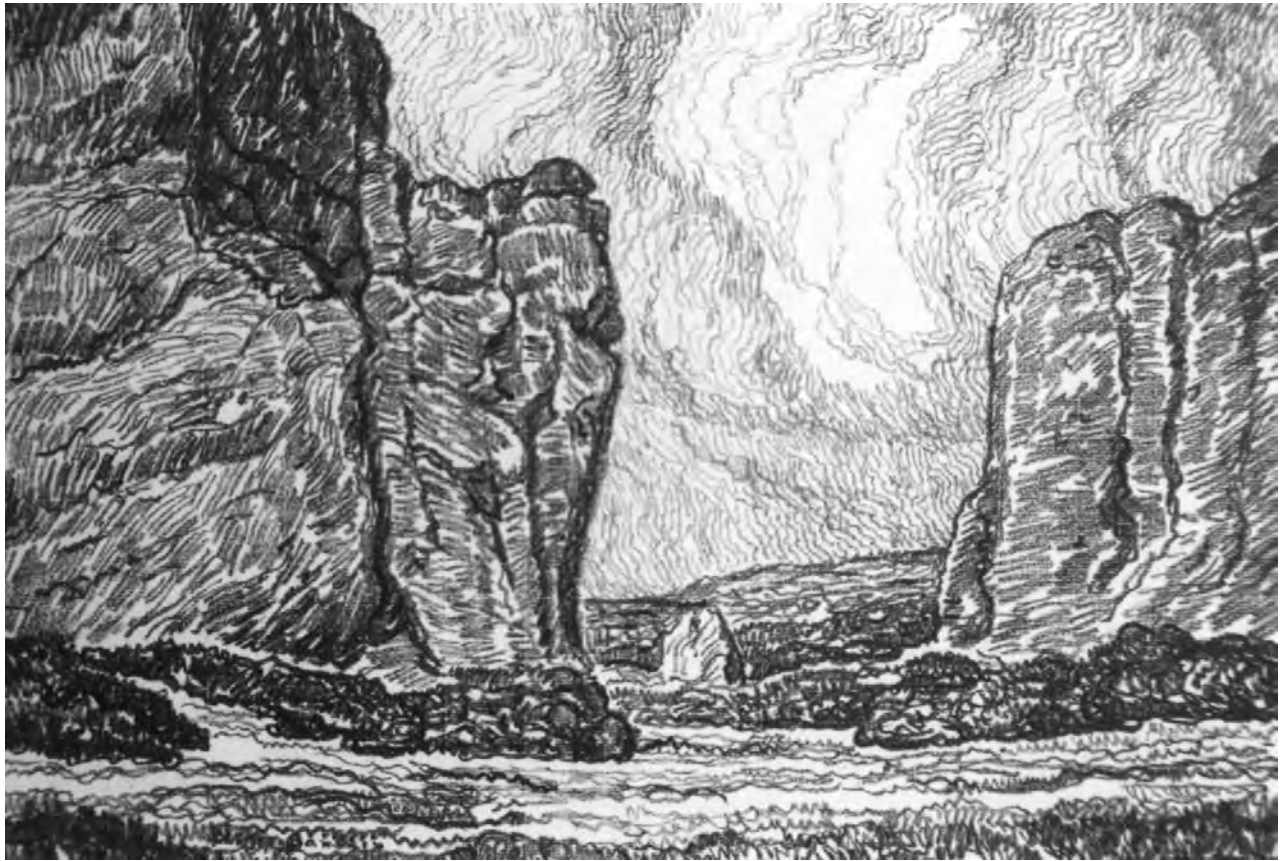
Printer:

Reproduction:

Exhibitions:

Collections:

Notes: From the Garden of the Gods, Colorado. Sent to the Dept. of Fine Arts in France as a gift from the State of Kansas in 1919.



L - 36

The Gateway

Date: 1919

Medium: lithograph on paper

Image Size: 11.875 x 17.875 inches, signature in stone "Birger Sandzén" in lower left.

Edition: 50 impressions

Printer:

Reproduction:

Exhibitions:

Collections:

Notes: From the Garden of the Gods, Colorado



L - 37

Lone Pine

Date: 1919

Medium: lithograph on paper

Image Size: 11.75 x 17.5 inches, signature in stone "Birger Sandzén" in lower right.

Edition: 50 impressions

Printer:

Reproduction:

Exhibitions:

Collections:

Notes: From Mount Manitou, Colorado. Sent to the Dept. of Fine Arts in France as a gift from the State of Kansas in 1919.



L - 38

The Edge of the Forest

Date: 1919

Medium: lithograph on paper

Image Size: 10 x 7 inches, signature in stone "B. S." in lower right.

Edition: 50 impressions

Printer:

Reproduction:

Exhibitions:

Collections:

Notes: Motif from Rocky Mountain National Park, Colorado



L - 39

Valley in the Mountains

Date: 1919

Medium: lithograph on paper

Image Size: 9.875 x 7 inches, signature in stone "B.S." in lower left.

Edition: 50 impressions

Printer:

Reproduction:

Exhibitions:

Collections: NAMA

Notes: Motif from Rocky Mountain National Park, Colorado



L - 40

Horses in a Hilly Pasture

Date: 1919

Medium: lithograph on paper

Image Size: 15.75 x 21.5 inches, signature in stone "Birger Sandzén 1919" in lower left.

Edition: 50 impressions

Printer:

Reproduction:

Exhibitions: BM, MNM, GKM

Collections:

Notes: Motif from a pasture north of Lindsborg. "Illustrated in ""Graphic Works"". Bronze Medal, Sesquicentennial Exposition, Philadelphia, 1926. Selling price of print in 1930 was \$25. Sandzén wrote in 1930 that this print was ""practically sold out"" to Evelyn Sheetz Harms."



L - 41

San Miguel Church

Date: 1919

Medium: lithograph on paper

Image Size: 19.75 x 14.75 inches, signature in stone "Birger Sandzén 1919" in lower right.

Edition: 50 impressions

Printer:

Reproduction:

Exhibitions:

Collections: NM, MNM, GKM

Notes: Motif from San Miguel Church in Santa Fe, New Mexico.



L - 42

The Great Red Rock

Alternative Titles: *Red Rock*

The Great Stone Wall

(owned by Mrs. V. Moote - appraisal 4/ 2003)

Date: 1919

Medium: lithograph on paper

Image Size: 20.75 x 15.875 inches, signature in stone "Birger Sandzén 1919" in lower left.

Edition: 50 impressions

Printer:

Reproduction:

Exhibitions:

Collections: NM, MNM, GKM

Notes: Motif from the Garden of the Gods in Colorado.



L - 43

Gran Quivira

Date: 1919

Medium: lithograph on paper

Image Size: 16 x 21.75 inches, signature in stone "Birger Sandzén 1919" in lower left.

Edition: 50 impressions

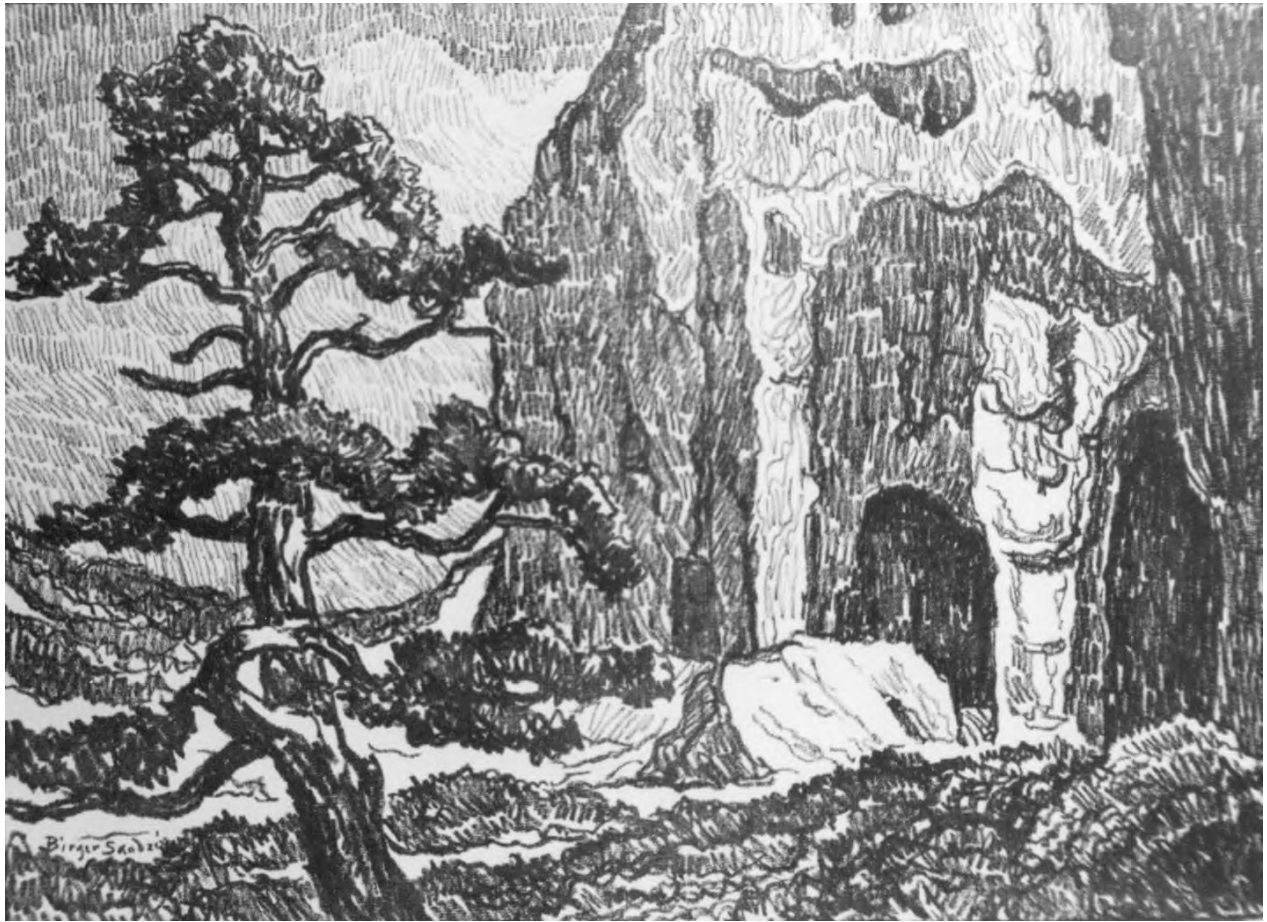
Printer:

Reproduction:

Exhibitions:

Collections: NM, MNM

Notes: Motif from the Gran Quivira ruins in New Mexico.



L - 44

Cliff Dwellings in Frijoles Canyon

Date: 1920

Medium: lithograph on paper

Image Size: 16 x 22 inches, signature in stone "Birger Sandzén" in lower left.

Edition: 50 impressions

Printer:

Reproduction:

Exhibitions:

Collections: NM, MNM, PMA

Notes: Motif from New Mexico.



L - 45

Willow

Date: 1920

Medium: lithograph on paper

Image Size: 8.5 x 10.875 inches, signature in stone "B. S-n" in lower right.

Edition: 50 impressions

Printer:

Reproduction:

Exhibitions:

Collections:

Notes: Motif from a pasture close to Lindsborg



L - 46

Cedars Old Cedars

Date: 1920

Medium: lithograph on paper

Image Size: 8.5 x 10.875 inches, signature in stone "Birger Sandzén" in lower right.

Edition: 50 impressions

Printer:

Reproduction:

Exhibitions:

Collections:

Notes: Motif from New Mexico "Also known as ""Old Cedars"""



L - 47

Elms

Date: 1920

Medium: lithograph on paper

Image Size: 11.875 x 17.875 inches, signature in stone "Birger Sandzén" in lower left.

Edition: 50 impressions

Printer:

Reproduction:

Exhibitions:

Collections: NYPL, University of Michigan

Notes: Motif from area close to Kansas City, Missouri.



L – 48

Study of a Camel

Date: 1920

Medium: lithograph on paper

Image Size: 21.25 x 15.875 inches, signature in stone “Birger Sandzén” in lower right.

Edition: 50 impressions

Printer:

Reproduction:

Exhibitions:

Collections: LC, NM

Notes: Motif from the Zoo at Swope Park in Kansas City, Missouri. Selling price of print in 1930 was \$15.



L - 49

Hilltop

Date: 1920

Medium: lithograph on paper

Image Size: 14 x 19.875 inches, signature in stone "Birger Sandzén" in lower left.

Edition: 50 impressions

Printer:

Reproduction:

Exhibitions:

Collections: DtPL, LC, NM

Notes: Motif from Salemsborg Hills, 6 miles north of Lindsborg.



L - 50

Trees and Hills

Alternative Titles: *Hills and Trees*

Tree and Hills

Rocks

Date: 1920

Medium: lithograph on paper

Image Size: 11.875 x 17.875 inches, signature in stone "Birger Sandzén" in left of lower center.

Edition: 50 impressions

Printer:

Reproduction:

Exhibitions:

Collections:

Notes: Motif from the north slope of Coronado Heights, Lindsborg.



L - 51

The Old Homestead

Alternative Title: *Old Farmhouse*

Date: 1920

Medium: lithograph on paper

Image Size: 14 x 19.75 inches, signature in stone "Birger Sandzén" in lower right.

Edition: 50 impressions

Printer:

Reproduction:

Exhibitions:

Collections: LC, NYPL, GKM

Notes: Motif from Magnus Carlson's homestead, northwest of Lindsborg.



L - 52

Pawnee Creek

Date: 1920

Medium: lithograph on paper

Image Size: 11.875 x 17.75 inches, signature in stone "Birger Sandzén" in lower right.

Edition: 50 impressions

Printer:

Reproduction:

Exhibitions: LC

Collections:

Notes: Motif from near Larned, Kansas



L - 53

Abandoned Farmhouse

Alternative Title: *Old Farm*

Date: 1920

Medium: lithograph on paper

Image Size: 8.375 x 10.875 inches, signature in stone "Burger S." in lower center.

Edition: 50 impressions

Printer:

Reproduction:

Exhibitions:

Collections: LC, NAMA

Notes: Motif from northwest of Lindsborg



L – 54

In the Black Canyon

Date: 1921

Medium: lithograph on paper

Image Size: 12 x 18 inches, signature in stone “Birger Sandzén 1921” in lower left of center.

Edition: 50 impressions

Printer:

Reproduction:

Exhibitions:

Collections: BM, NM

Notes: Motif from Manitou, Colorado



L - 55

Riverbank

Date: 1921

Medium: lithograph on paper

Image Size: 8.5 x 11 inches, signature in stone "Birger Sandzén in lower left.

Edition: 50 impressions

Printer:

Reproduction:

Exhibitions:

Collections:

Notes:



L - 56

Little Arkansas River

Date: 1921

Medium: lithograph on paper

Image Size: 12 x 17.875 inches, signature in stone "Birger Sandzén 1921" in lower left.

Edition: 50 impressions

Printer:

Reproduction:

Exhibitions:

Collections: NYPL

Notes: Motif from Wichita, Kansas. "Reproduced in ""American Graphic Art"" by F. Weitenkampf"



L - 57

Creek with Trees

Date: 1921

Medium: lithograph on paper

Image Size: 12 x 18 inches, signature in stone "Birger Sandzén 1921" in lower right

Edition: 50 impressions

Printer:

Reproduction:

Exhibitions:

Collections:

Notes: Motif from Pawnee Creek, Kansas (near Larned?)



L - 58

Home of a Pioneer

Date: 1921

Medium: lithograph on paper

Image Size: 12 x 18 inches, signature in stone "B. S." in lower left

Edition: 50 impressions

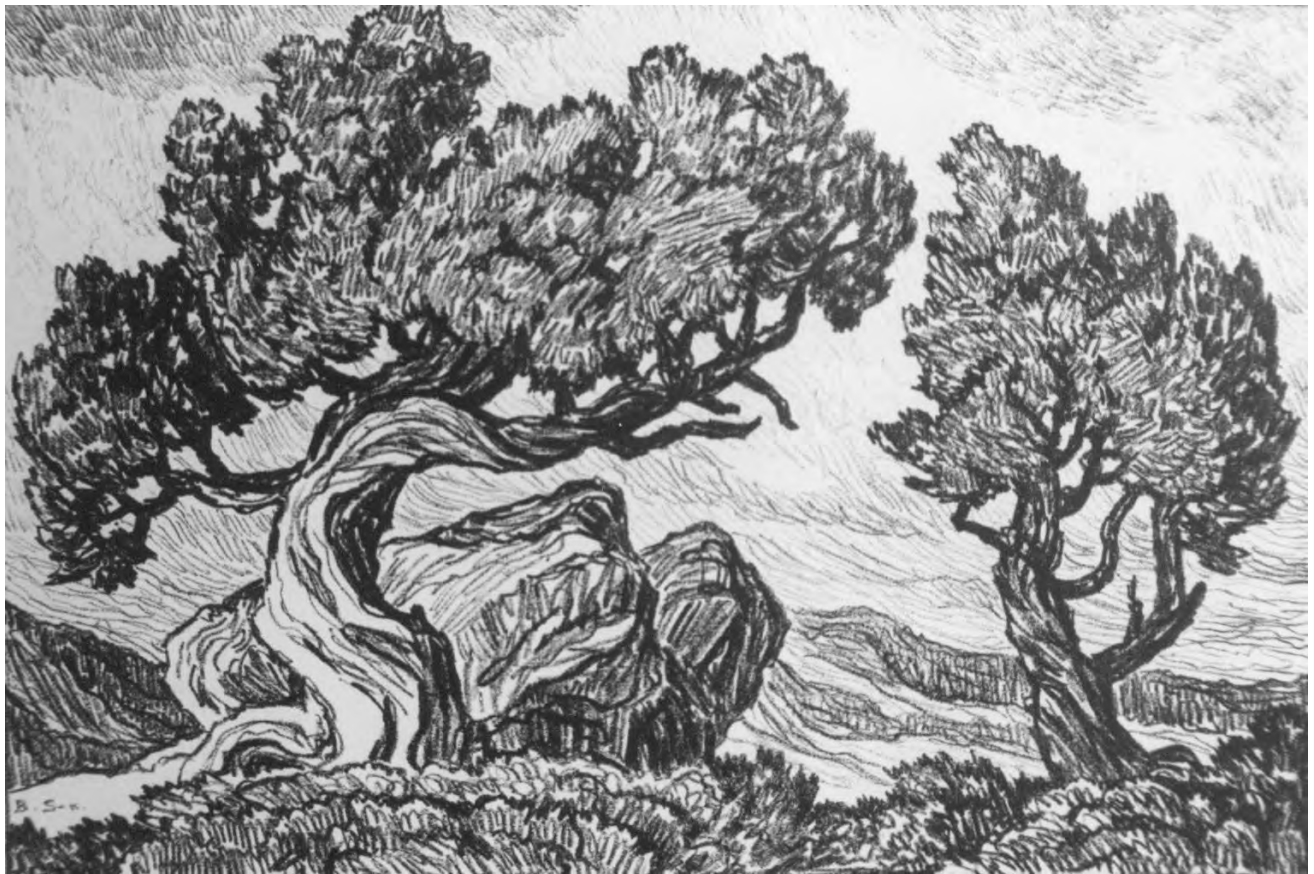
Printer:

Reproduction:

Exhibitions:

Collections: NM

Notes: Motif from five miles northwest of Lindsborg "Illustrated in ""Graphic Works""."



L – 59

Two Cedars

Date: 1921

Medium: lithograph on paper

Image Size: 12 x 18 inches, signature in stone “B. S-n 1921” in lower left.

Edition: 50 impressions

Printer:

Reproduction:

Exhibitions:

Collections:

Notes: Motif from near Manitou, Colorado



L - 60

Willows by the Rio Grande

Date: 1921

Medium: lithograph on paper

Image Size: 12 x 17.875 inches, signature in stone "Birger Sandzén" in lower left.

Edition: 50 impressions

Printer:

Reproduction:

Exhibitions:

Collections: NM

Notes: Motif from San Felipe, New Mexico



L - 61

Smoky River

Date: 1921

Medium: lithograph on paper

Image Size: 12 x 18 inches, signature in stone "B. S-n" in lower left.

Edition: 50 impressions

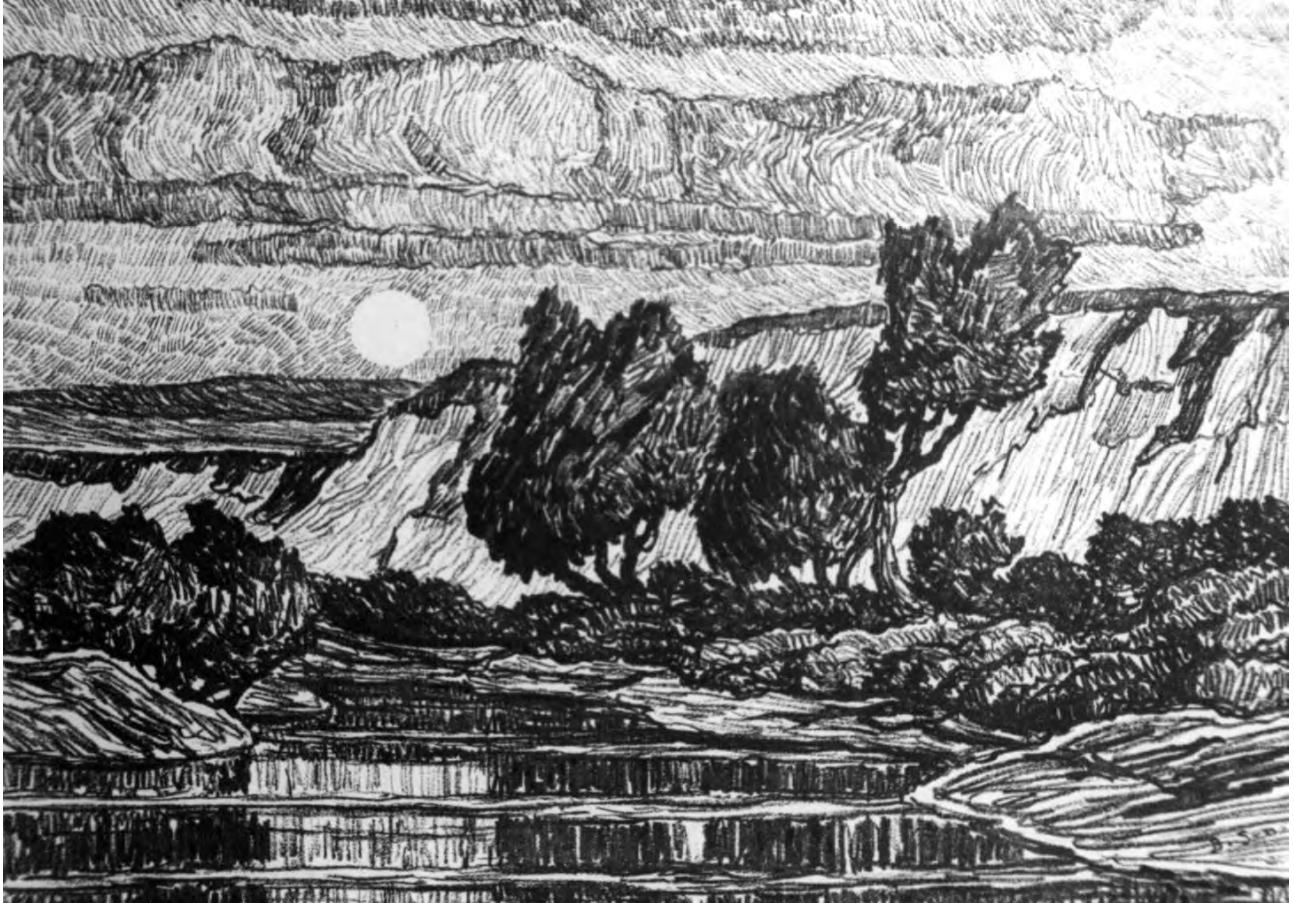
Printer:

Reproduction:

Exhibitions:

Collections:

Notes: Motif from near Lindsborg "Illustrated in ""Graphic Works""."



L - 62

Creek at Moonrise

Date: 1921

Medium: lithograph on paper

Image Size: 14 x 19.625 inches, signature in stone "B. S-n" in lower right.

Edition: 50 impressions

Printer:

Reproduction:

Exhibitions:

Collections: BM, Boston Public Library Print Dept., GKM

Notes: Motif from Wild Horse Creek, Graham County, Kanas



L - 63

Giant Cedars

Date: 1922

Medium: lithograph on paper

Image Size: 21.75 x 16.75 inches, signature in stone "B. S-n" in lower right.

Edition: 50 impressions

Printer:

Reproduction:

Exhibitions:

Collections: BM, NM, American Swedish Historical Museum, Philadelphia; Graphic Arts Div. of Smithsonian; Univ. of Michigan, GKM

Notes: Motif from Garden of the Gods. "Illustrated in ""Graphic Works""."



L - 64

Pine and Juniper

Date: 1922

Medium: lithograph on paper

Image Size: 14 x 19.625 inches, signature in stone "B. S-n" in lower right.

Edition: 50 impressions

Printer:

Reproduction:

Exhibitions:

Collections:

Notes: Motif from Manitou, Colorado



L - 65

Pines and Foothills

Date: 1922

Medium: lithograph on paper

Image Size: 7 x 10 inches, signature in stone "B. S-n" in lower right.

Edition: 51 impressions

Printer:

Reproduction:

Exhibitions:

Collections:

Notes: Motif from the outskirts of Garden of the Gods near Colorado Springs, Colorado.



L - 66

Cedars in the Foothills

Date: 1922

Medium: lithograph on paper

Image Size: 12 x 18 inches, signature in stone "B. S." in lower right

Edition: 50 impressions

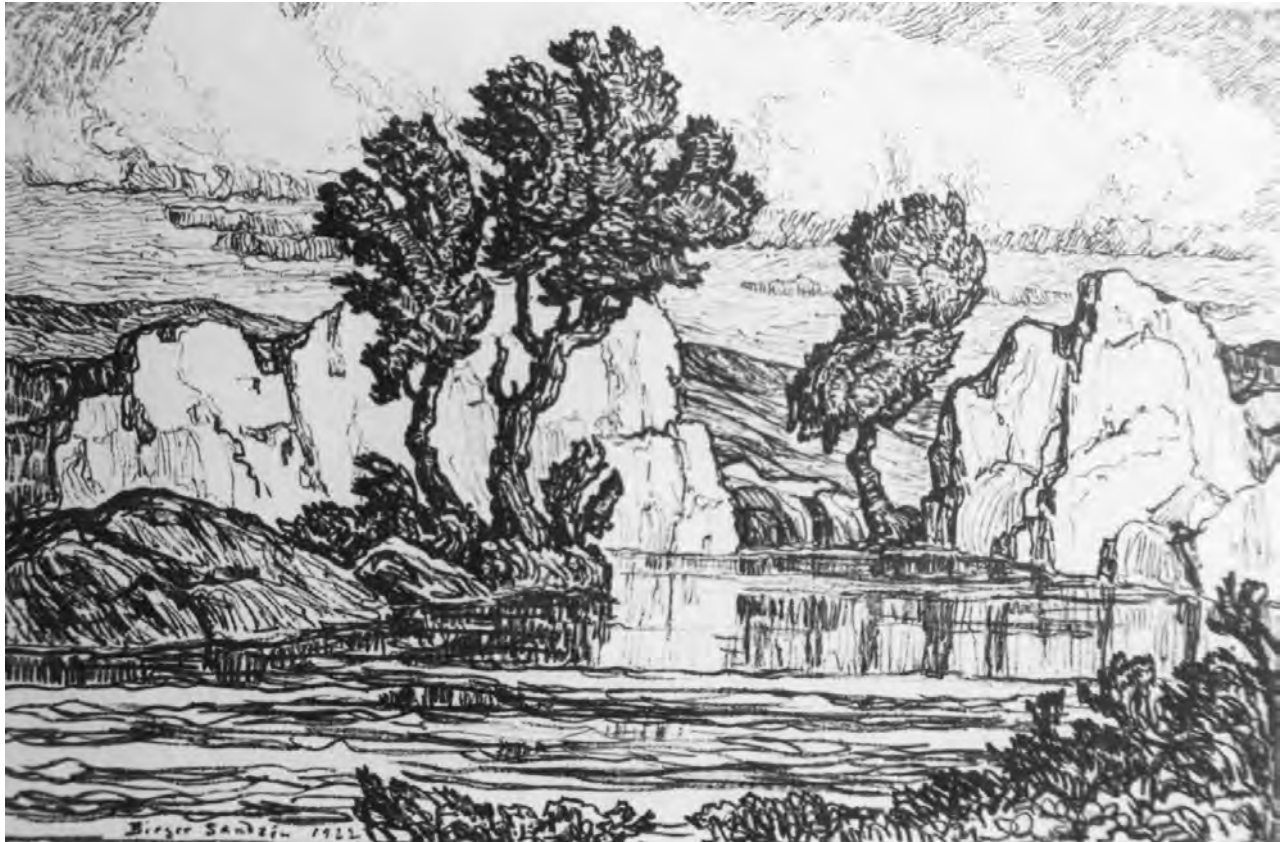
Printer:

Reproduction:

Exhibitions:

Collections:

Notes: Motif from the outskirts of Garden of the Gods near Colorado Springs, Colorado.



L - 67

Wild Horse Creek

Date: 1922

Medium: lithograph on paper

Image Size: 12 x 18 inches, signature in stone "Birger Sandzén 1922" in lower left.

Edition: 50 impressions

Printer:

Reproduction:

Exhibitions:

Collections: SMA

Notes: Motif from Wild Horse Creek, Graham County, Kansas.



L - 68

Portrait Study

Alternative Title: *A Pioneer*
Gustaf Sjogren

Date: 1922

Medium: lithograph on paper

Image Size: 17 x 15.5 inches, signature in stone "Birger Sandzén 1922" in lower left.

Edition: 50 impressions

Printer:

Reproduction:

Exhibitions:

Collections: NM, Boston Public Library Print Dept., GKM

Notes: "Portrait of Gustaf Sjogren, "an old farmer in Lindsborg"" "Illustrated in ""Graphic Works"" Selling price of print in 1930 was \$15."



L - 69

Olof Olson's Homestead

Alternative Title: *Home of a Pioneer*

Date: 1922

Medium: lithograph on paper

Image Size: 14.875 x 19.875 inches, signature in stone "Birger Sandzén" in lower right.

Edition: 50 impressions

Printer:

Reproduction:

Exhibitions:

Collections: NM

Notes: Motif from homestead located three miles northwest of Lindsborg. "Illustrated in ""Graphic Works"". Small Facsimile Reproduction of this measuring approx. 5 x 7 in."



L - 70

Willows by the Smoky River

Date: 1922

Medium: lithograph on paper

Image Size: 7 x 10 inches, signature in stone "Birger Sandzén" in lower right.

Edition: 50 impressions

Printer:

Reproduction:

Exhibitions:

Collections:

Notes: Motif from south of Lindsborg.



L - 71

Summer

Date: 1922

Medium: lithograph on paper

Image Size: 7 x 10 inches, signature in stone "Birger Sandzén" in lower left.

Edition: 50 impressions

Printer:

Reproduction:

Exhibitions:

Collections: NAMA

Notes: Study of the Smoky River. "Illustrated in ""Graphic Works"""



L - 72

Cedar and Sentinel Rock

Date: 1922

Medium: lithograph on paper

Image Size: 17.875 x 13.875 inches, signature in stone "Birger Sandzén" in lower left.

Edition: 50 impressions

Printer:

Reproduction:

Exhibitions:

Collections:

Notes: Motif from Garden of the Gods near Colorado Springs, Colorado.



L - 73

Pond with Cottonwood Trees

Date: 1922

Medium: lithograph on paper

Image Size: 17.875 x 14 inches, signature in stone "B. S-n" in lower left.

Edition: 50 impressions

Printer:

Reproduction:

Exhibitions: The Brooklyn Museum, FJJMA

Collections:

Notes: Motif from northwest of Lindsborg. "Illustrated in ""Graphic Works"". Small facsimile reproduction of this that measures approx. 7 x 5.5 in."



L - 74

The Cathedral

Alternative Title: *The Great Cathedral*

Date: 1922

Medium: lithograph on paper

Image Size: 22 x 16.875 inches, signature in stone "Birger Sandzén" in lower right.

Edition: 50 impressions

Printer:

Reproduction:

Exhibitions:

Collections: NM, GKM

Notes: Motif from Garden of the Gods near Colorado Springs, Colorado.



L - 75

Rocky Shore

Date: 1923

Medium: lithograph on paper

Image Size: 15 x 12 inches, signature in stone "Birger Sandzén" in lower left.

Edition: 100 impressions

Printer:

Reproduction:

Exhibitions:

Collections: NM, American Swedish Historical Museum, Philadelphia

Notes: From Lake Wellington, Colorado (approx. 12 miles south of Bailey, Colorado).



L - 76

Moonrise in the Foothills

Date: 1923

Medium: lithograph on paper

Image Size: 7 x 9.875 inches, no apparent signature.

Edition: 100 impressions

Printer:

Reproduction:

Exhibitions: NM

Collections:

Notes: Motif from Manitou, Colorado. Selling price of print in 1930 was \$6



L - 77

Pines at Sunset

Date: 1923

Medium: lithograph on paper

Image Size: 7 x 10 inches, no apparent signature – possibly in lower left of image.

Edition: 100 impressions

Printer:

Reproduction:

Exhibitions:

Collections: NM, NAMA

Notes: Motif from Manitou, Colorado



L - 78

Creek with Sandstone Banks

Date: 1923

Medium: lithograph on paper

Image Size: 9 x 12 inches, signature in stone "Birger Sandzén 1923" in lower left.

Edition: 100 impressions

Printer:

Reproduction:

Exhibitions:

Collections: NM

Notes: Motif from Wild Horse Creek, Graham County, Kansas



L - 79

The Bend of the River

Date: 1923

Medium: lithograph on paper

Image Size: 8.875 x 11.875 inches, signature in stone "Birger Sandzén" in lower left of center.

Edition: 100 impressions

Printer:

Reproduction:

Exhibitions:

Collections: NM

Notes: Study of the Smoky River



L - 80

Pool with Trees

Date: 1923

Medium: lithograph on paper

Image Size: 9 x 12 inches, signature in stone "B. S-n" in lower left of center.

Edition: 100 impressions

Printer:

Reproduction:

Exhibitions:

Collections:

Notes: Motif close to Lindsborg



L - 81

Early Summer

Date: 1923

Medium: lithograph on paper

Image Size: 7 x 10 inches, signature in stone "Birger Sandzén" in lower right.

Edition: 100 impressions

Printer:

Reproduction:

Exhibitions:

Collections:

Notes: Motif from the Smoky River



L - 82

Mendenhall

Date: 1923

Medium: lithograph on paper

Image Size: 14.875 x 20 inches, signature in stone "Birger Sandzen" in lower right.

Edition: 100 impressions

Printer:

Reproduction:

Exhibitions:

Collections:

Notes: The home of Mr. and Mrs. C. F. Calkins, Ponca City, Oklahoma. "Edition privately owned by C. F. Calkins. Sandzén wrote that the ""entire edition with the exception of 10 proofs (changed to 13 by Pelham) belongs to Mr. and Mrs. Calkins.""



L - 83

Three Cedars

Date: 1923

Medium: lithograph on paper

Image Size: 16.75 x 21.75 inches, signature in stone "Birger Sandzén 1923" in lower right of center.

Edition: 100 impressions

Printer:

Reproduction:

Exhibitions:

Collections: NM

Notes: Motif from the Garden of the Gods near Colorado Springs, Colorado. "Illustrated in ""Graphic Works"""



L - 84

The Last of the Scouts

Date: 1923

Medium: lithograph on paper

Image Size: 14 x 12.5 inches, signature in stone "Birger Sandzén 1923" in lower right.

Edition: 100 impressions

Printer:

Reproduction:

Exhibitions:

Collections: BM, NM, American Swedish Historical Museum, Philadelphia

Notes: "Sandzén described him as an ""interesting type. . .half French, half Indian. Posed at Red Crags, Manitou, Colorado."" ""Illustrated in ""Graphic Works"""



L - 85

Pine and Aspen

Date: 1923

Medium: lithograph on paper

Image Size: 14.75 x 11.75 inches, signature in stone "B. S." in lower right.

Edition: 100 impressions

Printer:

Reproduction:

Exhibitions:

Collections: FJMA

Notes: Motif from Cheyenne Mountain in Colorado (near Colorado Springs). Selling price of print in 1930 was \$10



L - 86

Arroyo in the Foothills

Date: 1923

Medium: lithograph on paper

Image Size: 11.875 x 18 inches, signature in stone "Birger Sandzén" in lower right.

Edition: 100 impressions

Printer:

Reproduction:

Exhibitions:

Collections: NM, FJMA

Notes: Motif from close to Pueblo, Colorado



L - 87

The Red Cathedral

Date: 1923

Medium: lithograph on paper

Image Size: 15 x 12 inches, signature in stone "Birger Sandzén" in lower left.

Edition: 100 impressions

Printer:

Reproduction:

Exhibitions:

Collections: NM

Notes: Motif from the Garden of the Gods near Colorado Springs, Colorado.



L - 88

The Friendly Stream

Date: 1923

Medium: lithograph on paper

Image Size: 7 x 10 inches, signature in stone "Birger Sandzén" in lower right.

Edition: 100 impressions

Printer:

Reproduction:

Exhibitions:

Collections: NM

Notes: Motif from the Smoky River near Bridgeport, Kansas.



L - 89

Pond with Poplars

Date: 1923

Medium: lithograph on paper

Image Size: 10 x 7 inches, signature in stone "Birger Sandzén in lower left.

Edition: 100 impressions

Printer:

Reproduction:

Exhibitions:

Collections:

Notes: Motif from Colorado Springs, Colorado



L - 90

Trees at the Timberline

Date: 1923

Medium: lithograph on paper

Image Size: 7.875 x 11.875 inches, signature in stone "B. S-n" in lower right.

Edition: 100 impressions

Printer: Printer by Western Lithograph Company, Wichita, Kansas.

Reproduction:

Exhibitions:

Collections: American Swedish Historical Museum, Philadelphia.

Notes: Motif from the timberline of Pike's Peak in Colorado. Selling price of print in 1930 was \$7. Print was printed by Western Lithograph Co. in Wichita, Kansas.



L - 91

Stream with Willows

Date: 1923

Medium: lithograph on paper

Image Size: 7.875 x 11.875 inches, signature in stone "B. S-n" in lower right.

Edition: 100 impressions

Printer: Printed by Western Lithograph Company, Wichita, Kansas.

Reproduction:

Exhibitions:

Collections: American Swedish Historical Museum, Philadelphia.

Notes: Motif from the Smoky Hill River.



L - 92

Granite Banks

Date: 1923

Medium: lithograph on paper

Image Size: 14.875 x 19.75 inches, unsigned in the image.

Edition: 100 impressions

Printer: Printed by Western Lithograph Company, Wichita, Kansas.

Reproduction:

Exhibitions:

Collections: BM, NM, Philadelphia Museum of Art.

Notes: Motif from Carroll Lake in Colorado "Illustrated in ""Graphic Works""



L - 93

Birches

Date: 1924

Medium: lithograph on paper

Image Size: 12.5 x 15 inches, signature in stone "B. S-n" in lower right.

Edition: 100 impressions

Printer:

Reproduction:

Exhibitions:

Collections: Toledo Museum of Art

Notes: "Motif completed ""from an old sketch from the neighborhood of Kristianstad, Skåne, Sweden. Drawing of this print completed in Rackeby, Lidköping, Sweden."""



L - 94

Old Windmill - Rackeby, Sweden

Date: 1924

Medium: lithograph on paper

Image Size: 13.75 x 16.625 inches, signature in stone "B. S-n" in lower right.

Edition: 100 impressions

Printer:

Reproduction:

Exhibitions:

Collections:

Notes: Motif from Kålland, Västergötland.



L – 95

Birch and Pine

Date: 1924

Medium: lithograph on paper

Image Size: 13.75 x 17 inches, signature in stone “B. S-n” in lower left.

Edition: 100 impressions

Printer: Generalstabens Litografiska Anstalt

Reproduction:

Exhibitions:

Collections: BM, American Swedish Historical Museum, Philadelphia; Joslyn Memorial Art Museum, Omaha; University of Michigan, FJMA

Notes: Motif from Rackeby, Lidköping, Sweden. Printed from a zinc plate by Generalstabens Litografiska Anstalt in Stockholm, Sweden.



L – 96

Rocks and Sea

Date: 1924

Medium: lithograph on paper

Image Size: 15 x 19.625 inches, signature in stone “Birger Sandzén Kullen 1924” in lower left.

Edition:

Printer:

Reproduction:

Exhibitions:

Collections: American Swedish Historical Museum, Philadelphia

Notes: Motif from Kullen, Skåne (west coast), Sweden. "Illustrated in ""Graphic Works""
Selling price of print in 1930 was \$15"



L - 97

In the Skerries

Date: 1924

Medium: lithograph on paper

Image Size: 7 x 10 inches, signature in stone "Birger Sandzén 1924" in lower right.

Edition: 100 impressions

Printer:

Reproduction:

Exhibitions:

Collections:

Notes: Motif from Rackeby Skargård, Lake Vänern, Sweden



L - 98

The Little Island

Date: 1924

Medium: lithograph on paper

Image Size: 7 x 10 inches, signature in stone "Birger Sandzén 1924" in lower right.

Edition: 100 impressions

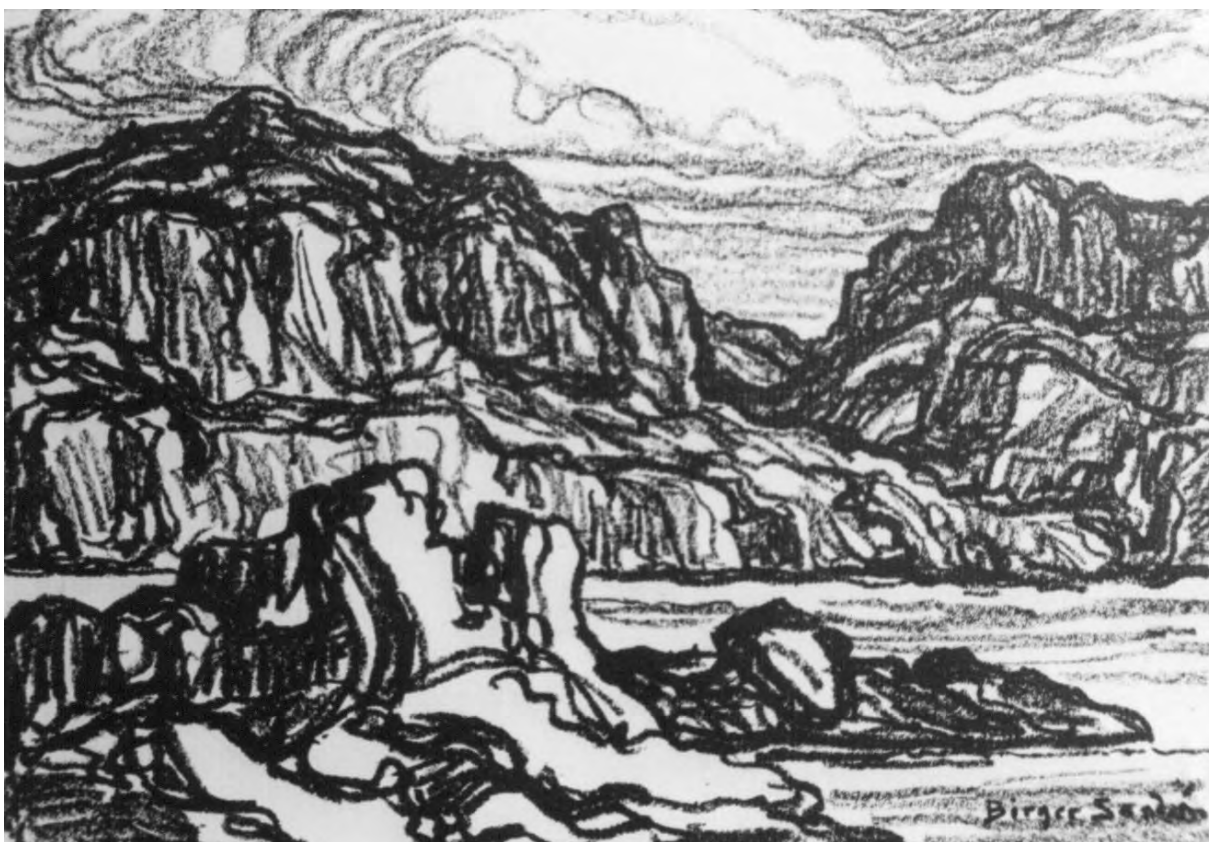
Printer:

Reproduction:

Exhibitions:

Collections: BM

Notes: Motif from Rackeby Skargård, Lake Vänern, Sweden



L - 99

In the Fjord

Date: 1924

Medium: lithograph on paper

Image Size: 7.5 x 10.625 inches, signature in stone "Birger Sandzén" in lower right.

Edition: 100 impressions

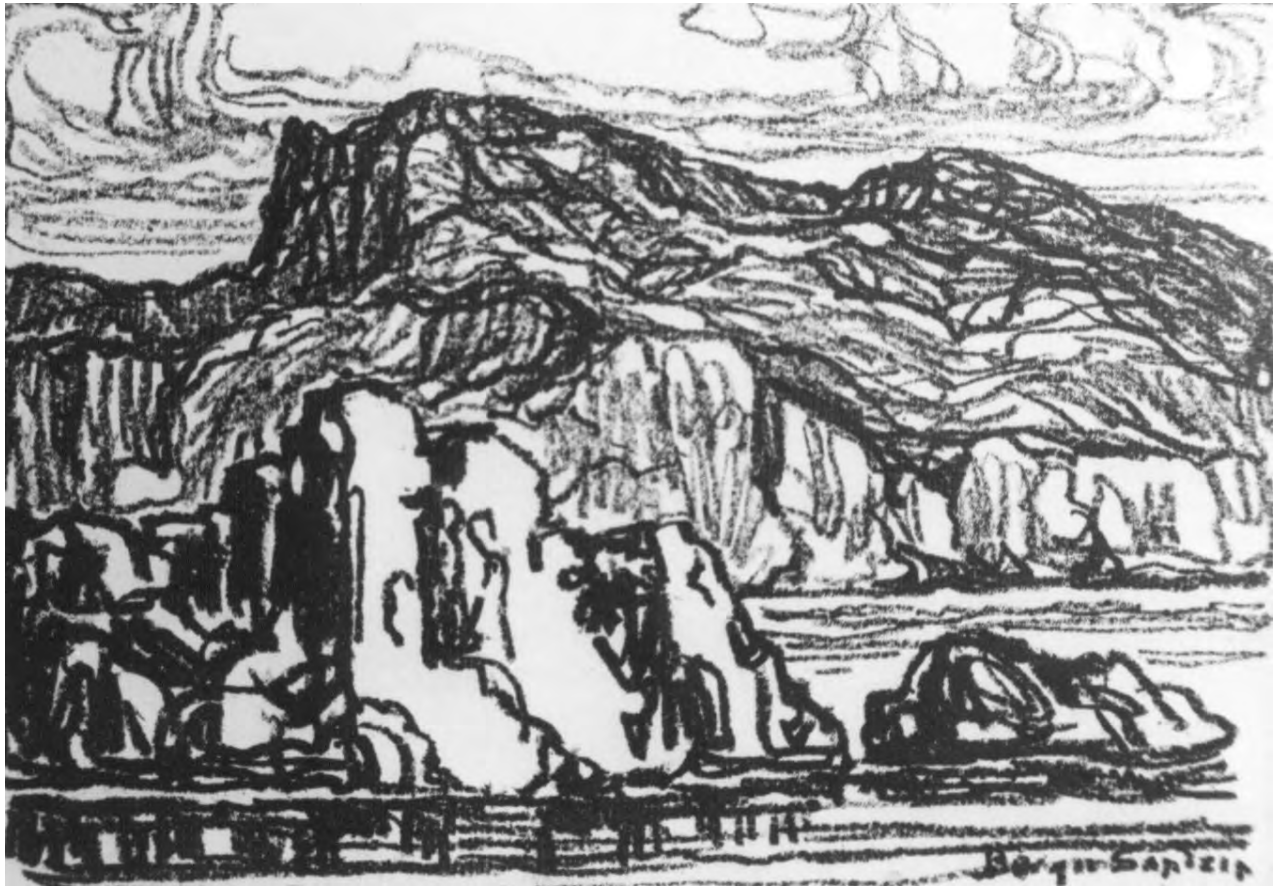
Printer:

Reproduction:

Exhibitions:

Collections: FJJMA

Notes: Motif from Stavanger Fiord (or Fjord), Norway



L - 100

Fjord Motif

Date: 1924

Medium: lithograph on paper

Image Size: 7.75 x 10.5 inches, signature in stone "Birger Sandzén" in lower right.

Edition: 100 impressions

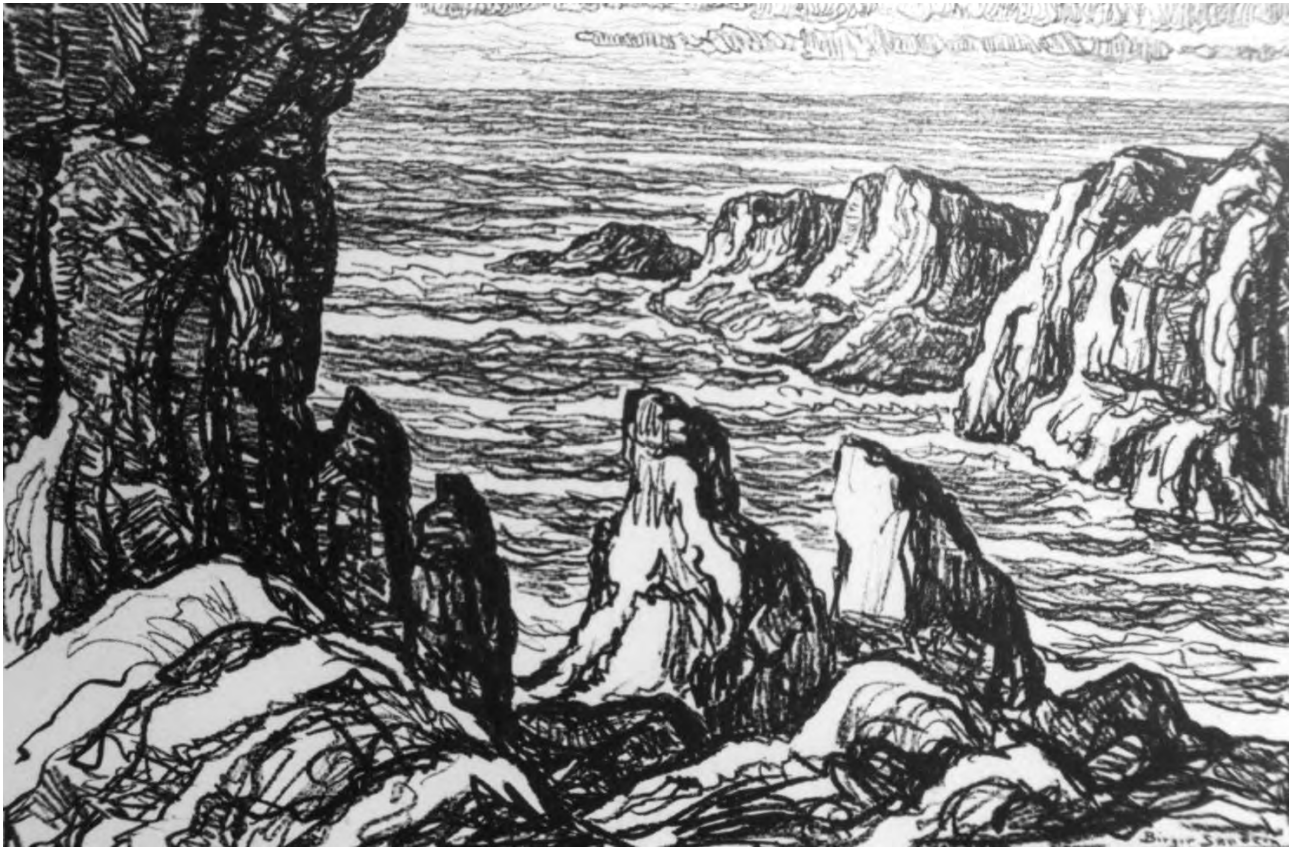
Printer:

Reproduction:

Exhibitions:

Collections:

Notes: Motif from Stavanger Fjord (or Fjord), Norway



L - 101

Rocky Promontory

Date: 1924

Medium: lithograph on paper

Image Size: 12 x 18 inches, signature in stone "Birger Sandzén" in lower right.

Edition: 100 impressions

Printer:

Reproduction:

Exhibitions:

Collections:

Notes: Motif from Kullen, Sweden



L - 102

The Colonnade

Date: 1924

Medium: lithograph on paper

Image Size: 10.5 x 14.5 inches, signature in stone "B. S-n" in lower right of center.

Edition: 100 impressions

Printer: Printed by Western Lithograph Company, Wichita, Kansas.

Reproduction:

Exhibitions:

Collections: BM

Notes: Motif from Palmer Park, Colorado - located 3 miles from Colorado Springs, Colorado. Printed from the stone by Western Lithograph Company, Wichita, Kansas.



L - 103

Pond at Moonrise

Date: 1924

Medium: lithograph on paper

Image Size: 11.875 x 18 inches, signature in stone "Birger Sandzén" in lower right.

Edition: 100 impressions

Printer:

Reproduction:

Exhibitions:

Collections:

Notes: "Motif from ""Berquist's Pond"", northwest of Lindsborg."



L - 104

Lake at Sunset

Date: 1925

Medium: lithograph on paper

Image Size: 7 x 10 inches, signature in stone "B. S-n" in lower right.

Edition: 100 impressions

Printer:

Reproduction:

Exhibitions:

Collections:

Notes: Motif from Lake Vänern, Sweden. Selling price of print in 1930 was \$6



L - 105

Arroyo with Trees

Date: 1925

Medium: lithograph on paper

Image Size: 12 x 18 inches, signature in stone "Birger Sandzén 1925" in lower right.

Edition: 100 impressions

Printer:

Reproduction:

Exhibitions:

Collections: Purdue University; Santa Barbara College

Notes: Motif from close to Pueblo, Colorado.



L – 106

Timberline Snow

Alternative Title: *Snow at the Timberline*

Date: 1925

Medium: lithograph on paper

Image Size: 9.875 x 13.75 inches, signature in stone “Birger Sandzén” in lower right.

Edition: 100 impressions

Printer:

Reproduction:

Exhibitions:

Collections:

Notes: Motif from Pike's Peak, Colorado.



L - 107

Smiling Water

Date: 1925

Medium: lithograph on paper

Image Size: 9.875 x 13.75 inches, signature in stone “Birger Sandzén” in lower right.

Edition: 100 impressions

Printer:

Reproduction:

Exhibitions:

Collections:

Notes: Motif from the Smoky Hill River.



L - 108

Gypsum Creek

Date: 1925

Medium: lithograph on paper

Image Size: 6 x 8.875 inches, signature in stone "Birger Sandzén" in lower left.

Edition: 100 impressions

Printer: Printed from a zinc plate by Western Lithograph Company, Wichita, Kansas.

Reproduction:

Exhibitions:

Collections:

Notes: Motif from Gypsum Creek located southwest(east?) of Lindsborg.



L - 109

Old Willow

Date: 1925

Medium: lithograph on paper

Image Size: 5.875 x 8.875 inches, signature in stone "Birger Sandzén" in lower left of center.

Edition: 100 impressions

Printer: Printed from a zinc plate by Western Lithograph Company, Wichita, Kansas.

Reproduction:

Exhibitions:

Collections:

Notes: Motif from a pasture northwest of Lindsborg.



L - 110

Mountain Slope

Date: 1925

Medium: lithograph on paper

Image Size: 6 x 8.875 inches, signature in stone "Birger Sandzén 1925" in lower left.

Edition: 100 impressions

Printer: Printed from a zinc plate by Western Lithograph Company, Wichita, Kansas.

Reproduction:

Exhibitions:

Collections:

Notes: Motif from Estes Park, Colorado.



L - 111

Pines by the Arroyo

Date: 1925

Medium: lithograph on paper

Image Size: 7.875 x 5.875 inches, signature in stone "Birger Sandzén 1925" in lower left.

Edition: 100 impressions

Printer: Printed from a zinc plate by Western Lithograph Company, Wichita, Kansas.

Reproduction:

Exhibitions:

Collections:

Notes: Motif from Pueblo, Colorado "Drawn on Zinc for the Deluxe edition of ""In the Mountains"" - published by Carl Smalley of McPherson, Kansas. 125 printed"



L - 112

Dream Lake

Date: 1925

Medium: lithograph on paper

Image Size: 21.875 x 16.75 inches, signature in stone "Birger Sandzén 1925" in lower right.

Edition: 100 impressions

Printer:

Reproduction:

Exhibitions:

Collections: FJJMA

Notes: Motif from Rocky Mountain National Park, Colorado. Bronze Medal, Sesquicentennial Exposition, Philadelphia, 1926. Selling price of print in 1930 was \$15.



L - 113

Blue River

Date: 1926

Medium: lithograph on paper

Image Size: 9.75 x 13.75 inches, signature in stone "Birger Sandzén 1926" in lower left of center.

Edition: 100 impressions

Printer:

Reproduction:

Exhibitions:

Collections:

Notes: Motif from Cleburne, Kansas (original townsite is located under the north end of Tuttle Creek Lake - northeast of Randolph)



L - 114

Moonrise on the Blue River

Date: 1926

Medium: lithograph on paper

Image Size: 9.75 x 13.875 inches, signature in stone "Birger Sandzén 1926" in lower left.

Edition: 150 impressions

Printer:

Reproduction:

Exhibitions:

Collections:

Notes: Motif from Cleburne, Kansas (original townsite is located under the north end of Tuttle Creek Lake - northeast of Randolph) Reproduced in 50 printed in 1927.



L - 115

Hidden Lake

Date: 1927

Medium: lithograph on paper

Image Size: 12 x 18 inches, signature in stone "Birger Sandzén 1927" in lower right.

Edition: 100 impressions

Printer:

Reproduction:

Exhibitions:

Collections:

Notes: Motif from Rocky Mountain National Park, Colorado. Selling price of print in 1930 was \$10



L - 116

Magnus Carlson's Homestead

Date: 1927

Medium: lithograph on paper

Image Size: 10 x 14 inches, signature in stone "Birger Sandzén 1927" in lower left.

Edition: 100 impressions

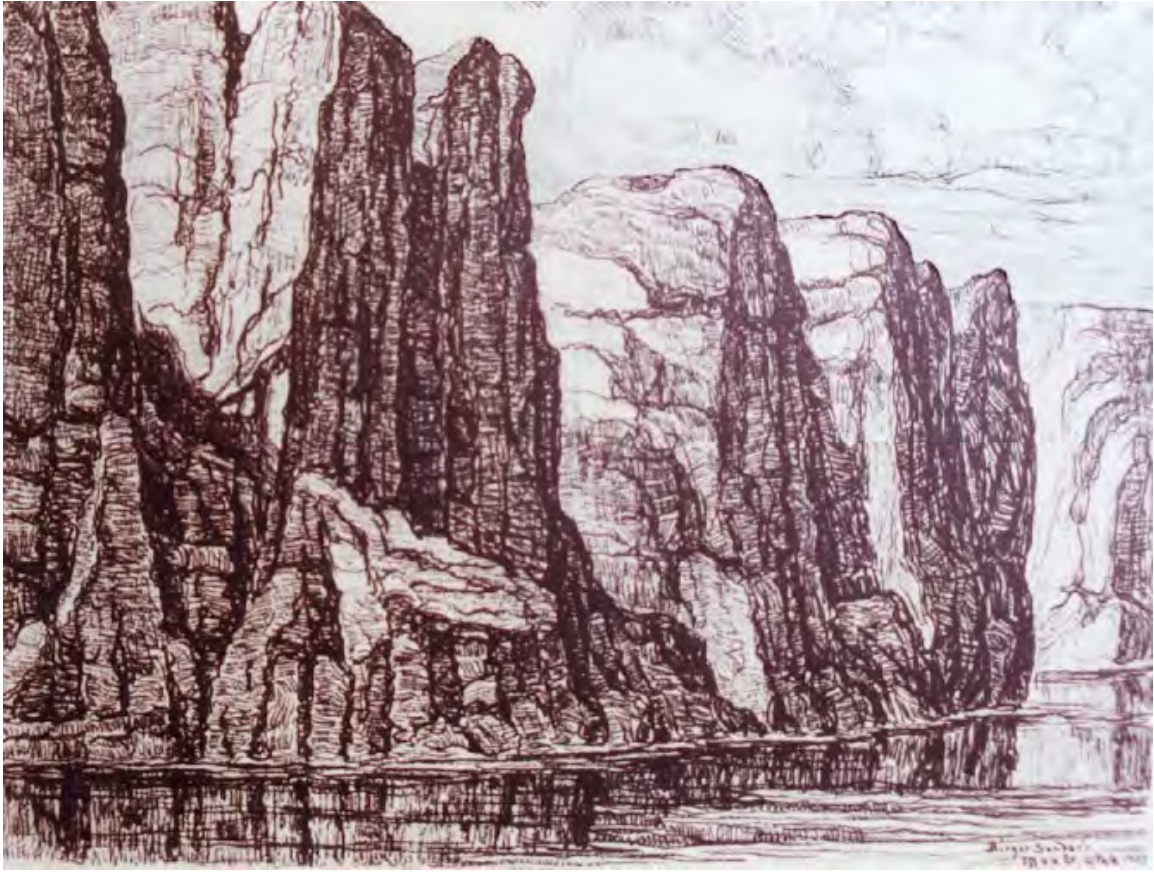
Printer:

Reproduction:

Exhibitions:

Collections:

Notes: Motif from homestead located northwest of Lindsborg.



L - 117

The Red Canyon

Alternative Title: *In the Canyon*
Red Rock Canyon

Date: 1927

Medium: lithograph on paper

Image Size: 17 x 22.25 inches, signature in stone "Birger Sandzén Moab, Utah 1927" in lower right.

Edition: 50 impressions

Printer:

Reproduction:

Exhibitions:

Collections: BM

Notes: Motif from the Grand Canyon of the Colorado River at Moab, Utah. "Illustrated in ""Graphic Works""."



L - 118

Riverbank with Cedars

Date: 1927

Medium: lithograph on paper

Image Size: 10 x 13.875 inches, signature in stone "Birger Sandzén" in lower right.

Edition: 150 impressions

Printer: Printed by Ketterlinus Lithographic Manufacturing Company

Reproduction:

Exhibitions:

Collections:

Notes: Motif from Rochport (Rocheport), Missouri - 18 miles from Columbia, Missouri.
"Additional 50 printed in 1928. Printed by Ketterlinus Lithographic Manufacturing Co. in Philadelphia, PA on November 15, 1927. Letter in ""Sandzen Print info"" file"



L – 119

Flooded Meadow

Date: 1927

Medium: lithograph on paper

Image Size: 10 x 14 inches, signature in stone “Birger Sandzén” in lower left.

Edition: 150 impressions

Printer: Printed by Ketterlinus Lithographic Manufacturing Company

Reproduction:

Exhibitions:

Collections:

Notes: Motif from Lindsborg, Kansas. "Additional 50 printed in 1928. Printed by Ketterlinus Lithographic Manufacturing Co. in Philadelphia, PA on November 15, 1927. Letter in ""Sandzen Print info"" file."



L - 120

The Winding Stream

Date: 1928

Medium: lithograph on paper

Image Size: 9.875 x 14 inches, signature in stone "Birger Sandzén" in lower left.

Edition: 100 impressions

Printer:

Reproduction:

Exhibitions:

Collections: PAM

Notes: Motif from the Smoky River at Bridgport, Kansas



L - 121

Evening Clouds

Date: 1928

Medium: lithograph on paper

Image Size: 10 x 13.875 inches, signature in stone “Birger Sandzén” in lower right.

Edition: 100 impressions

Printer:

Reproduction:

Exhibitions:

Collections:

Notes: Motif from Rocky Mountain National Park, Colorado.



L - 122

Windwhipped Pines

Date: 1928

Medium: lithograph on paper

Image Size: 16 x 22 inches, signature in stone "Birger Sandzén" in lower right.

Edition: 100 impressions

Printer:

Reproduction:

Exhibitions:

Collections: BM

Notes: Motif from Rocky Mountain National Park, Colorado. Selling price of print in 1930 was \$15



L - 122a

Windwhipped Pines

Date: 1928

Medium: lithograph on paper

Image Size: 16.125 x 21.325 inches, signature in stone "Birger Sandzén 1928" in lower right

Edition: 4 impressions

Printer:

Reproduction:

Exhibitions:

Collections:

Notes: All corners are not at right angles.



L - 123

Stream with Cottonwoods

Date: 1929

Medium: lithograph on paper

Image Size: 10 x 14 inches, signature in stone “Birger Sandzén” in lower left.

Edition: 100 impressions

Printer:

Reproduction:

Exhibitions:

Collections: BM

Notes: Motif from the Smoky Hill River in Kansas. Selling price of print in 1930 was \$8.



L - 124

Colorado River

Date: 1929

Medium: lithograph on paper

Image Size: 10 x 14 inches, signature in stone "Birger Sandzén" in lower right.

Edition: 100 impressions

Printer:

Reproduction:

Exhibitions:

Collections: BM, FJMA

Notes: Motif from the beginning of the Grand Canyon near Moab, Utah. Selling price of print in 1930 was \$8.



L – 125

The Guardian Poplar

Date: 1929

Medium: lithograph on paper

Image Size: 7.5 x 10.125 inches, signature in stone “Birger Sandzén” in lower right.

Edition: 100 impressions

Printer:

Reproduction:

Exhibitions:

Collections: BM, American Swedish Historical Museum, Philadelphia.

Notes: Motif from Ogden, Utah. Selling price of print in 1930 was \$6.



L - 126

The Friendly Lake

Date: 1929

Medium: lithograph on paper

Image Size: 7.625 x 10.125 inches, signature in stone "Birger Sandzén" in lower right.

Edition: 100 impressions

Printer:

Reproduction:

Exhibitions:

Collections: BM

Notes: Motif from Bear Lake near Logan, Utah. Selling price of print in 1930 was \$6.



L - 127

The Cottonwood Tree

Date: 1930

Medium: lithograph on paper

Image Size: 10 x 14 inches, signature in stone "Birger Sandzén 1930" in lower right.

Edition: 100 impressions

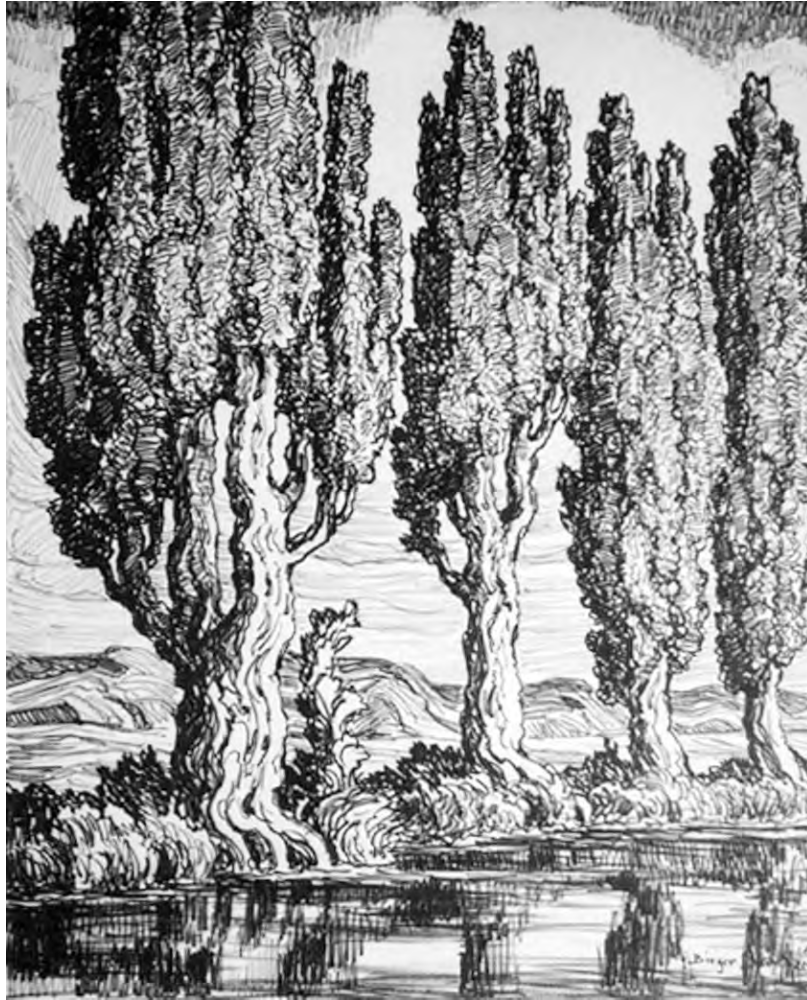
Printer:

Reproduction:

Exhibitions:

Collections:

Notes: Motif from the Smoky River in Kansas. Selling price of print in 1930 was \$8.



L - 128

Utah Poplars

Date: 1930

Medium: lithograph on paper

Image Size: 20 x 16 inches, signature in stone "Birger Sandzén" in lower right.

Edition: 100 impressions

Printer: Printed by Western Lithograph Company, Wichita, Kansas.

Reproduction:

Exhibitions:

Collections:

Notes: "Illustrated in ""Graphic Works"".



L - 129

Hills and Poplars

Date: 1930

Medium: lithograph on paper

Image Size: 9 x 11.875 inches, signature in stone "Birger Sandzén" in lower right.

Edition: 50 impressions

Printer:

Reproduction:

Exhibitions:

Collections:

Notes:



L - 130

Sunflowers

Date: 1930

Medium: lithograph on paper

Image Size: 22 x 17 inches, signature in stone "Birger Sandzén 1930" in lower right.

Edition: 100 impressions

Printer:

Reproduction:

Exhibitions:

Collections: NAMA

Notes: Still-life of sunflowers in a vase. "Illustrated in ""Graphic Works"". Selling price of print in 1930 was \$15."



L - 131

A Kansas Creek

Date: 1931

Medium: lithograph on paper

Image Size: 7 x 10 inches, signature in stone "Birger Sandzén" in lower right.

Edition: 200 impressions

Printer: Printed by Western Lithograph Company in Wichita, Kansas.

Reproduction:

Exhibitions:

Collections: LC

Notes: First Gift Print of the Prairie Print Makers to associate members.



L - 132

Margaret's Creek

Date: 1931

Medium: lithograph on paper

Image Size: 15 x 20 inches, signature in stone "Birger Sandzén" in lower right.

Edition: 100 impressions

Printer:

Reproduction:

Exhibitions:

Collections: American Swedish Historical Museum, Philadelphia

Notes: Motif from the family farm near Bogue in Graham County, Kansas. Selling price of print in 1930 was \$15.



L - 133

The House in the Grove

Date: 1931

Medium: lithograph on paper

Image Size: 8 x 12 inches, signature in stone "Birger Sandzén" in lower right.

Edition: 100 impressions

Printer:

Reproduction:

Exhibitions:

Collections:

Notes:



L - 134

Aspens by the Lake

Date: 1931

Medium: lithograph on paper

Image Size: 10 x 14 inches, signature in stone "Birger Sandzén" in lower right.

Edition: 100 impressions

Printer:

Reproduction:

Exhibitions:

Collections:

Notes: Motif from Bear Lake near Logan, Utah. Selling price of print in 1930 was \$8.



L - 135

The Castle by the Sea

Date: 1931

Medium: lithograph on paper

Image Size: 16 x 20 inches, signature in stone "Birger Sandzén" in lower right.

Edition: 75 impressions

Printer:

Reproduction:

Exhibitions:

Collections:

Notes: ""Front"" view of Läckö Castle in Sweden. see www.lackoslott.se for additional info on the Castle." "Illustrated in ""Graphic Works"" Selling price of print in 1930 was \$15"



L - 136

Lecko Castle

Date: 1931

Medium: lithograph on paper

Image Size: 16 x 20 inches, signature in stone “Birger Sandzén 1931” in lower right.

Edition: 100 impressions

Printer:

Reproduction:

Exhibitions:

Collections:

Notes: Distant image of Läckö Castle in Sweden. see www.lackoslott.se for additional info on the Castle.



L - 137

A Kansas Stream

Date: 1932

Medium: lithograph on paper

Image Size: 10 x 14 inches, signature in stone "B. S-n" in lower right.

Edition: 75 impressions

Printer:

Reproduction:

Exhibitions:

Collections:

Notes:



L - 138

Mountain Aspens

Date: 1932

Medium: lithograph on paper

Image Size: 20 x 16 inches, signature in stone "Birger Sandzén 1932" in lower right.

Edition: 100 impressions

Printer: Printed by Western Lithograph Company, Wichita, Kansas.

Reproduction:

Exhibitions:

Collections: American Swedish historical Museum, Philadelphia

Notes: Motif from the Big Thompson Canyon in Colorado (east of Estes Park). Selling price of print in 1930 was \$15.



L - 139

The Mill on the Smoky

Alternative Title: *On the Smoky* (owner in North Dakota 2005)

Date: 1932

Medium: lithograph on paper

Image Size: 16 x 20.125 inches, signature in stone "Birger Sandzén 1932" in lower right.

Edition: 100 impressions

Printer: Printed by Western Lithograph Company, Wichita, Kansas.

Reproduction:

Exhibitions:

Collections:

Notes:



L - 140

In Old Central City

Date: 1933

Medium: lithograph on paper

Image Size: 21 x 17 inches, signature in stone "Birger Sandzén Central City 1933" in lower right.

Edition: 100 impressions

Printer:

Reproduction:

Exhibitions:

Collections: American Swedish Historical Museum, Philadelphia; Stiftelson Smalands Museum, Vaxjo, Sweden.

Notes: Motif from Central City, Colorado. Selling price of print in 1930 was \$15.



L - 141

The Sentinel of the Mesa

Date: 1933

Medium: lithograph on paper

Image Size: 12.75 x 16.75 inches, signature in stone "B. S-n" in lower left of center.

Edition:

Printer:

Reproduction:

Exhibitions:

Collections: American Swedish Historical Museum, Philadelphia.

Notes: Motif from Mesa Verde National Park in Colorado. Selling price of print in 1930 was \$12.



L - 142

Graham County Farm

Date: 1933

Medium: lithograph on paper

Image Size: 8.875 x 12.875 inches, signature in stone "B. S-n" in lower right.

Edition: 100 impressions

Printer:

Reproduction:

Exhibitions:

Collections:

Notes: Motif from the Sandzén family farm in Graham County, Kansas. Image is of the renter's house on the farm. Selling price of print in 1930 was \$7



L - 143

A Mountain Studio

Date: 1934

Medium: lithograph on paper

Image Size: 12 x 18 inches, signature in stone "Birger Sandzén" in lower right.

Edition: 100 impressions

Printer:

Reproduction:

Exhibitions:

Collections:

Notes: Print differs slightly in size. This may do to the different papers used during the printing process or some other unknown cause.



L - 144

A Mountain Home

Alternative Titles: *A Mountain Cabin*
A Mountain Cottage

Date: 1934

Medium: lithograph on paper

Image Size: 12 x 18 inches, signature in stone “Birger Sandzén” in lower right.

Edition: 100 impressions

Printer:

Reproduction:

Exhibitions:

Collections:

Notes: Motif from Estes Park, Colorado. This home was located near the Sandzén's summer home in Estes. Selling price of print in 1930 was \$10.



L - 145

Haunted Trees

Date: 1934

Medium: lithograph on paper

Image Size: 16 x 20.875 inches, signature in stone "Birger Sandzén" in lower left.

Edition: 100 impressions

Printer:

Reproduction:

Exhibitions:

Collections:

Notes: Motif from Trail Ridge Road in Rocky Mountain National Park, Colorado. "Illustrated in ""Graphic Works"". Selling price of print in 1930 was \$15"



L -146

The Hillside Farm

Alternative Title: *Kansas Farm*

Date: 1934

Medium: lithograph on paper

Image Size: 10 x 14 inches, signature in stone "Birger Sandzén" in lower right of center.

Edition: 100 impressions

Printer:

Reproduction:

Exhibitions:

Collections:

Notes: "Motif from the "'Sand Springs Melon District'" in Dickinson County (west of Abilene) on old highway 40." Lithograph was used as a reproduction for the United Trust Company in Abilene.



L - 147

Meadow Pond

Date: 1934

Medium: lithograph on paper

Image Size: 16 x 20 inches, signature in stone "Birger Sandzén" in lower right.

Edition: 100 impressions

Printer:

Reproduction:

Exhibitions:

Collections:

Notes:



L - 148

Smoky River

Date: 1935

Medium: lithograph on paper

Image Size: 10 x 14 inches, signature in stone "B. S-n" in lower right.

Edition: 100 impressions

Printer:

Reproduction:

Exhibitions:

Collections:

Notes:



L - 149

Whispering Aspens

Date: 1935

Medium: lithograph on paper

Image Size: 10 x 14 inches, signature in stone "Birger Sandzén in lower right.

Edition: 100 impressions

Printer:

Reproduction:

Exhibitions:

Collections:

Notes:



L - 150

White Trumpets

Date: 1935

Medium: lithograph on paper

Image Size: 17.125 x 22 inches, signature in stone "Birger Sandzén" in lower left.

Edition: 50 impressions

Printer:

Reproduction:

Exhibitions:

Collections: NAMA, Stiftelson Smalands Museum, Vaxjo, Sweden

Notes: "Illustrated in ""Graphic Works"""



L - 151

Glimpse of Taxco

Alternative Title: *Temple of Quetzalcoatl*

Date: 1935

Medium: lithograph on paper

Image Size: 16.125 x 20 inches, signature in stone "Birger Sandzén" in lower left.

Edition: 100 impressions

Printer:

Reproduction:

Exhibitions:

Collections: FJJMA, Stiftelson Smalands Museum, Vaxjo, Sweden

Notes: "Illustrated in ""Graphic Works"""



L - 152

Temple of Quetzalcoatl

Date: 1935

Medium: lithograph on paper

Image Size: 16 x 20 inches, signature in stone "Birger Sandzén Teotihuacan Mexico 1935" in lower right.

Edition: 50 impressions

Printer: Printed by Western Lithograph Company, Wichita, Kansas.

Reproduction:

Exhibitions:

Collections: Memorial Art Gallery of the University of Rochester

Notes: "Illustrated in ""Graphic Works"""



L - 153

Farm on Smoky River

Date: 1936

Medium: lithograph on paper

Image Size: 16.125 x 20.125 inches, signature in stone "Birger Sandzén" in lower right.

Edition: 100 impressions

Printer: Printed by Western Lithograph Company, Wichita, Kansas.

Reproduction:

Exhibitions:

Collections:

Notes:



L - 154

The Old Cecil Homestead

Date: 1936

Medium: lithograph on paper

Image Size: 16 x 20 inches, signature in stone "Birger Sandzén" in lower right.

Edition: 100 impressions

Printer: Printed by Western Lithograph Company, Wichita, Kansas.

Reproduction:

Exhibitions:

Collections: American Swedish Historical Museum, Philadelphia; Stifelson Smalands Museum, Vaxjo, Sweden.

Notes: Homestead of Mrs Carl Anderson's (McPherson) family in Missouri. Commissioned by Mrs. Carl Anderson, McPherson, of her old family homestead in Missouri.



L - 155

Corner of Nevadaville

Alternative Titles: *A Corner of Nevadaville*

Date: 1937

Medium: lithograph on paper

Image Size: 10.125 x 14 inches, signature in stone "Birger Sandzén" in lower right.

Edition: 100 impressions

Printer:

Reproduction:

Exhibitions:

Collections:

Notes:



L - 156

Mountain Solitude

Date: 1937

Medium: lithograph on paper

Image Size: 16 x 20 inches, signature in stone "Birger Sandzén" in lower right.

Edition: 100 impressions

Printer:

Reproduction:

Exhibitions:

Collections:

Notes: "Illustrated in ""Graphic Works"""



L - 157

Hillside Brook

Date: 1937

Medium: lithograph on paper

Image Size: 16.125 x 20.125 inches, signature in stone "Birger Sandzén" in lower right.

Edition: 100 impressions

Printer:

Reproduction:

Exhibitions:

Collections:

Notes:



L - 158

Smoky River Willows

Date: 1937

Medium: lithograph on paper

Image Size: 10 x 14 inches, signature in stone "Birger Sandzén" in lower right.

Edition: 100 impressions

Printer: Printed by Western Lithograph Company, Wichita, Kansas.

Reproduction:

Exhibitions:

Collections:

Notes: "There is a smaller REDUCTION Facsimile of this print measuring 4 1/2 x 6 inches and there is a FACSIMILE (unknown edition size) of this print that measures the same as the original ("pencil" signature is smaller and dotted and ink is not as sharp)."



L - 159

Mountain Stream

Date: 1937

Medium: lithograph on paper

Image Size: 10 x 14 inches, signature in stone "Birger Sandzén" in lower right.

Edition: 100 impressions

Printer: Printed by Western Lithograph Company, Wichita, Kansas.

Reproduction:

Exhibitions:

Collections:

Notes:



L – 160

Nils Gustaf's House

Date: 1938

Medium: lithograph on paper

Image Size: 16.125 x 20.125 inches, signature in stone “Birger Sandzén 1938” in lower left.

Edition: 100 impressions

Printer: Printed by Western Lithograph Company, Wichita, Kansas.

Reproduction:

Exhibitions:

Collections:

Notes: House with foliage around it. The house was located off of Swenson street west of the water tower. It was located near the present site of St. Bridget's church.



L - 161

Trees and Wheat Fields

Date: 1938

Medium: lithograph on paper

Image Size: 11 x 14 inches, signature in stone "Birger Sandzén" in lower right.

Edition: 100 impressions

Printer: Printed by Western Lithograph Company, Wichita, Kansas.

Reproduction:

Exhibitions:

Collections:

Notes: Motif of farm scene 3 miles north of Lindsborg.



L - 162

Kansas Stream

Date: 1939

Medium: lithograph on paper

Image Size: 10 x 14 inches, signature in stone "Birger Sandzén" in lower right.

Edition: 100 impressions

Printer:

Reproduction:

Exhibitions:

Collections:

Notes:



L - 163

Pastures

Date: 1939

Medium: lithograph on paper

Image Size: 16 x 20 inches, signature in stone "Birger Sandzén" in lower right of center.

Edition: 100 impressions

Printer:

Reproduction:

Exhibitions: SMA, Memorial Art Gallery of the University of Rochester; Madison Art Center

Collections:

Notes:



L - 164

Summer Landscape

Alternative Titles: *Cottonwoods*

Along the Smoky Hill River

Date: 1940

Medium: lithograph on paper

Image Size: 10 x 11.875 inches, signature in stone "Birger Sandzén" in lower right of center.

Edition: 50 impressions

Printer:

Reproduction:

Exhibitions:

Collections: American Swedish Historical Museum, Philadelphia; Connecticut Academy of Fine Arts; FJJMA

Notes: Motif from the Smoky Hill River. Lithograph was used as a reproduction for the United Trust Company in Abilene. Another reproduction issued in the same size as original print - difficult to distinguish from the fine art edition.



L - 165

Sandstone and Cottonwood

Date: 1940

Medium: lithograph on paper

Image Size: 10.125 x 12.125 inches, signature in stone "Birger Sandzén" in lower right.

Edition: 50 impressions

Printer:

Reproduction:

Exhibitions:

Collections:

Notes:



L - 166

Hillside Farm

Date: 1940

Medium: lithograph on paper

Image Size: 10.125 x 12 inches, signature in stone "Birger Sandzén" in lower right of center.

Edition: 50 impressions

Printer:

Reproduction:

Exhibitions:

Collections:

Notes:



L – 167

Kansas Farm

Date: 1940

Medium: lithograph on paper

Image Size: 10.125 x 12 inches, signature in stone “Birger Sandzén” in lower left.

Edition: 50 impressions

Printer:

Reproduction:

Exhibitions:

Collections: Connecticut Academy of Fine Arts

Notes: Farm was located close to Coronado Heights and goes back to approx. 1869. Lithograph was used as a reproduction for the United Trust Company in Abilene.



L - 168

Saline River

Date: 1941

Medium: lithograph on paper

Image Size: 10.25 x 12 inches, signature in stone "Birger Sandzén" in lower right.

Edition: 50 impressions

Printer:

Reproduction:

Exhibitions:

Collections:

Notes: Motif from Russell, Kansas



L - 169

Creek and Pasture

Date: 1941

Medium: lithograph on paper

Image Size: 11 x 14.365 inches, signature in stone “Birger Sandzén” in lower right.

Edition: 50 impressions

Printer:

Reproduction:

Exhibitions:

Collections:

Notes:



L - 170

Rags

Date: 1942

Medium: lithograph on paper

Image Size: 10.25 x 11.875 inches, signature in stone "Birger Sandzén" in lower right.

Edition:

Printer:

Reproduction:

Exhibitions:

Collections: American Swedish historical Museum, Philadelphia.

Notes:



L - 171

River and Cottonwood Trees

Date: 1942

Medium: lithograph on paper

Image Size: 10 x 12.125 inches, signature in stone "Birger Sandzén" in lower right.

Edition: 50 impressions

Printer:

Reproduction:

Exhibitions:

Collections:

Notes:



L - 172

Wildcat Valley Farm

Date: 1942

Medium: lithograph on paper

Image Size: 10.125 x 12.125 inches, signature in stone “Margaret and Birger Sandzén 1942” in lower right.

Edition: 50 impressions

Printer:

Reproduction:

Exhibitions:

Collections:

Notes: Completed by Birger Sandzén and Margaret Sandzén Greenough.



L - 173

White Rocks

Date: 1942

Medium: lithograph on paper

Image Size: 15.125 x 20 inches, signature in stone "Birger Sandzén" in lower right.

Edition: 100 impressions

Printer:

Reproduction:

Exhibitions:

Collections: American Swedish Historical Museum, Philadelphia.

Notes: "Illustrated in ""Graphic Works""."



L - 174

Anno 1868

Alternative Title: *Home 1868*

Date: 1942

Medium: lithograph on paper

Image Size: 10 x 12 inches, signature in stone "Birger Sandzén" in lower right of center.

Edition: 100 impressions

Printer:

Reproduction:

Exhibitions:

Collections:

Notes: "Lithograph was used as a reproduction for the United Trust Company in Abilene - titled ""Kansas Pioneer Home."""



L - 175

Brook with Cottonwood Trees

Date: 1943

Medium: lithograph on paper

Image Size: 11.125 x 14 inches, signature in stone “Birger Sandzén” in lower right.

Edition: 75 impressions

Printer:

Reproduction:

Exhibitions:

Collections:

Notes:



L - 176

At the Timberline

Date: 1943

Medium: lithograph on paper

Image Size: 16.125 x 19.25 inches, signature in stone "Birger Sandzén" in lower right.

Edition: 60 impressions

Printer:

Reproduction:

Exhibitions:

Collections: American Swedish Historical Museum, Philadelphia.

Notes:



L - 177

Nature's Bridge

Date: 1944

Medium: lithograph on paper

Image Size: 14.125 x 18.375 inches, signature in stone "Birger Sandzén" in lower left of center.

Edition: 70 impressions

Printer:

Reproduction:

Exhibitions: American Swedish Historical Museum, Philadelphia.

Collections:

Notes:



L - 178

Meadow Pond

Date: 1944

Medium: lithograph on paper

Image Size: 14.125 x 18.375 inches, signature in stone "Birger Sandzén" in lower right.

Edition: 115 impressions

Printer:

Reproduction:

Exhibitions:

Collections:

Notes:



L - 179

Summer Twilight

Date: 1944

Medium: lithograph on paper

Image Size: 10.875 x 14.375 inches, signature in stone "Birger Sandzén" in lower right of center.

Edition: 105 impressions

Printer:

Reproduction:

Exhibitions:

Collections:

Notes: Motif from the Smoky Hill River about 2 miles south of Lindsborg. Raised stamp on paper written: Cuno, Philadelphia.



L - 180

Creek and Pasture

Date: 1944

Medium: lithograph on paper

Image Size: 10.25 x 12 inches, signature in stone "Birger Sandzén" in lower right.

Edition: 105 impressions

Printer:

Reproduction:

Exhibitions:

Collections:

Notes:



L - 181

Stevenson Lake

Date: 1944

Medium: lithograph on paper

Image Size: 16.125 x 20.25 inches, signature in stone "Birger Sandzén" in lower left.

Edition: 105 impressions

Printer:

Reproduction:

Exhibitions:

Collections: LC

Notes:



L - 182

Old Ranch House

Date: 1944

Medium: lithograph on paper

Image Size: 11.25 x 14 inches, signature in stone "Birger Sandzén" in lower left.

Edition: 100 impressions

Printer:

Reproduction:

Exhibitions:

Collections:

Notes: "An owner of this print indicated she had been told that the location of this print was an old stonehouse with a stone barn in back of it and was located about 45 minutes southeast of McPherson. Sandzén described it as a ""picturesque landmark."""



L - 183

Coronado Heights

Date: 1944

Medium: lithograph on paper

Image Size: 14 x 18.375 inches, signature in stone "Birger Sandzén" in lower left of center.

Edition: 100 impressions

Printer:

Reproduction:

Exhibitions:

Collections:

Notes:



L - 184

In the Rockies

Date: 1945

Medium: lithograph on paper

Image Size: 11 x 14.125 inches, signature in stone "B. S-n" in lower left.

Edition: 75 impressions

Printer:

Reproduction:

Exhibitions:

Collections:

Notes:



L - 185

Barker Homestead

Date: 1945

Medium: lithograph on paper

Image Size: 13.875 x 18.25 inches, signature in stone "Birger Sandzén" in lower right.

Edition: 50 impressions

Printer:

Reproduction:

Exhibitions:

Collections:

Notes: Original homestead is located in the NE NW Quarter of Section 4 in Saline County. Another version of this motif done by Herschel Logan according to Ted Farmer of Eldorado, Kansas.



L - 186

Bennington Lake

Date: 1945

Medium: lithograph on paper

Image Size: 14 x 18.25 inches, signature in stone "Birger Sandzén" in lower right of center.

Edition: 100 impressions

Printer:

Reproduction:

Exhibitions:

Collections: LC

Notes:



L - 187

Smoky Hill River

Date: 1946

Medium: lithograph on paper

Image Size: 11 x 14.25 inches, signature in stone "B. S-n" in lower left.

Edition: 100 impressions

Printer:

Reproduction:

Exhibitions:

Collections:

Notes:



L - 188

Creek and Hills

Date: 1946

Medium: lithograph on paper

Image Size: 11 x 14.125 inches, signature in stone "B. S-n" in lower right.

Edition: 84 impressions

Printer:

Reproduction:

Exhibitions:

Collections:

Notes:



L - 189

Magnolias

Date: 1946

Medium: lithograph on paper

Image Size: 14.125 x 18.375 inches, signature in stone "Birger Sandzén" in lower right.

Edition: 100 impressions

Printer:

Reproduction:

Exhibitions:

Collections:

Notes: "Illustrated in ""Graphic Works""."



L - 190

Twin Mounds

Date: 1946

Medium: lithograph on paper

Image Size: 14 x 18.5 inches, signature in stone “Birger Sandzén” in lower right.

Edition: 100 impressions

Printer:

Reproduction:

Exhibitions:

Collections:

Notes:



L - 191

River Bend

Alternative Title: *Riverbend*

Date: 1947

Medium: lithograph on paper

Image Size: 10.125 x 14.125 inches, signature in stone "Birger Sandzén" in lower right.

Edition: 100 impressions

Printer:

Reproduction:

Exhibitions:

Collections:

Notes:



L - 192

Smoky Valley Farm

Date: 1947

Medium: lithograph on paper

Image Size: 9.875 x 14.375 inches, signature in stone "Birger Sandzén" in lower right.

Edition: 100 impressions

Printer:

Reproduction:

Exhibitions:

Collections:

Notes:



L - 193

Rocky Mountain Lake

Date: 1948

Medium: lithograph on paper

Image Size: 10 x 14 impressions, signature in stone "Birger Sandzén" in lower right.

Edition: size unknown

Printer:

Reproduction:

Exhibitions:

Collections:

Notes: For Academy of Fine Arts, Hartford, Connecticut.



L - 194

Lake in the Rockies

Date: 1948

Medium: lithograph on paper

Image Size: 7.125 x 10 inches, signature in stone "Birger Sandzén" in lower right.

Edition: size unknown

Printer:

Reproduction:

Exhibitions:

Collections:

Notes: For Friends of Art, Manhattan, Kansas



L - 195

Rocky Coast

Date: 1948

Medium: lithograph on paper

Image Size: 9.875 x 14.25 inches, signature in stone "Birger Sandzén" in lower right.

Edition: 100 impressions

Printer:

Reproduction:

Exhibitions:

Collections:

Notes:



L - 196

Valley Stream

Date: 1948

Medium: lithograph on paper

Image Size: 9.875 x 14.25 inches, signature in stone "Birger Sandzén" in lower right.

Edition: 100 impressions

Printer:

Reproduction:

Exhibitions:

Collections:

Notes:



L - 197

Weld Pond

Date: 1949

Medium: lithograph on paper

Image Size: 15 x 20.375 inches, signature in stone "Birger Sandzén" in lower right.

Edition: 100 impressions

Printer:

Reproduction:

Exhibitions:

Collections:

Notes: "Illustrated in ""Graphic Works"""



L - 198

Early Moon

Date: 1949

Medium: lithograph on paper

Image Size: 10.125 x 14.125 inches, signature in stone "Birger Sandzén" in lower right center.

Edition: 100 impressions

Printer:

Reproduction:

Exhibitions:

Collections:

Notes:



L - 199

Frida's Creek

Date: 1949

Medium: lithograph on paper

Image Size: 10.125 x 14.125 inches, signature in stone "Birger Sandzén" in lower right center.

Edition: 100 impressions

Printer:

Reproduction:

Exhibitions:

Collections:

Notes:



L - 200

Fishermen's Cottages

Date: 1950

Medium: lithograph on paper

Image Size: 10 x 14.375 inches, signature in stone "Birger Sandzén" in lower right center.

Edition: 100 impressions

Printer:

Reproduction:

Exhibitions:

Collections:

Notes:



L - 201

Kansas Wheat Farm

Date: 1950

Medium: lithograph on paper

Image Size: 15 x 20.125 inches, signature in stone "Birger Sandzén" in lower right.

Edition: 100 impressions

Printer:

Reproduction:

Exhibitions:

Collections:

Notes:



L - 202

Twisted Pines

Date: 1950

Medium: lithograph on paper

Image Size: 15 x 20.125 inches, signature in stone "Birger Sandzén" in lower right center.

Edition: 100 impressions

Printer:

Reproduction:

Exhibitions:

Collections:

Notes:



L - 203

Kansas River

Date: 1951

Medium: lithograph on paper

Image Size: 10 x 14.25 inches, signature in stone "Birger Sandzén" in lower right center.

Edition: 100 impressions

Printer:

Reproduction:

Exhibitions:

Collections:

Notes:



L - 204

Carmel Cedars

Date: 1951

Medium: lithograph on paper

Image Size: 10 x 14.375 inches, signature in stone "Birger Sandzén" in lower right.

Edition: 100 impressions

Printer:

Reproduction:

Exhibitions:

Collections:

Notes:



L - 205

Kansas Hills

Date: 1952

Medium: lithograph on paper

Image Size: 10.25 x 14.125 inches, signature in stone "B. S-n" in lower left.

Edition: 100 impressions

Printer:

Reproduction:

Exhibitions:

Collections:

Notes:



L - 206

In the Foothills

Date: 1952

Medium: lithograph on paper

Image Size: 10.25 x 14 inches, signature in stone "B. S-n" in lower right.

Edition: 100 impressions

Printer:

Reproduction:

Exhibitions:

Collections:

Notes:



L - 207

Once a Home

Date: 1952

Medium: lithograph on paper

Image Size: 10.25 x 13.875 inches, signature in stone "B. S-n" in lower right.

Edition: 100 impressions

Printer:

Reproduction:

Exhibitions:

Collections:

Notes: