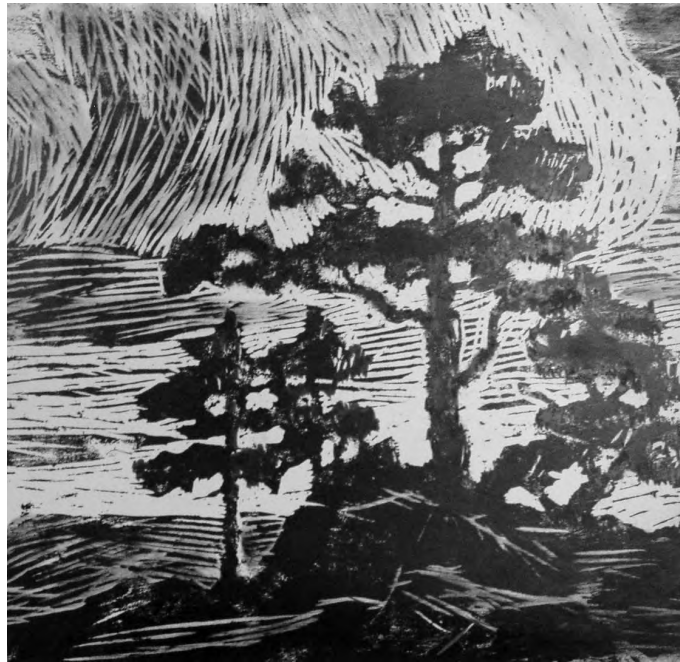


Block Prints by Birger Sandzén



Notes to the Catalogue Entries

This is the beginning of a complete catalogue raisonné of the 328 prints of Birger Sandzén (1871-1954), expanding Charles Pelham Greenough's 1952 work, *The Graphic Work of Birger Sandzén*. The Sandzén Gallery will be updating online entry pages regularly, with the goal of publishing by 2019.

Readers are encouraged to send corrections and suggestions to the Gallery, emailing Curator Cori Sherman North at corinorth@gmail.com.

Photographs of each print appear first on an entry page. Old images will be upgraded over time.

The original Greenough catalogue numbers appear following image(s) on each page. These numbers were assigned chronologically, within the three medium categories: Lithograph (L), Blockprint (B), and Drypoints (D).

Titles and any alternate titles Sandzén inscribed on print lower margins are listed.

Height precedes width in the image dimensions, followed by signatures included in block, plate, or stone.

Sandezén did not number his editions. His inscription practice was to sign and title each print in pencil in the lower margin, so "inscription" description will not be given in entries.

Public Collections abbreviations:

BSMG.....Birger Sandzén Memorial Gallery, Lindsborg, KS
BM.....British Museum, London, England
BMA.....Marianna Kistler Beach Museum of Art, Kansas State University, Manhattan, KS
CMA.....Chazen Museum of Art, University of Wisconsin-Madison, Madison, WI
DAM.....Denver Art Museum, Denver, CO
DMAC.....Des Moines Art Center, Des Moines, IA
DPL.....Denver Public Library, Denver, CO
DtPL.....Detroit Public Library, Detroit, MI
EM.....Evansville Museum, Evansville, IN
FAMSF.....Fine Art Museums of San Francisco, San Francisco, CA
FJJMA.....Fred Jones, Jr. Museum of Art, University of Oklahoma, Norman, OK
GKM.....Goteborgs Konstmuseum, Gothenburg, Sweden
GMA.....Georgia Museum of Art, University of Georgia, Athens, GA
HAM.....Harvard Art Museums, Harvard University, New Haven, CT
IMA.....Indianapolis Museum of Art, Indianapolis, IN
KMFDA.....Kirkland Museum of Fine & Decorative Art, Denver, CO
LACMA.....Los Angeles County Museum of Art, Los Angeles, CA
LC.....Library of Congress, Washington, D.C.
MAA.....Museum of Art and Archaeology, University of Missouri, Columbia, MO
MAM.....McNay Art Museum, San Antonio, TX
MFAH.....Museum of Fine Arts Houston, Houston, TX
Mia.....Minneapolis Institute of Art, Minneapolis, MN
MMA.....Maier Museum of Art, Randolph College, Lynchburg, VA
MNM.....Museum of New Mexico, Santa Fe, NM
MSAC.....McPherson Schools Art Collection, McPherson, KS
MTTU.....Museum of Texas Tech University, Lubbock, TX

NAMA.....Nelson-Atkins Museum of Art, Kansas City, MO
NEHMA.....Nora Eccles Harrison Museum of Art, Utah State University, Logan, UT
NGA.....National Gallery of Art, Washington, D.C.
NM.....Nationalmuseum, Stockholm, Sweden
NYPL.....New York Public Library, New York City, NY
OKCMA.....Oklahoma City Museum of Art, Oklahoma City, OK
PAM.....Portland Art Museum, Portland, OR
PMA.....Philadelphia Museum of Art, Philadelphia, PA
SAAM.....Smithsonian American Art Museum, Washington, D.C.
SMA.....Helen Foresman Spencer Museum of Art, University of Kansas, Lawrence, KS
SMAUNL.....Sheldon Museum of Art, University of Nebraska-Lincoln, Lincoln, NE
WAM.....Wichita Art Museum, Wichita, KS
YUAG.....Yale University Art Gallery, Yale University, New Haven, CT



B - 1

Study of Pines

Alternate Title: *A Colorado Sunset*

Date: 1916, August 31

Medium: woodcut on paper

Image Size: 10 7/8 x 11 1/4 in., no signature in block

Edition: 7 impressions, published print cut down

Printer: Birger Sandzen, "First experiment with printing was done in the Studio."

Reproductions: none known

Exhibitions:

Collections:

Notes:



B - 2

Pines

Date: 1916, September 4

Medium: woodcut on paper

Image Size: 15 ½ x 10 7/8 in., no signature in block

Edition: 100 impressions, single state

Printer:

Reproductions: none known

Exhibitions:

Collections: BSMG

Notes: Motif from Boulder, Colorado



B - 3

In the Heart of the Rockies

Date: September 16, 1916

Medium: woodcut on paper

Image Size: 8 7/8 x 14 in., no signature in block

Edition: 100 impressions, single state, on heavyweight paper

Printer:

Reproductions:

Exhibitions:

Collections: BSMG, PMA

Notes: Motif of South Arapaho Peak, west of Boulder, Colorado



B - 4

Chinese Woolflowers

Date: 1916, September 25

Medium: woodcut on paper

Image Size: 14 x 9 in., no signature in block

Edition: 100 impressions, single state

Printer:

Reproductions:

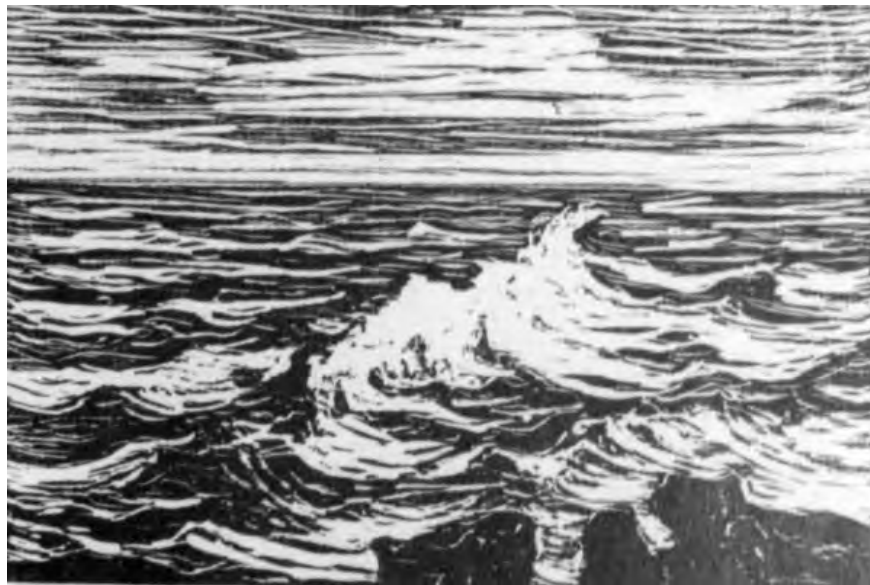
Exhibitions:

Collections: AIC, BSMG, NM, SMA

Notes: Illustrated in Greenough, *Graphic Works*, 4th edition, p.62



1st state



2nd state

B - 5

After the Storm

Date: 1916, October 2

Image Size: 4 x 6 in., no signature in block

Medium: woodcut on paper

Edition: 100 impressions, in two states

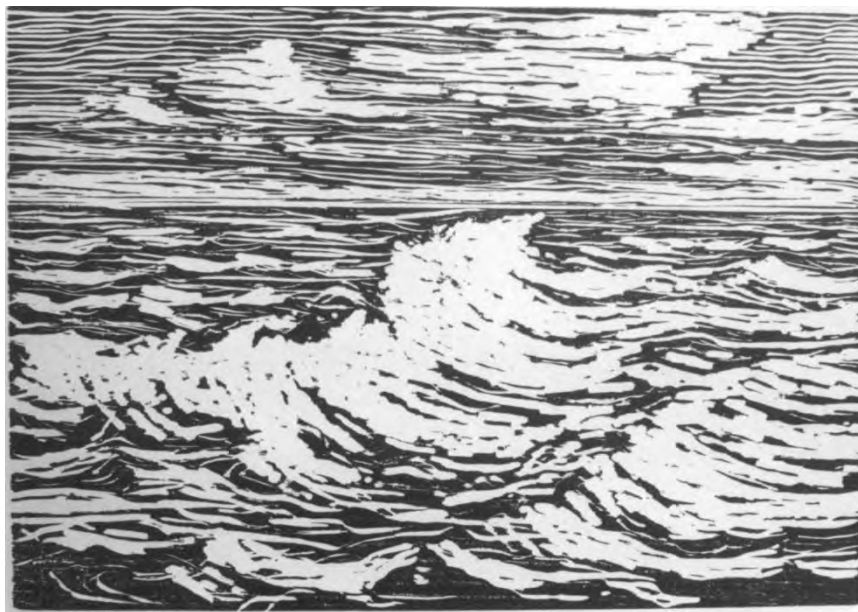
Printer:

Reproductions:

Exhibitions:

Collections: BSMG

Notes:



1st state



2nd state

B - 6

Summer Breeze

Date: 1916, October 7

Image Size: 7 x 10 in., no signature in block

Medium: woodcut on paper; "done with a pointed hard wood stick on soft wood"

Edition: 100 impressions, in two states

Printer:

Reproductions:

Exhibitions:

Collections: BSMG, FAMSF, MNM, PAM

Notes:



B - 7

Evening

Date: 1916, November 4

Medium: woodcut on paper; "done with nail on soft wood"

Image Size: 6 x 9 in., signature in block "B. S." in lower right

Edition: 100 impressions, single state

Printer:

Reproductions:

Exhibitions:

Collections: BSMG, PAM

Notes: Illustrated in Greenough, *Graphic Works*, 4th edition, p.63. Motif from Boulder, Colorado.



B - 8

The Desert Gateway

Date: 1916, November 8

Medium: woodcut on paper

Image Size: 7 x 10 in., signature in block "B. S." in lower right

Edition: 100 impressions, single state

Printer:

Reproductions:

Exhibitions:

Collections: BSMG, MNM

Notes: Illustrated in Greenough, *Graphic Works*, 4th edition, p.62. Motif from the Nevada desert.



B - 9

The Hill

Date: 1916, November 26

Medium: woodcut on paper

Image Size: 4 x 6 in., signature in block “B. S.” in lower right

Edition: 100 impressions, single state

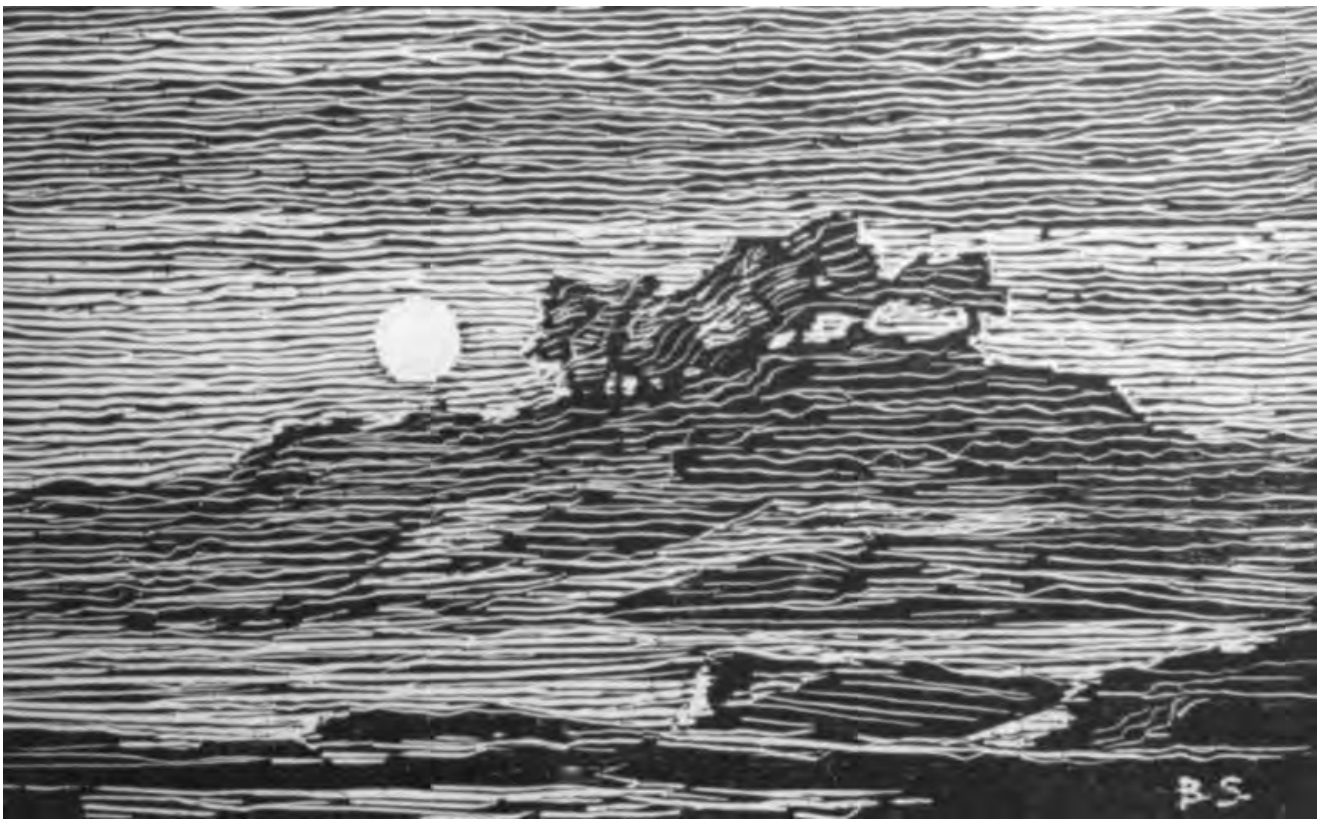
Printer:

Reproductions:

Exhibitions:

Collections: BSMG

Notes: Motif of Coronado Heights from the southwest, near Lindsborg, Kansas.



B - 10

Early Moonrise

Alternate Title: *Moonrise*

Date: 1916, December 9

Medium: woodcut on paper

Image Size: 5 x 8 in., signature in block "B. S." in lower right

Edition: 100 impressions, single state

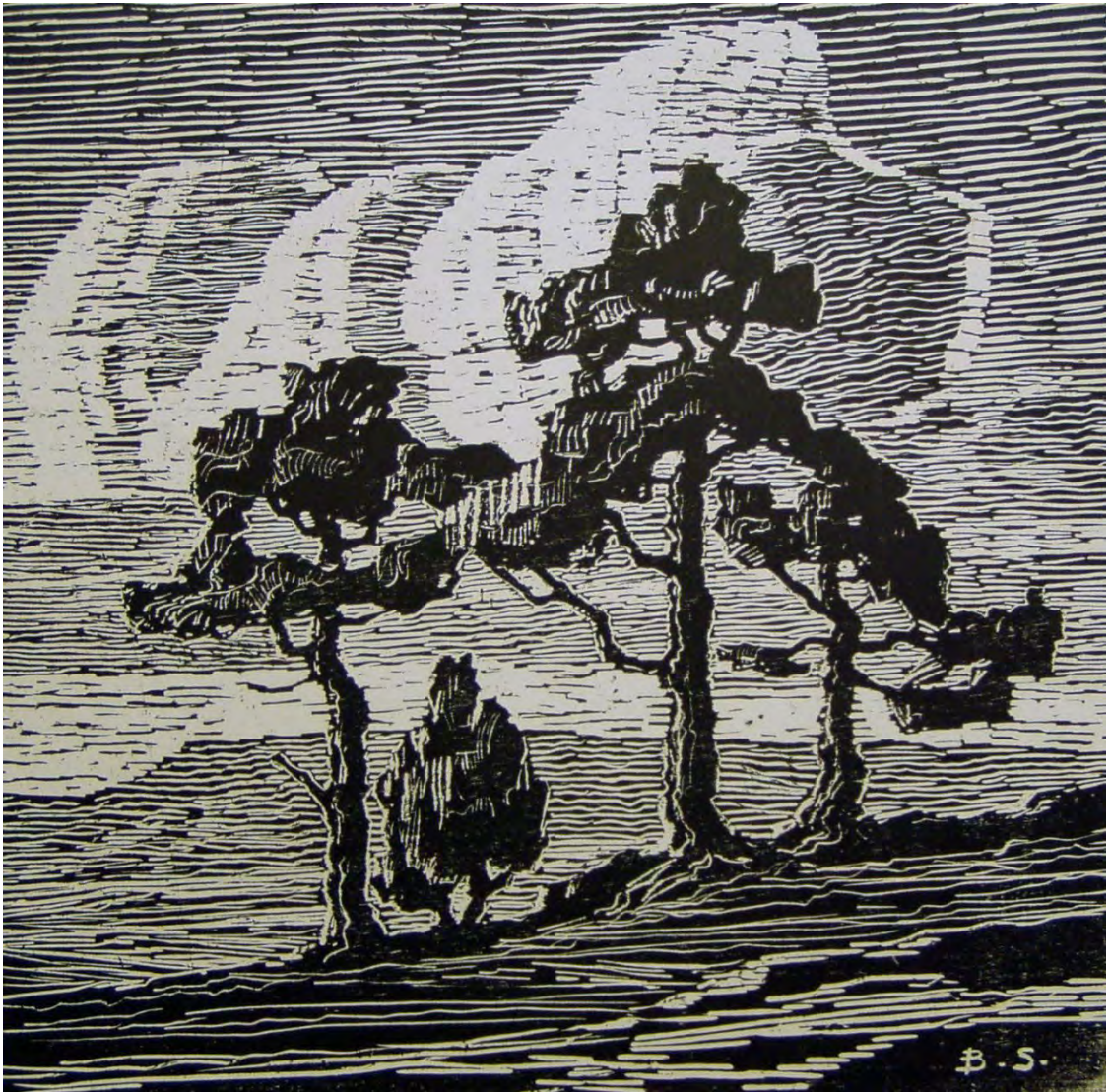
Printer:

Reproductions:

Exhibitions:

Collections: BSMG

Notes: Motif of Salemsborg Hills, north of Lindsborg.



B - 11

Afterglow

Date: 1917

Medium: woodcut on paper

Image Size: 12 x 12 in., signature in block "B. S." in lower right.

Edition: 100 impressions, in a single state.

Printer:

Reproduction:

Exhibitions:

Collections: NYPL

Notes: Motif from Boulder, Colorado.



B - 12

Rough Sea

Date: 1917

Medium: woodcut on paper

Image Size: 12 x 12 in., signature in block "B. S." in lower right.

Edition: 100 impressions, in a single state.

Printer:

Reproduction:

Exhibitions:

Collections: NYPL, MNM, NM, GKM

Notes:



B - 13

Rocks and Breakers

Date: 1917

Medium: woodcut on paper

Image Size: 12 x 12 in., signature in block "B.S." in lower right.

Edition: 100 impressions, in a single state.

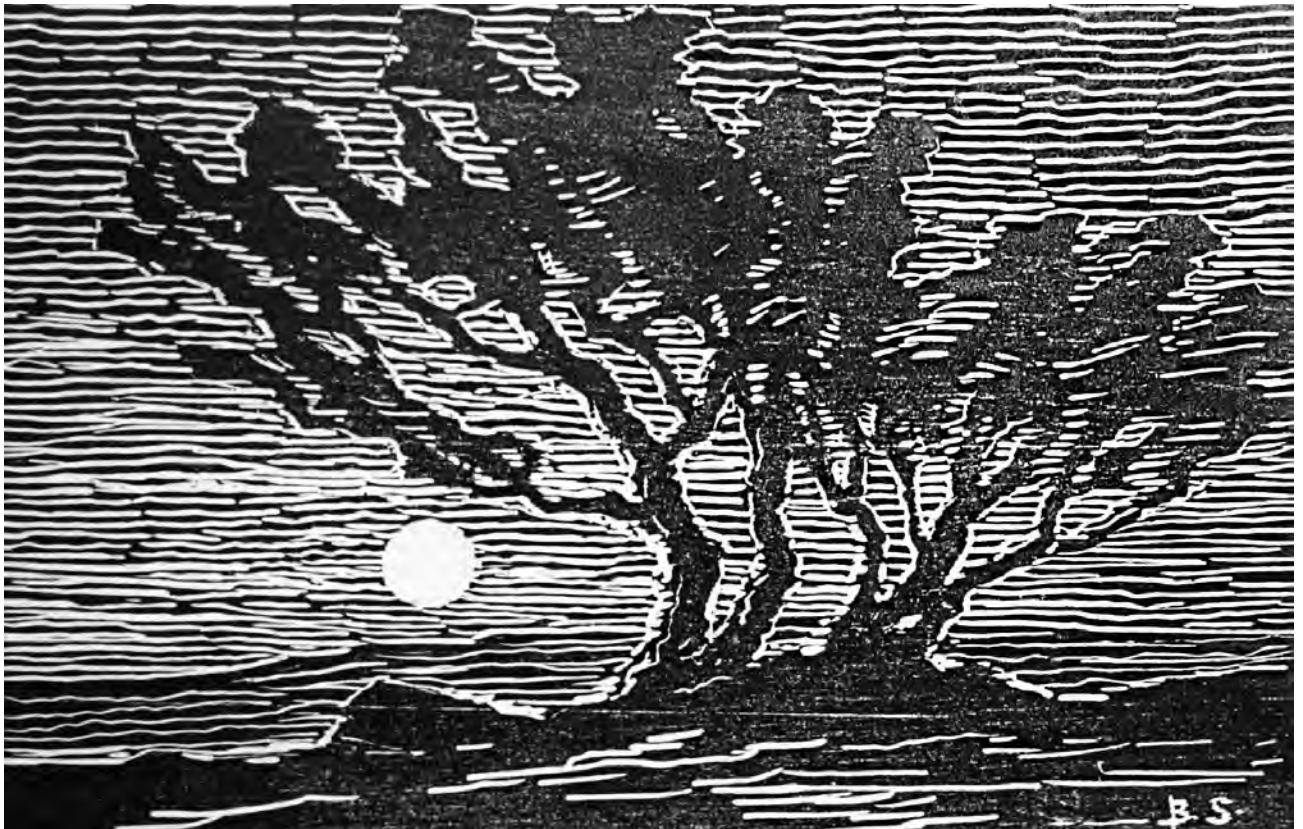
Printer:

Reproductions:

Exhibitions:

Collections:

Notes:



B - 14

Late Moonrise Evening

Date: 1917

Medium: woodcut on paper

Image Size: 6 x 9.125 in., signature in block "B.S." in lower right.

Edition: 100 impressions, in a single state.

Printer:

Reproduction:

Exhibitions:

Collections: PAM

Notes:



B 015

Among the Red Rocks

Date: 1917

Medium: woodcut (nailcut) on paper

Image Size: 12 x 12 in., signature in block "B. S." in lower left.

Edition: 100 impressions, in a single state.

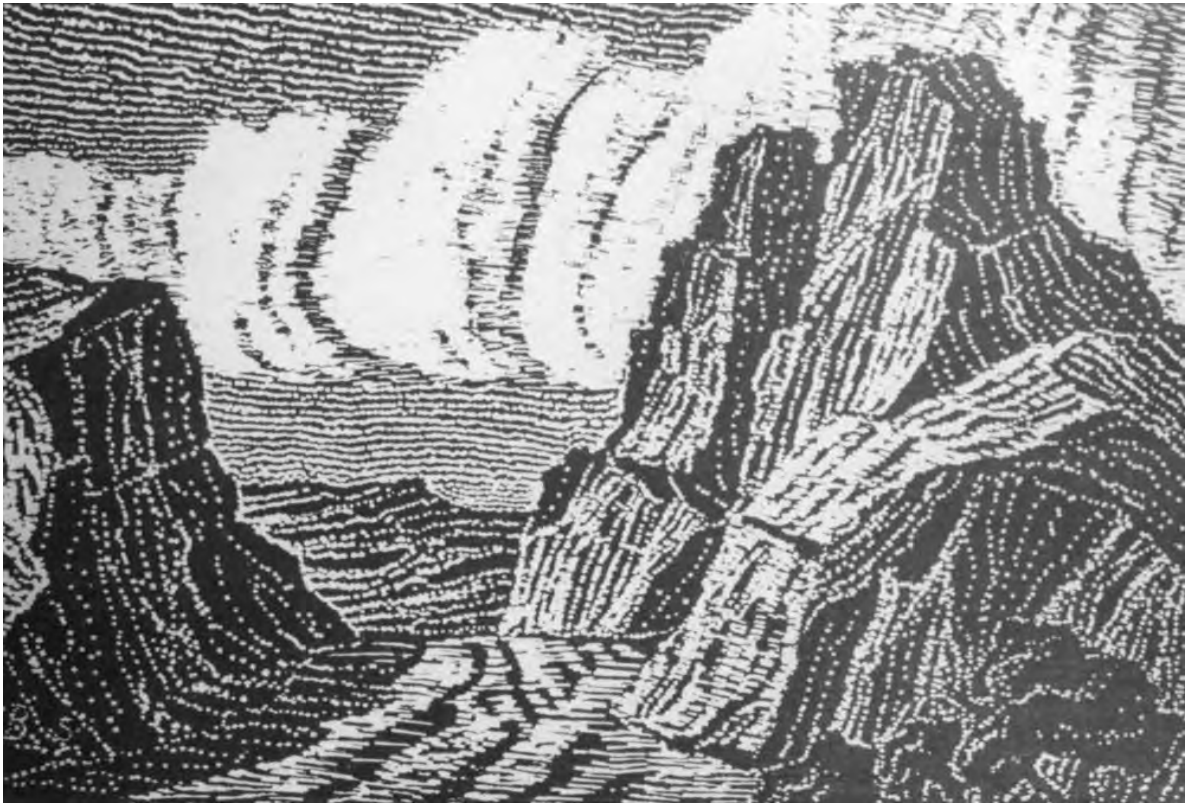
Printer:

Reproduction:

Exhibitions:

Collections: MNM, YUAG

Notes: Motif from the Red Rocks Canyon near Colorado Springs, Colorado.



B - 16

In the Red Rock Canyon

Alternative Title: *In the Red Rock Canyon, Colorado*

Date: 1917

Medium: woodcut (nailcut) on paper

Image Size: 12.125 x 17.875 in., signature in block "B. S." in lower left.

Edition: 100 impressions, in a single state.

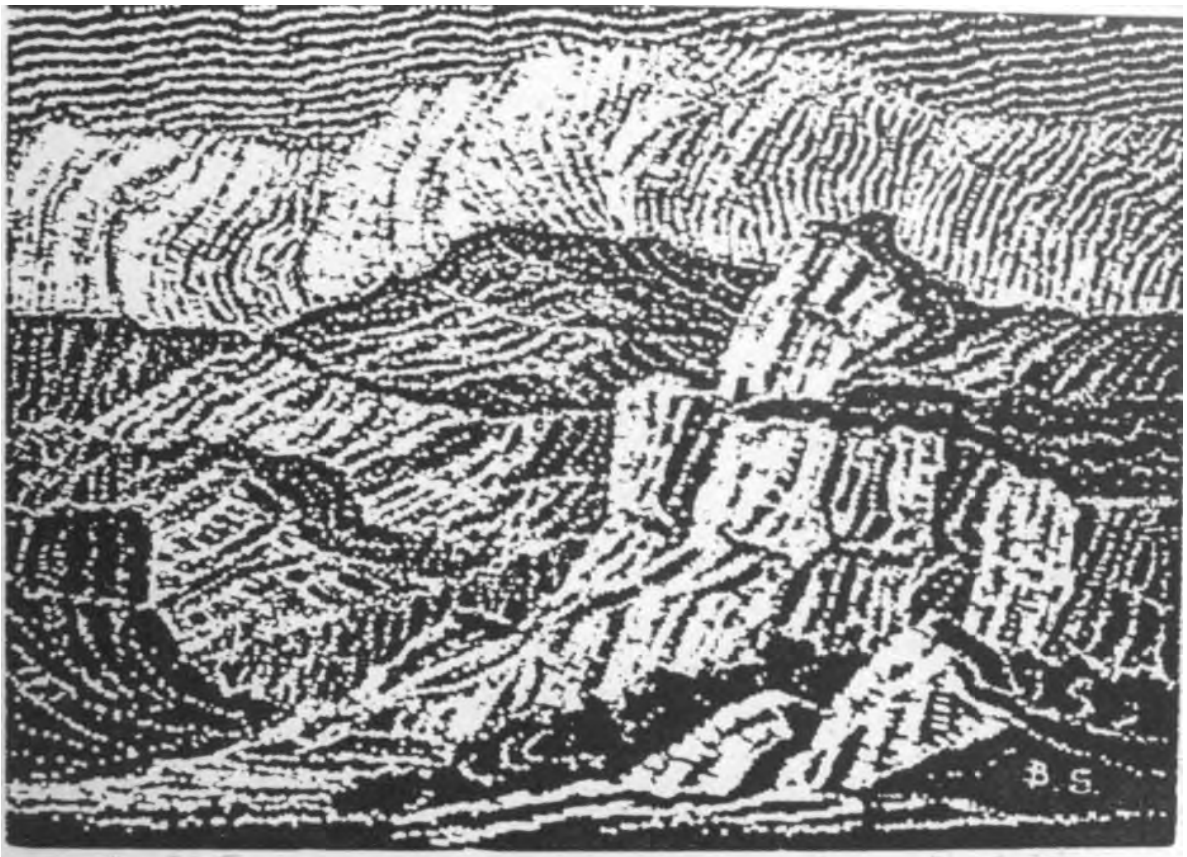
Printer:

Reproduction:

Exhibitions:

Collections: MNM,

Notes: Motif from the Red Rocks Canyon near Colorado Springs, Colorado.



B - 17

Mountain Terraces

Date: 1917

Medium: woodcut (nailcut) on paper

Image Size: 8.625 x 12 in., signature in block "B. S." in lower right.

Edition: 100 impressions, in a single state.

Printer:

Reproduction:

Exhibitions:

Collections:

Notes: Motif from Manitou, Colorado



B – 18

Hilltop After Sunset

Alternative Title: *Hilltop*

Date: 1917

Medium: woodcut (nailcut) on paper

Image Size: 6125 x 9.25 in., signature in block “B. S.” in lower right.

Edition: 100 impressions, in a single state.

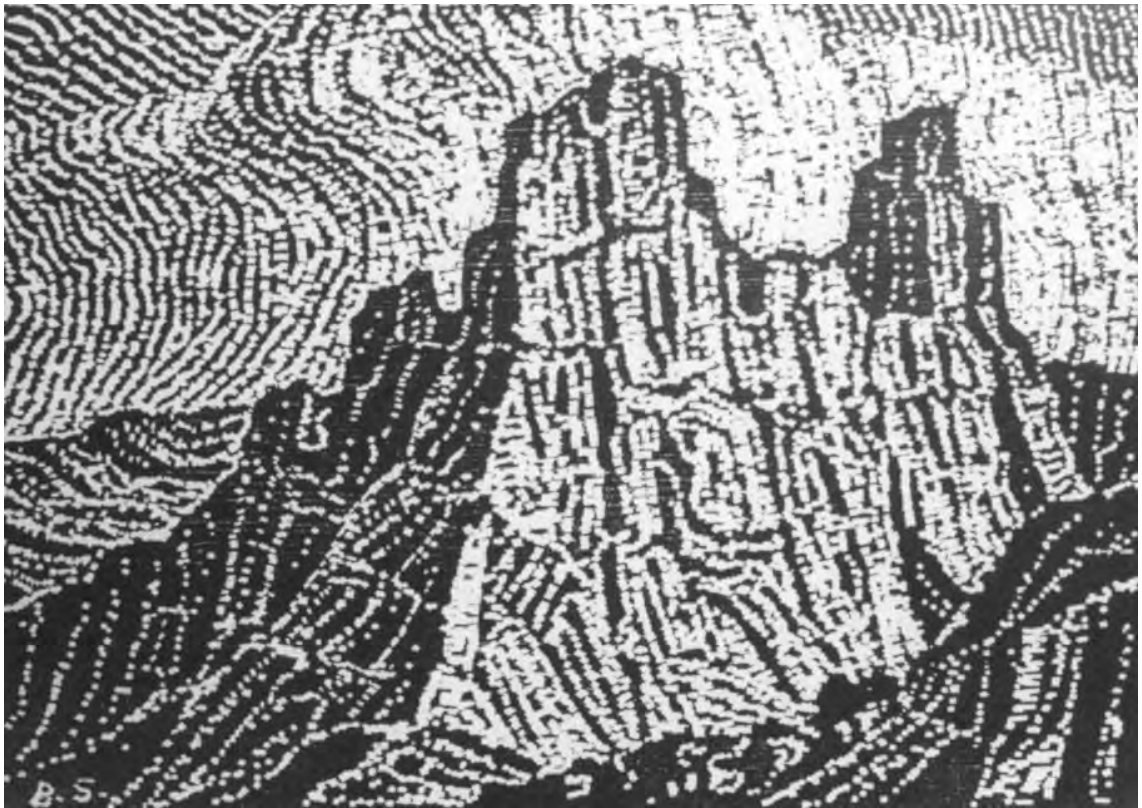
Printer:

Reproduction:

Exhibitions:

Collections:

Notes: Motif from the Salemsborg Hills, north of Lindsborg



B - 19

Granite Castle

Alternative Title: *The Granite Castle*

Date: 1917

Medium: woodcut (nailcut) on paper. Nail on soft wood

Image Size: 8.5 x 12 in., signature in block "B. S." in lower left.

Edition: 100 impressions, in a single state.

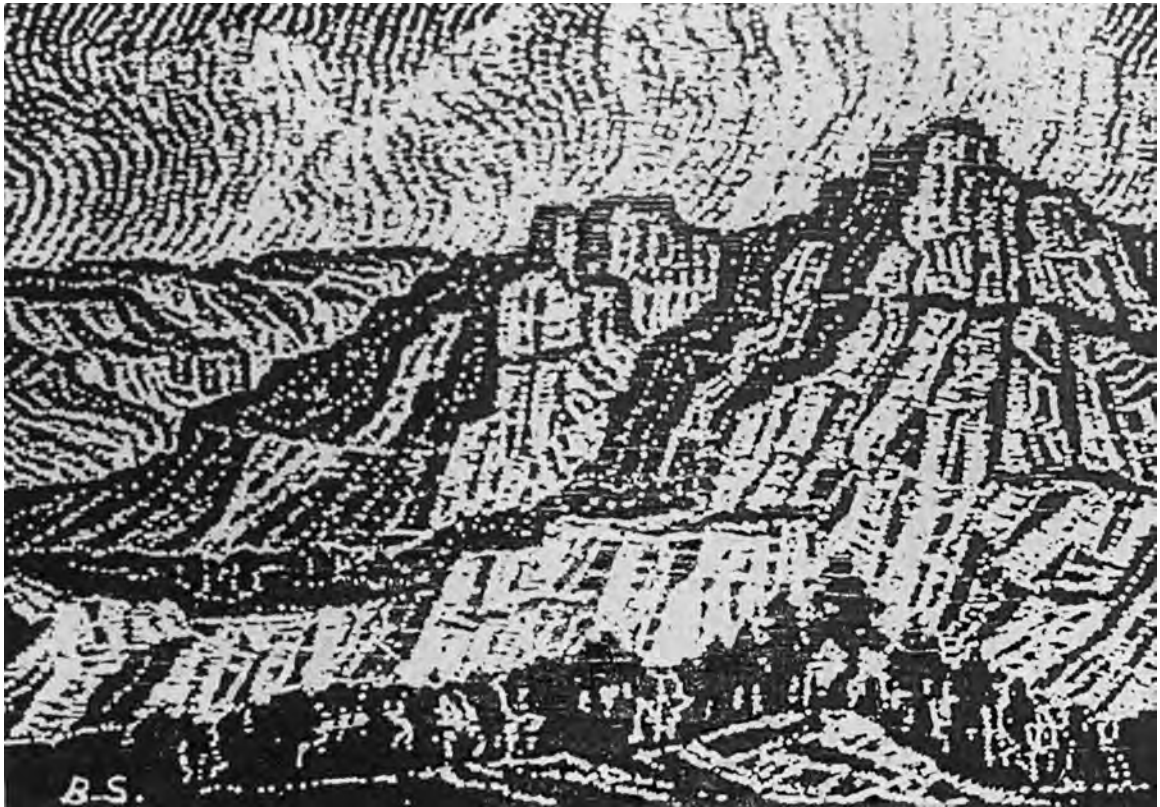
Printer:

Reproduction:

Exhibitions:

Collections: YUAG

Notes: Motif from Buffalo Park, Colorado.



B - 20

Pine and Granite

Date: 1918

Medium: woodcut (nailcut) on paper.

Image Size: 9.75 x 13.875 in., signature in block “B. S.” in lower left.

Editions: 100 impressions, in a single state.

Printer:

Reproduction:

Exhibitions:

Collections:

Notes:



B - 21

Poplars

Date: 1918

Medium: woodcut (nailcut) on paper

Image Size: 6 x 9.125 in., signature in block "B. S." in lower left.

Editions: 100 impressions, in a single state.

Printer:

Reproductions:

Exhibitions:

Collections:

Notes: Motif from Boulder, Colorado



B - 22

Old Tree

Date: 1918

Medium: woodcut (nailcut) on paper.

Image Size: 12.125 x 18 in., signature in block "B. S." in lower right.

Edition: 100 impressions, in a single state.

Printer:

Reproduction:

Exhibitions:

Collections: NYPL, PMA, DtPL, GKM

Notes: Motif from Boulder, Colorado



B - 23

After Sunset

Date: 1918

Medium: woodcut (nailcut) on paper.

Image Size: 6 x 9.125 in., signature in block "B. S." in lower right.

Edition: 100 impressions, in a single state.

Printer:

Reproduction:

Exhibitions:

Collections:

Notes: Motif from Buffalo Park, Colorado



B 024

Pines by the Lake

Alternative Title: *The Pines by the Lake*

Date: 1918

Medium: woodcut (nailcut) on paper.

Image Size: 6 x 8 in., no signature in block.

Edition: 100 prints, in a single state.

Printer:

Reproduction:

Exhibitions:

Collections:

Notes:



B - 25

Two Pines

Date: 1918

Medium: woodcut (nailcut) on paper.

Image Size: 8 x 6 in., no signature in block.

Edition: 100 prints, in a single state.

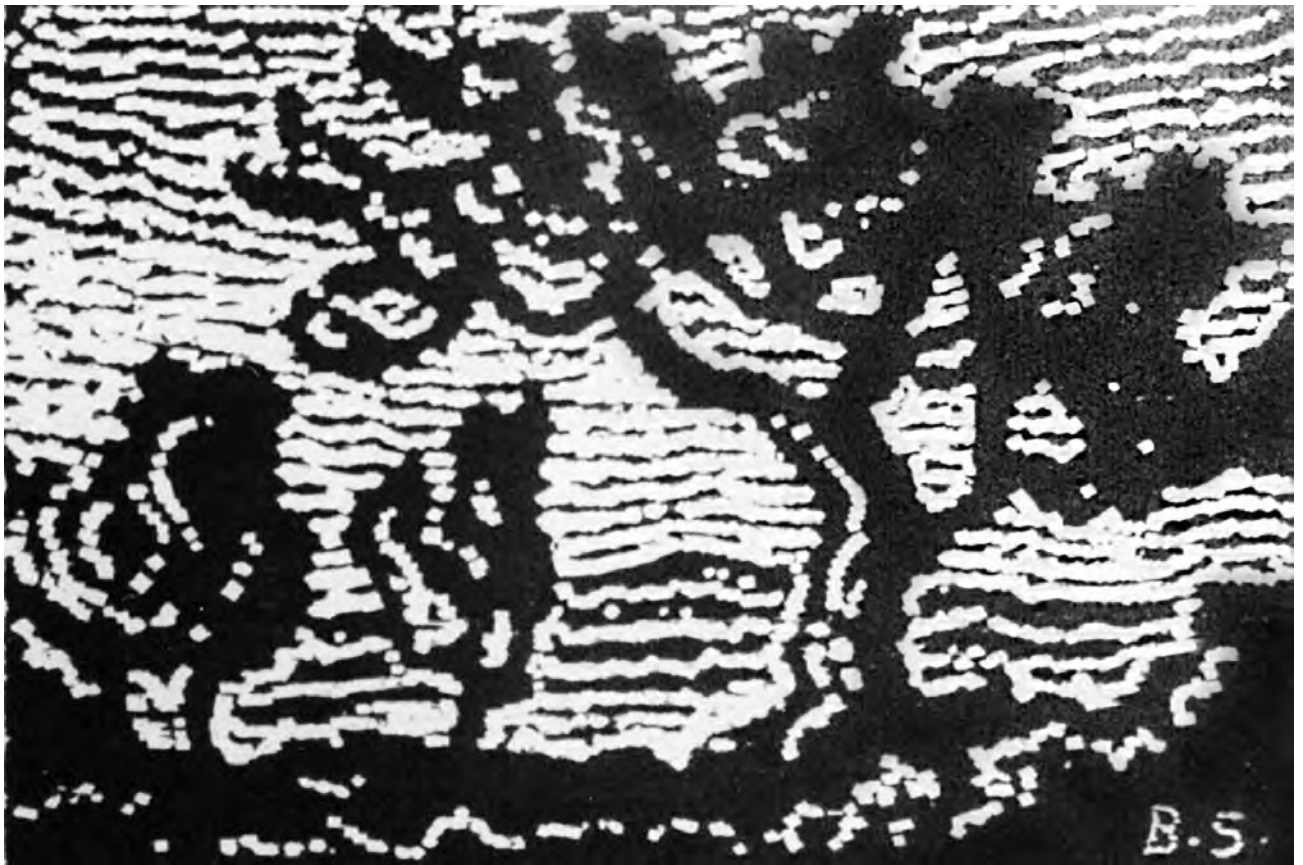
Printer:

Reproduction:

Exhibitions:

Collections:

Notes:



B - 26

Summer Landscape

Alternative Title: *Summer*

Date: 1918

Medium: woodcut (nailcut) on paper.

Image Size: 3.375 x 5 in., signature in block "B. S." in lower right.

Edition: 100 impressions, in a single state.

Printer:

Reproduction:

Exhibitions:

Collections:

Notes:



B - 27

Nocturne

Date: 1918

Medium: woodcut (nailcut) on paper.

Image Size: 3.5 x 5 in., signature in block “B. S.” in lower left.

Edition: 100 impressions, in a single state.

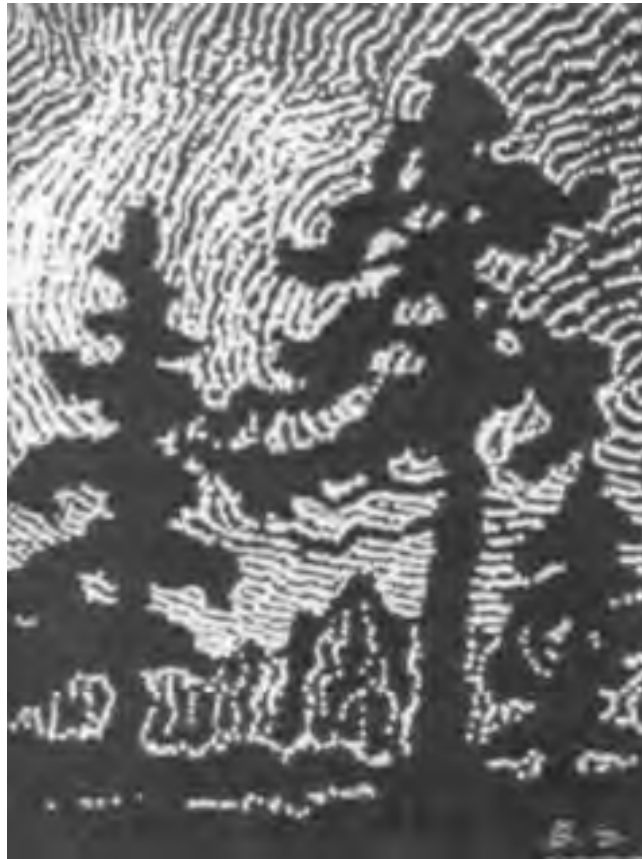
Printer:

Reproduction:

Exhibitions:

Collections:

Notes:



B – 28

Old Pines

Date: 1918

Medium: woodcut (nailcut) on paper.

Image Size: 6.125 x 4.625 in., signature in block “B. S.” in lower right.

Edition: 100 prints, in a single state.

Printer:

Reproduction:

Exhibitions:

Collections:

Notes:



B – 29

Old Cedars

Alternative Title: *Cedars*

Date: 1918

Medium: woodcut (nailcut) on paper.

Image Size: 9 x 12.125 in., signature in block “B. S.” in lower right.

Edition: 100 impressions, in a single state.

Printer:

Reproduction:

Exhibitions:

Collections:

Notes:



B – 30

Aspen Grove

Alternative Titles: *Aspengrove;*
Aspen Grove at Sunset;
Aspengrove After Sunset

Date: 1919

Medium: woodcut (nailcut) on paper.

Image Size: 8 x 6 in., signature in block “B. S.” in lower left.

Edition: 100 impressions, in a single state.

Printer:

Reproduction:

Exhibitions:

Collections:

Notes: Motif from Rocky Mountain National Park (Estes Park) Colorado.
Unknown number printed on green paper



B - 31

Sentinel Pines

Alternative Title: *The Sentinel Pines*

Date: 1919

Medium: woodcut (nailcut) on paper.

Image Size: 12.125 x 18 in., signature in block "B. S." in lower right.

Editions: 100 prints, in a single state.

Printer:

Reproduction:

Exhibitions:

Collections: NYPL, BM, NM, GKM

Notes: Motif from Estes Park, Colorado. "Illustrated in ""Graphic Works""."

American Swedish Historical Museum, Philadelphia;



B – 32

Lake at Sunset

Alternative Title: Lake After Sunset

Date: 1919

Medium: woodcut (nailcut) on paper.

Image Size: 17.125 x 12.25 in., signature in block “B.S.” in lower left.

Edition: 100 impressions, in a single state.

Printer:

Reproductions:

Exhibitions:

Collections:

Notes:



B - 33

In the Heart of the Rockies

Alternative Title: *In the Heart of the Wilderness*

Date: 1919

Medium: woodcut (nailcut) on paper.

Image Size: 17.125 x 12.25 in., signature in block "B.S." in lower right.

Edition: 100 impressions, in a single state.

Printer:

Reproduction:

Exhibition:

Collections:

Notes:



B - 34

At the Timberline

Alternative Titles: *Mountains;*
Timberline Pines

Date: 1919

Medium: woodcut (nailcut) on paper.

Image Size: 12.25 x 17.875, signature in block "B.S." in lower left.

Edition: 100 impressions, in a single state.

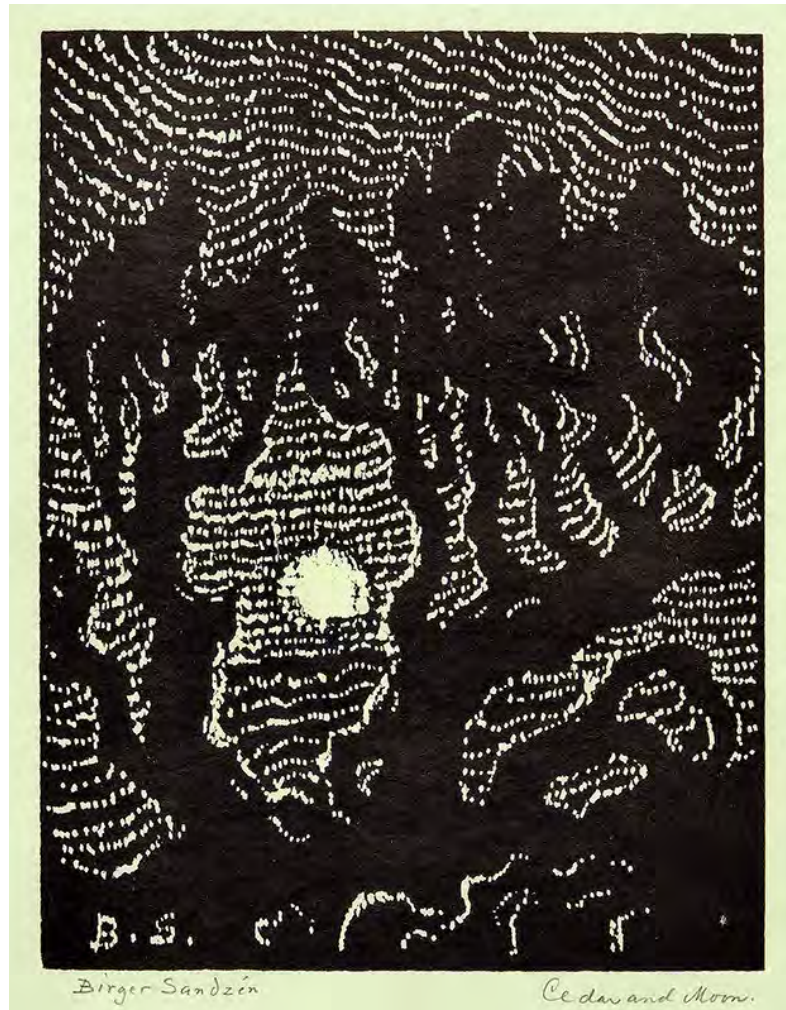
Printer:

Reproduction:

Exhibitions:

Collections:

Notes: Longs Peak, Colorado



B - 35

Title: *Cedar and Moon*

Alternate Titles: *Old Cedar and Moon*
Aspen Grove After Sunset

Date: 1919

Woodcut (nailcut) on paper

One edition of 100 impressions, in a single state

Image Size: 8 x 6 1/8 in.

Block Inscription: B. S. in lower left of image.

Collections: BSMG, SMA



B - 36

Timberline Trees

Alternative Title: *Pines at the Timberline*

Date: 1919

Medium: woodcut (nailcut) on paper.

Image Size: 12 x 9.875 in., signature in block "B.S." in lower left.

Edition: 100 impressions, in a single state.

Printer:

Reproduction:

Exhibition:

Collection:

Notes: "Illustrated in ""Graphic Works"""



B - 37

Sunset on the Smoky River

Alternative Title: *Smoky River at Sunset*

Date: 1920

Medium: woodcut (nailcut) on paper.

Image Size: 6 x 8, signature in block "B.S." in lower right.

Edition: 100 impressions, in a single state.

Printer:

Reproduction:

Exhibitions:

Collections: NM, NAMA,

Notes:

Corcoran Gallery, Washington, DC.



B - 38

The Bent Cedar

Alternative Titles: *Old Cedar;*
The Bent Tree

Date: 1920

Medium: woodcut (nailcut) on paper.

Image Size: 4.5 x 6.125 in., signature in block "B.S." in lower left.

Edition: 100 impressions, in a single state.

Printer:

Reproductions:

Exhibitions:

Collections: NM

Notes: Motif from the Garden of the Gods, Colorado. Printed in July 1923, in ""The Print Connoisseur""."



B - 39

Evening Glow Evening

Alternative Title: *Sunset*

Date: 1921

Medium: woodcut (nailcut) on paper.

Image Size: 5.125 x 7 in., signature in block "B.S." in lower left.

Edition: 100 impressions, in a single state.

Printer:

Reproduction:

Exhibitions:

Collections:

Notes:

American Swedish Historical Museum, Philadelphia



B – 40

Rocks and Hills

Date: 1921

Medium: linoleum cut on paper

Image Size: 6 x 8 in., not signed on the block.

Edition: 100 impressions, in a single state.

Printer:

Reproductions:

Exhibitions:

Collections:

Notes:



B - 41

Lake in the Rockies

Date: 1921

Medium: woodcut (nailcut) on paper.

Image Size: 12 x 10 in., signature in block "B.S." in lower left.

Edition: 100 impressions, in a single state.

Printer:

Reproduction:

Exhibitions:

Collections: NM

Notes: Motif from Jefferson County, Colorado. "Illustrated in ""Graphic Works""."



B - 42

Sunset

Date: 1921

Medium: linoleum cut on paper

Image Size: 9 x 12 in., not signed on the block.

Edition: 100 impressions, in a single state.

Printer:

Reproduction:

Exhibitions:

Collections: NM, FJJMA

Notes: Motif of old pines from Estes Park, Colorado. "Illustrated in ""Graphic Works"". Selling price of print in 1930 was \$6"



B – 43

Several Editions

Rocks, Snow and Pines

Alternative Titles: *Pines, Snow and Rocks*

Pines, Snow and Aspen

Pines, Rocks and Snow

Date: 1921

Medium: linoleum cut on paper.

Image Size: 9 x 12, not signed on the block.

Edition: Several editions in two known states, but cannot be identified.

Printer:

Reproduction:

Exhibitions:

Collections:

Notes: Motif from Rocky Mountain National Park, Colorado.



B - 44

The Great Spires

Date: 1922

Medium: woodcut (nailcut) on paper.

Image Size: 16 x 12 in., signature in block "B.S." in lower right.

Edition: 100 impressions, in a single state.

Printer:

Reproduction:

Exhibitions:

Collections: FJMA,

Notes: Motif from the Garden of the Gods near Colorado Springs, Colorado. "Illustrated in
""Graphic Works"". Reproduced in ""The Woodcut of Today"" by Malcomb C. Salaman, London."
American Swedish Historical Museum, Philadelphia



B - 45

Temple of the Great Spirit

Date: 1922

Medium: woodcut (nailcut) on paper.

Image Size: 16 x 12 in., signature in block "B.S." in lower right.

Edition: 100 impressions, in a single state.

Printer:

Reproduction:

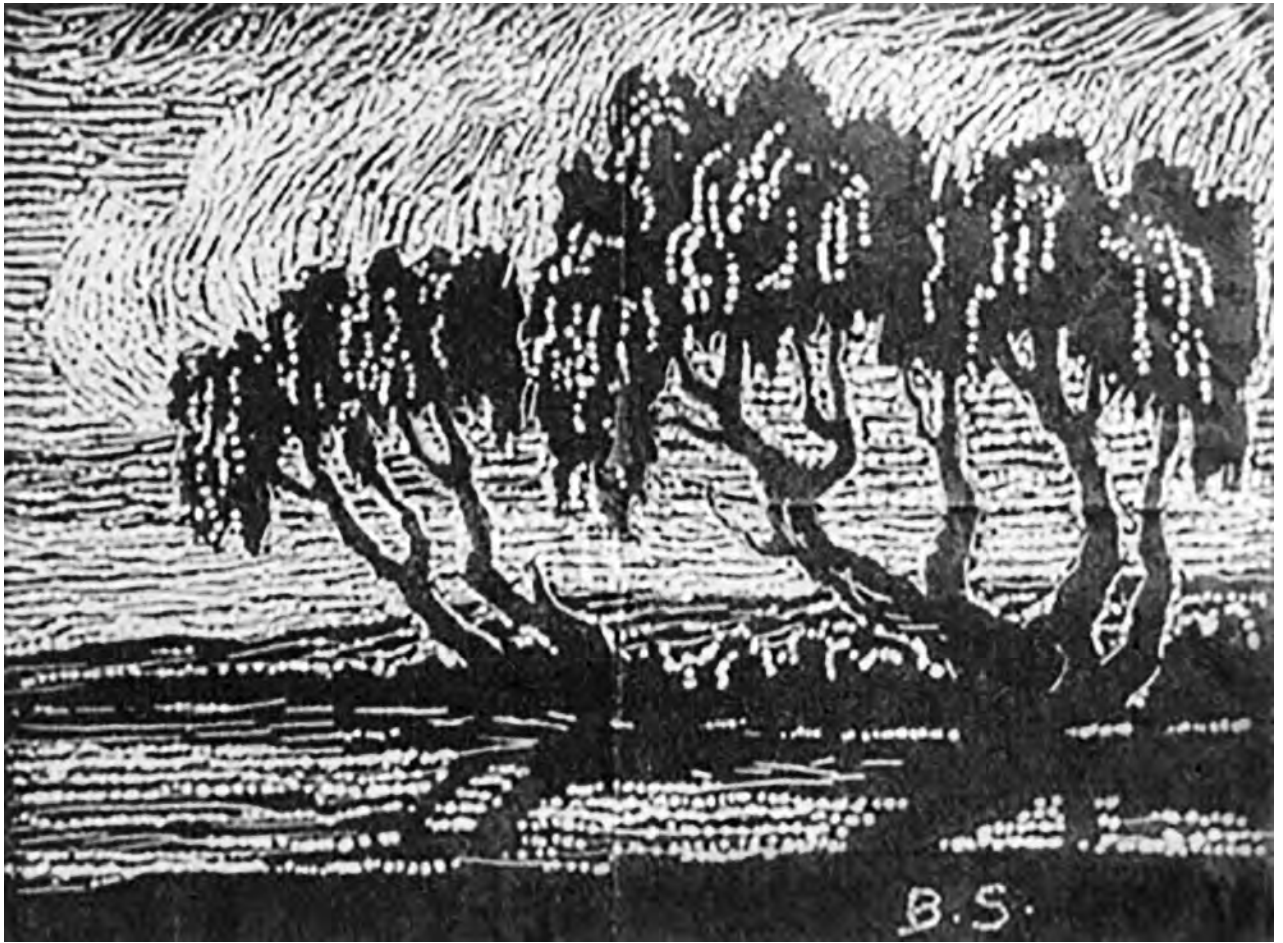
Exhibitions:

Collections: NM, FJJMA

Notes: Motif from Tarryall, Colorado.

"Illustrated in ""Graphic Works""."

American Swedish Historical Museum, Philadelphia ---- I have two versions of this print one in sepia.



B - 46

Toward Evening

Date: 1922

Medium: woodcut (nailcut) on paper.

Image Size: 5.125 x 6.875 in., signature in block "B.S." in lower right.

Edition: 120 impressions, in a single state.

Printer:

Reproduction:

Exhibitions:

Collections:

Notes: "Frontispiece for deluxe copies of ""The Smoky Valley"""



B – 47

Moonrise on the Smoky River

Date: 1922

Medium: woodcut (nailcut) on paper.

Image Size: 6 x 8 in., signature in block “B. S-n” in lower right.

Edition: 100 impressions, in a single state.

Printer:

Reproduction:

Exhibitions:

Collections:

Notes: Trees at center and right with moon (painted over) at left and water in foreground. Moon was painted over with gesso or similar material on this print to cover several dark spots in the original printing.



B - 48

Tree and Rocks

Alternative Title: *Trees and Rocks*

Date: 1925

Medium: linoleum cut on paper

Image Size: 9 x 12 in., signature in block "B.S." in lower right.

Edition: 100 impressions, in a single state.

Printer:

Reproduction:

Exhibitions:

Collections:

Notes: Motif from the Garden of the Gods, Colorado.



B- 049

Timberline Lake

Date: 1925

Medium: linoleum cut on paper

Image Size: 9 x 12 in., signature in block "B. S-n" in lower right.

Edition: 100 impressions, in a single state.

Printer:

Reproduction:

Exhibitions:

Collections: NYPL, BM

Notes: Motif from Rocky Mountain National Park, Colorado.



1ST State



2nd State

B - 50

Glimpse of Blue River

Alternative Title: *Blue River*

Date: 1928

Medium: linoleum cut on paper

Image Size: 4 x 6 in., signature in block "B. S-n" in lower right.

Edition: two editions of 100 impressions, in a single state.

Printer:

Reproduction:

Exhibitions:

Collections:

Notes: Motif from Manhattan, Kansas "First State titled ""Glimpse of Blue River"" and second state was titled ""Blue River.""



B 051

Smoky River at Twilight

Alternative Title: *Smoky River at Moonrise*

Date: 1928

Medium: linoleum cut on paper

Image Size: 9 x 12 in., signature in block "B. S-n" in lower right.

Edition: two editions of 100 impressions, single state

Printer:

Reproduction:

Exhibitions:

Collections: BM

Notes: "Motif of an "early moon." From the Smoky Hill River near Lindsborg." "Illustrated in "Graphic Works". Selling price of print in 1930 was \$6"



B - 52

Summertime

Date: 1928

Medium: linoleum cut on paper. Printed on handmade Swedish Örebro paper.

Image Size: 9 x 12 in., signature in block “B. S-n” in lower left.

Edition: 100 impressions, single state.

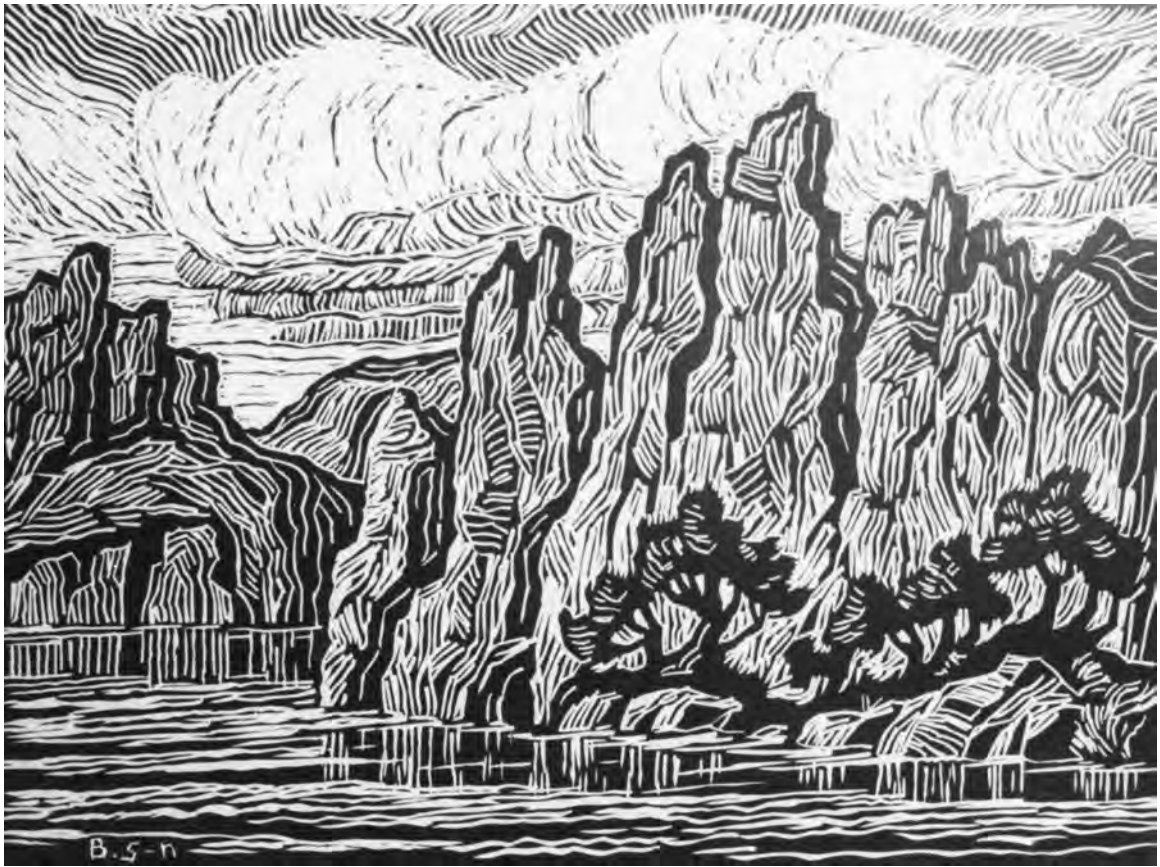
Printer:

Reproduction:

Exhibitions:

Collections: BM

Notes: Motif from the Smoky River.



B - 53

Dream Canyon

Alternative Titles: *Dream Lake*

Boulder Canyon

Date: 1928

Medium: linoleum cut on paper. Printed on handmade Swedish Örebro paper.

Image Size: 9 x 12 in., signature in block "B. S-n" in lower left.

Edition: 100 impressions, single state.

Printer:

Reproduction:

Exhibitions:

Collections: BM

Notes: Motif of Grand Canyon near Moab, Utah. Selling price of print in 1930 was \$6



B - 54

Crystal Lake

Alternative Title: *A Mountain Lake*

Date: 1928

Medium: woodcut (nailcut) on paper. Engraved on hardwood, presented by Yvonne Bannelier. Printed on handmade Swedish Örebro paper.

Image Size: 6 x 7.75 in., signature in block “B. S-n” in lower left.

Edition: two editions of 100 impressions, single state.

Printer:

Reproduction:

Exhibitions:

Collections:

Notes: Motif from Colorado.



B - 55

River Nocturne

Date: 1928

Medium: woodcut (nailcut) on paper.

Image Size: 5.125 x 7 in., signature in block "B. S-n" in lower right.

Edition: two editions of 100 impressions, single state.

Printer:

Reproduction:

Exhibitions:

Collections:

Notes: River motif as sunset. "Illustrated in ""Graphic Work"". Reproduced in book, ""The New Woodcut"" by M. C. Solomon, 1930."



B - 56

Golden Clouds

Date: 1928

Medium: woodcut (nailcut) on paper

Image Size: 5.375 x 3.875 in., signature in block "B. S-n" in lower right.

Edition: 100 impressions, single state.

Printer:

Reproduction:

Exhibition:

Collection:

Notes: Motif from Rocky Mountain National Park in Colorado
Selling price of print in 1930 was \$2.50"

"Illustrated in ""Graphic Work"".



B - 57

Veteran Pines

Date: 1928

Medium: woodcut (nailcut and traditional) on paper. Printed on handmade Swedish Örebro paper.

Image Size: 3.875 x 5 in., signature in block "B. S-n" ("S" is printed backward) in lower right.

Edition: two editions of 100 impressions, single state.

Printer:

Reproduction:

Exhibitions:

Collections:

Notes:



B - 58

Several Editions

Prairie Pond

Date: 1928

Medium: linoleum cut on paper. Printed on handmade Swedish Örebro paper.

Image Size: 9 x 12 in., signature in block “B. S-n” in lower right.

Edition: several editions, single state.

Printer:

Reproduction:

Exhibitions:

Collections: MNM

Notes: Motif from near Lindsborg, Kansas (McPherson County) Selling price of print in 1930 was \$6



1st State



2nd State



3rd State



4th State

B - 59

Sunshine Lake

Date: 1928

Medium: linoleum cut on paper.

Image Size: 6 x 9 in., signature in block "B. S-n" in lower left.

Edition: three editions of 100 impressions, in four states.

Printer:

Reproduction:

Exhibitions:

Collections:

Notes: Motif from Rocky Mountain National Park, Colorado. Selling price of print in 1930 was \$4.50



1st State



2nd State



3rd State



4th State

B - 60

Blue Valley Farm

Date: 1929

Medium: linoleum cut on paper.

Image Size: 9 x 12 in., signature in block "B. S-n" in the lower left.

Edition: seven editions totaling at least 600 impressions, in four states.

Printer:

Reproduction:

Exhibition:

Collections: BM,

Notes: Motif of a farm house near Randolph, KS. The original townsite of Randolph was located where Tuttle Creek Reservoir now is and the house is now underwater. Owned by the Webber family. "First state printed in 1929. Second in an edition of 100 in 1934, as a Finnish Relief Fund print in 1940 and in an edition of 50 in 1948 (illustrated in ""Graphic Works""). The third state was printed in 1948. The fourth state was printed in 1949. (refer to ""Graphic Works""). Selling price of print in 1930 was \$6. The original farmhouse was located near Randolph, Kansas and was owned by the Webber family. The steeple was made of galvanized metal - it was used as a vent for the kitchen cookstove."

American Swedish Historical Museum, Philadelphia; Boise Art Museum ← no know abbreviation



1st State
State



2nd



3rd State

B – 61

Smoky Valley Homestead

Date: 1929

Medium: linoleum cut on paper.

Image Size: 9 x 12 in., signature in block “B. S-n” in lower left.

Edition: three editions totaling 250 impressions, in three states.

Printer:

Reproduction:

Exhibitions:

Collections: BM

Notes: Illustrated in ""Graphic Works"". A third printing of 50 was completed in 1948."



B - 62

Houses by the Canal

Date: 1929

Medium: linoleum cut on paper.

Image Size: 9.125 x 12.125 in., signature in block "B. S-n" in lower right.

Edition: 100 impressions, single state.

Printer:

Reproduction:

Exhibitions:

Collections: FJMA

Notes: Motif from near Logan, Utah. Selling price of print in 1930 was \$6

B 063 Book plate for Mrs. L. M. (Alice C.) Sackett of Oklahoma City, OK
linoleum cut on paper One edition of 50 prints in a single state.

1930

A copy of this print has never been located. Sandzén appears to have sent this print to Mrs. L. M. (Alice C.) Sackett on March 2, 1930. Her address was 1215 W. 32nd St., Oklahoma City, OK



1st State



2nd State

B - 64

Willow Pond

Alternative Title: *The Willow Pond*
Pond with Willows
Willow Island

Date: 1930

Medium: linoleum cut on paper.

Image Size: 5.875 x 9 in., signature in block “B. S-n” in lower left.

Edition: 100 impressions, in two states.

Printer:

Reproduction:

Exhibitions:

Collections:

Notes:



1st State



2nd State

B - 65

The Silent Stream

Alternative Titles: *Silent Stream*
Silent Waters

Date: 1930

Medium: woodcut on paper. Carved on hard wood.

Image Size: 5.125 x 3.5 in., signature in block "B.S-n ("S" is backward) in lower right.

Edition: 100 impressions, in two states.

Printer:

Reproduction:

Exhibitions:

Collections:

Notes: Selling price of print in 1930 was \$1 (special price). The second state of this print was printed on clay-coated paper.



1st State



2nd State

B - 66

Willow and Cottonwood

Date: 1931

Medium: linoleum cut on paper.

Image Size: 9 x 12.125 in., signature in block "B. S-n" in lower right.

Edition: five editions of 100 impressions, in two states.

Printer:

Reproduction:

Exhibitions:

Collections:

Notes: Motif from the Smoky Hill River a mile east of Lindsborg. "Illustrated on the cover of ""Graphic Work"". The second state was printed in 1934 in one edition of 100. Selling price of print in 1930 was \$6."



1st State



2nd State



4th State

B - 67

Sunshine Creek

Date: 1931

Medium: linoleum cut on paper.

Image Size: 12 x 18 in., signature in block "B. S-n" in lower right.

Edition: seven editions totaling 600 impressions, in five states.

Printer:

Reproduction:

Exhibitions:

Collections: NAMA,

Notes: Motif from Wild Horse Creek in Graham County, Kansas "Illustrated in ""Graphic Work"". First edition issued with 50 prints. Second state was completed in 1934 in one edition of 100 prints. Third state completed in 1935 in one edition of 100 prints. Edition of 50 prints issued in 1951. The last two states come from unknown dates."

American Swedish Historical Museum, Philadelphia



B - 68

Brook with Poplars

Date: 1932

Medium: linoleum cut on paper.

Image Size: 5 x 4.5 in., signature in block "B. S-n" in lower left.

Edition: several editions totaling over 200 impressions, in one state.

Printer:

Reproduction:

Exhibitions:

Collections: FJMA

Notes: Motif from Logan, Utah. Used for the Bookshelf-Bulletin of the Girl Reserve advisors of the Y.W.C.A., New York. Also used for 200 calendars in 1937. Selling price of print in 1930 was \$1 (special price)

Museum of Fine Arts, St. Petersburg, FL



B - 69

Creekbank

Date: 1932

Medium: linoleum cut on paper.

Image Size: 12 x 8.875 in., signature in block “B. S-n” in lower right.

Edition: two editions totaling 160 impressions, in one state.

Printer:

Reproduction:

Exhibitions:

Collections:

Notes: Motif from Wild Horse Creek in Graham County, Kansas Reprinted in one edition of 60 in 1950. Selling price of print in 1930 was \$6.



1st State



2nd State

B - 70

Old Powder House

Alternative Titles: *Old Powder House, Central City*

The Old Powder House

Old Reservoir, Central City

Old Reservoir

Date: 1933

Medium: linoleum cut on paper.

Image Size: 8.875 x 11.875 in., signature in block "B. S-n" in lower right.

Edition: 100 impressions, in two states.

Printer:

Reproduction:

Exhibitions:

Collections: NAMA

Notes: "Motif of a stone building that was used for many years by miners to hold their supply of explosives. In 1952, Sandzén wrote in letter to Mrs. Wagoner (March 5, 1952) that he had been told ""the old ""Powder House"" is now a gift shop."" ""Illustrated in ""Graphic Work""."



B - 71

Coxcombs

Date: 1933

Medium: linoleum cut on paper.

Image Size: 9 x 12 in., signature in block "B. S-n" in lower right of center.

Edition: 100 impressions, single state.

Printer:

Reproduction:

Exhibitions:

Collections:

Notes: Still-life "Illustrated in ""Graphic Work"". Selling price of print in 1930 was \$6"



B - 72

Kansas Sunflowers

Date: 1933

Medium: linoleum cut on paper.

Image Size: 12 x 8.875 in., signature in block "BS" in lower left.

Edition: five editions of 100 impressions, in a single state.

Printer:

Reproduction:

Exhibitions:

Collections:

Notes: "Illustrated (vertically) in ""Graphic Work"". Print has been printed in vertical and horizontal formats. Horizontal format was titled ""Sunflowers"". Original edition of 100 was printed vertically. Late editions printed horizontally."

Rosewell Museum and Art Center



1st State



2nd State

B - 73

Poplars at Moonrise

Alternative Titles: *Poplars and Moonrise*

Utah Poplars

Date: 1933

Medium: linoleum cut on paper.

Image Size: 12 x 8.875 in., signature in block "B S" in lower left.

Edition: two editions of 100 impressions, in two states.

Printer:

Reproduction:

Exhibitions:

Collections: NAMA, FJMA

Notes: Motif from Logan, Utah Printed 100 proofs of the second state in 1933. Selling price of print in 1930 was \$6.



B - 74

Rhythm of the Wilderness

Date: 1934

Medium: linoleum cut on paper.

Image Size: 8.875 x 11.875 in., signature in block "B S-n" in lower right.

Edition: 100 impressions, in a single state.

Printer:

Reproduction:

Exhibitions:

Collections: NAMA

Notes: "Illustrated in ""Graphic Work""."



B - 75

Pond with Cottonwood Trees

Alternative Titles: *Brook with Cottonwood Trees*

Brook with Cottonwoods

Date: 1934

Medium: linoleum cut on paper.

Image Size: 7.125 x 8.875 in., signature in block “B S-n” in lower right.

Edition: three editions of 100 impressions, in a single state.

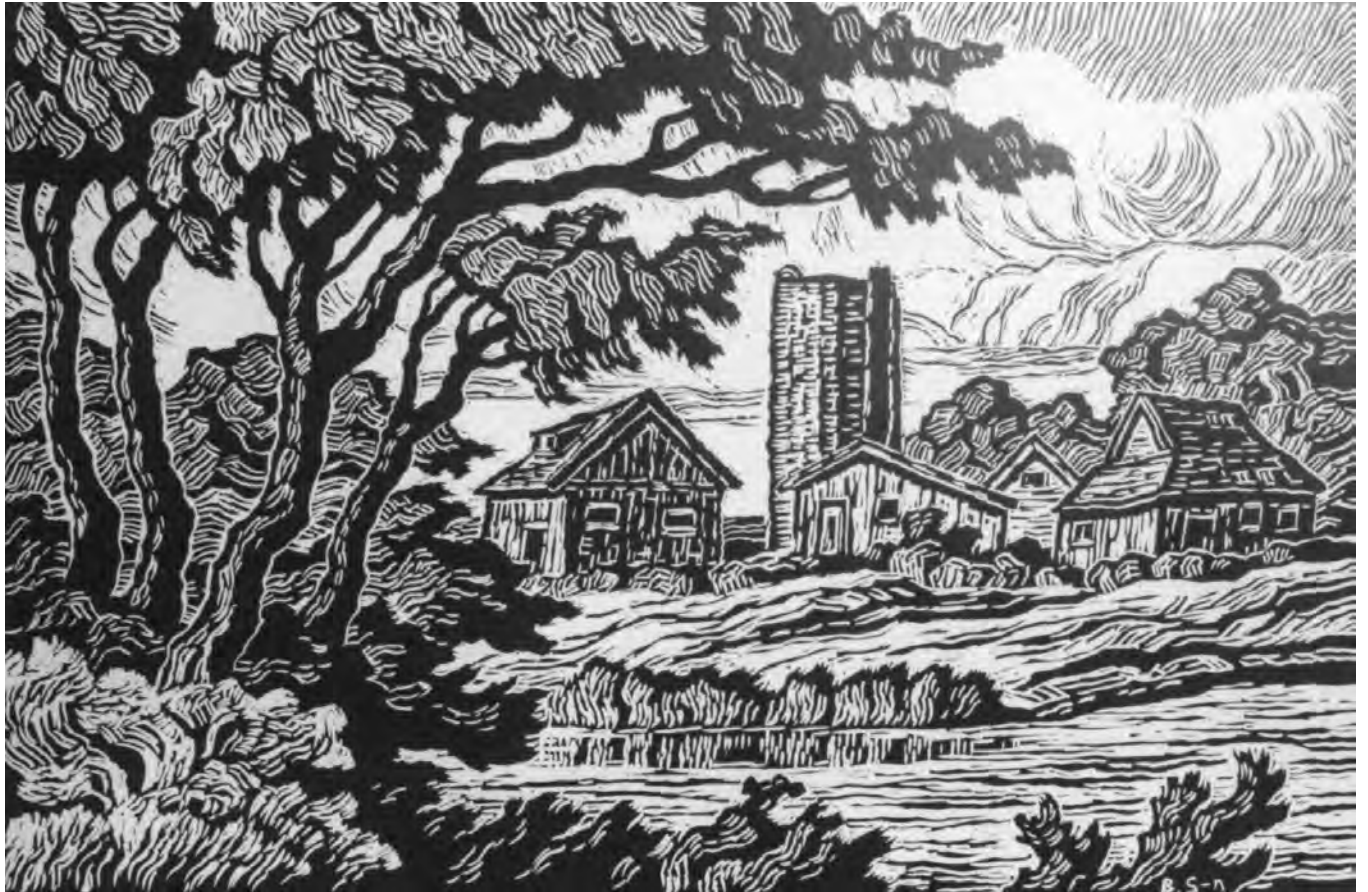
Printer:

Reproduction:

Exhibitions:

Collections:

Notes: Reprinted in 1941 and 1944.



B - 76

An Old Kansas Farm

Alternative Title: *Kansas Farm*

Date: 1934

Medium: linoleum cut on paper.

Image Size: 12 x 17.875 in, signature in block "B S-n" in lower right.

Edition: two editions of 100 impressions, in two states.

Printer:

Reproduction:

Exhibitions:

Collections:

Notes:



B - 77

A Kansas Landscape

Alternative Titles: *Farm on the Smoky*
Smoky Valley Farm
Kansas Landscape
Kansas Farm

Date: 1935

Medium: linoleum cut on paper.

Image Size: 6.5 x 9 in., signature in block "B S-n" in lower right.

Edition: five editions of 100 impressions, three states.

Printer:

Reproduction:

Exhibitions:

Collections:

Notes: "Second state completed in an edition of 100 prints. 2nd state titled ""Farm on the Smoky."" 3rd state titled ""A Kansas Landscape"" (on clay-coated paper)."



1st State



2nd State

B 078

Several Editions

Kansas Creek Kansas Stream

Alternative Title: *A Kansas Creek*

Date: 1936

Medium: linoleum cut on paper.

Image Size: 6 x 8.875 in., signature in block "B S-n" in lower right.

Edition: several editions of prints, in two states.

Printer:

Reproduction:

Exhibitions:

Collections:

Notes: "Reprinted 200 prints in 1950 for the School of Home Economics at Kansas State Univerisity. Woman brought in unsigned copies of this block print on a tan paper with slight up and down crossing textures - she said the owner purchased the prints at an auction many years ago."



1st State



2nd State

B - 79

River Sunset

Date: 1936

Medium: linoleum cut on paper.

Image Size: 9 x 12 in., signature in block "B S-n" in lower right.

Edition: two editions of 100 impressions, in two states.

Printer:

Reproduction:

Exhibitions:

Collections:

Notes: "Illustrated in ""Graphic Work"""



B - 80

Several Editions

Pond with Willows

Alternative Titles: *Pasture with Willows*

Prairie Stream

Brook with Willows

Date: 1937

Medium: linoleum cut on paper.

Image Size: 6 x 7.75 in., signature in block "B S-n" in lower right.

Edition: several editions of prints, in one state.

Printer:

Reproduction:

Exhibitions:

Collections:

Notes: "Reprinted as ""Prairie Stream"" in an edition of 100."



B - 81

Several Editions

Hills and Cottonwood Trees

Hills and Trees

Pond with Cottonwood Trees

Pond with Cottonwood

Hills and Cottonwood

Pond with Trees

Date: 1937

Medium: linoleum cut on paper.

Image Size: 6 x 8 in., signature in block "B S-n" in lower right.

Edition: several editions of prints in one state.

Printer:

Reproduction:

Exhibitions:

Collections:

Notes:



B - 82

Unsigned

Untitled

Date: 1937

Medium: linoleum cut on paper.

Image Size: 4 x 6 in., signature in block "B S-n" in lower right.

Edition: 200 impressions, single state.

Printer:

Reproduction:

Exhibitions:

Collections:

Notes: Print unsigned and untitled. Completed for the Preconvention Conference of American Home Economics Association.



B - 83

Unknown Edition

Hillside Creek

Alternative Title: *The Friendly Creek*

Date: 1938

linoleum cut on paper.

Image Size: 5.25 x 4.25 in., signature in block "B S-n" in lower right of center.

Edition: edition size unknown, single state.

Printer:

Reproduction:

Exhibitions:

Collections:

Notes: Used for the American Block Print Calendar



B - 84

Unknown Edition

Smoky Hill River

Date: 1938

Medium: linoleum cut on paper.

Image Size: 6 x 7.75 in., signature in block "B S-n" in lower right.

Edition: edition size unknown, single state.

Printer:

Reproduction:

Exhibitions:

Collections:

Notes: P.E.O. print in 1941. On clay-coated paper. Woman brought in unsigned copies of this block print on a tan paper with slight up and down crossing textures - she said the owner purchased the prints at an auction many years ago.



B - 85

Untitled (Organization Print)

Date: 1938

Medium: linoleum cut on paper.

Image Size: 4.375 x 6 in

Edition: 200 impressions, single state.

Printer:

Reproduction:

Exhibitions:

Collections:

Notes: Organization Print



B - 86

Prairie Stream Pond with Willows

Date: 1939

Medium: linoleum cut on paper

Image Size: 9 x 12 in., signature in block "B. S-n" in lower left.

Edition: four editions totaling 410 impressions, two states.

Printer:

Reproduction:

Exhibitions:

Collections: FJMA

Notes: First state edition of 60 was destroyed. Print was reprinted in 1943, reprinted in 1945 in an edition of 100, reprinted in 1950 in an edition of 100 and reprinted in 1951 in an edition of 50.



1st State

B - 87

River Solitude

Date: 1941

Medium: linoleum cut on paper.

Image Size: 15.125 x 19.875 in., signature in block "B. S-n" in lower right.

Edition: 100 impressions, single state.

Printer:

Reproduction:

Exhibitions:

Collections:

Notes:



1st State



2nd State

B - 88

Toward Evening

Date: 1942

Medium: linoleum cut on paper

Image Size: 9 x 12 in., signature in block "B. S-n" in lower right.

Edition: two editions of 100 impressions and one of 50 impressions, two states.

Printer:

Reproduction:

Exhibitions:

Collections:

Notes: Print was reprinted in 1951 in an edition of 50.



1st State



2nd State

B - 89

Republican River

Alternative Title: *Saline River*

Date: 1945

Medium: linoleum cut on paper.

Image Size: 12.125 x 16 in., signature in block "B. S-n" in lower right.

Edition: two editions of 100 impressions, two states.

Printer:

Reproduction:

Exhibitions:

Collections:

Notes: Corcoran Gallery, Washington D.C. "First state was titled ""Republican River"" and second state was titled ""Saline River"". The second state was printed in an edition of 100 in 1947."



1st State



2nd State



3rd State

B - 90

In the Foothills

Date: 1945

Medium: linoleum cut on paper.

Image Size: 12.125 x 16 in., signature in block “B. S-n” in lower right.

Edition: two editions of 100 impressions, three states.

Printer:

Reproduction:

Exhibitions:

Collections:

Notes:



B - 91

Trees and River

Date: 1946

Medium: linoleum cut on paper.

Image Size: 8.625 x 12 in., signature in block "B. S-n" in lower right.

Edition: 100 impressions, single state.

Printer:

Reproduction:

Exhibitions:

Collections:

Notes:



B - 92

The Brook

Alternative Titles: *Brook with Cottonwood Trees*
Pond with Cottonwood Trees

Date: 1946

Medium: linoleum cut on paper.

Image Size: 4.375 x 6 in., signature in block “B. S-n” in lower right.

Edition: 100 impressions, one state.

Printer:

Reproduction:

Exhibitions:

Collections:

Notes:



B - 93

Glimpse of Smoky River

Date: 1948

Medium: linoleum cut on paper.

Image Size: 8.625 x 12 in., signature in block "B. S-n" in lower left.

Edition: two editions of 100 impressions and one of 50 impressions, one state.

Printer:

Reproduction:

Exhibitions:

Collections:

Notes: Reprinted in 1951 in an edition of 50.



B - 94

Colorado Stream

Date: 1952

Medium: linoleum cut on paper.

Image Size: 6.125 x 4.5 in., signature in block "B. S-n" in lower right.

Edition: one edition of 1100 impressions, single state.

Printer:

Reproduction:

Exhibitions:

Collections:

Notes: "Inserted cut for ""Kansas Magazine"" Booklet, ""Graphic Work of Birger Sandzén"", in an edition of 1100. 1000 for public (issued with Booklet)."