

November 5, 2017, through January 14, 2018

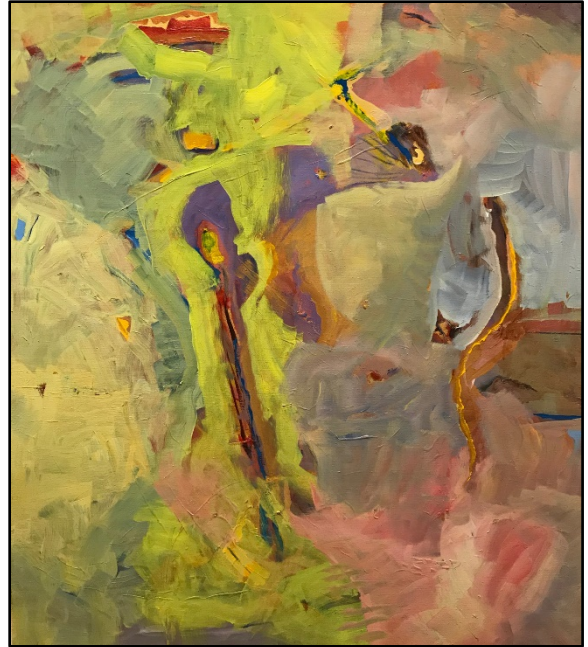
# *Line and Color: The Music of My Life*

paintings by  
**Rich Thibodeau**  
of Marquette, Kansas

## Statement

I think of my work in simple terms -- line and color. I endeavor to give my line integrity. By accident or design, I look for rare color to employ in a painting.

I invite you to follow a line, any line and enjoy the color along the way.



*Winter Playground 2013* by Rich Thibodeau

## Biography

I was born in Stoneham, Massachusetts, raised on a small family farm in Danville, New Hampshire. Attended a private college prep school, Sanborn Seminary. After a tour of duty with the US Army (1957-58) my early work experience was in banking, credit and employment businesses in Riverside, CA and Flagstaff, AZ. I retired from business in 1970 to pursue an abiding passion for the visual arts. I attend Northern Arizona University as an undergraduate and did graduate studies at Highlands University. Since that time I have owned art related businesses such as galleries and a frame shop in Santa Fe, New Mexico. I continue to curate exhibitions, instruct in the visual arts, and for the most part -- paint. I've been "dad" to four talented and lovely daughters.

Rich Thibodeau

### EDUCATION:

Sanborn Seminary, (High School) Kingston, NH 1954  
Peter Zurek, Butzbach, Germany, 1957 - 1958, painting tutor  
Alfredo Zalce, Morella, Mexico, 1962 - 64, apprentice, murals  
Northern Arizona University, Flagstaff, AZ, 1970 - 74 B.F.A. (Cum Laude) Painting and Printmaking  
Highlands University, graduate studies, painting, Las Vegas, NM  
Attended workshops by Sam Scott, David Barbero, and Bill Gersh

### ART RELATED BUSINESSES & ACTIVITIES:

Galeria 27, Morella Mexico, 1963, (co-op gallery) Director  
Hull House Gallery, Jerome, AZ, 1967 - 70, Co-owner  
Upstairs Art Gallery, Flagstaff, AZ, 1969 - 74, Co-owner  
Advocates for Contemporary Art, Santa Fe, NM, 1975 - 78, Co-chair.  
New Mexico Arts Commission, grants panel, 1975 - 76  
Canyon Road Assoc., Santa Fe, NM, 1977 - 78, President  
Plum Tree Gallery and Frame Shop, Santa Fe, NM, 1975 - 82, Owner  
Plum Tree Workshops, Pilar, NM, 1982 - 96 Director and Instructor  
Lovewell Studios, Superior, NE. 1997- 02, Director and Instructor

ArtSpace, Lindsborg, KS, 2002 - 05, Curator and Owner  
ArtSpace, Marquette, KS. 2003 - , Curator and Owner

#### SOLO EXHIBITIONS:

##### Massachusetts

Mural, Stoneham 1939  
Mural, Woburn, 1958

##### Arizona

Northern Arizona University, Flagstaff, 1974  
Mural, Upstairs Art, Flagstaff, 1974

##### New Mexico

Highlands University, Las Vegas, 1974-75

##### Kansas

Watson Gallery, Salina, 2009  
Salina Country Club (3 X), 2000s  
Capers, Salina, 2003, 2005  
Norris Furniture, Salina, 2007 - 2010  
Offices That Work, Topeka, 2011

##### Germany

Mural, Butzbach, 1958

#### GROUP EXHIBITIONS

##### Mexico

Galeria 27, Morelia, 1963  
Mural, Mexico City, 1963

##### Arizona

Hull House Gallery, Jerome, 1968  
Upstairs Art, Flagstaff, 1968-74  
Northern Arizona University, Flagstaff, 1973

##### New Mexico

Plum Tree Gallery, Santa Fe, 1976-1980  
Museum of Fine Arts, Santa Fe, 1977, 1984, 1995  
Armory for the Arts, Santa Fe, 1977, 2014

##### Nebraska

Lovewell Studios, Superior, 1999-2002

##### Kansas

ArtSpace, Lindsborg, 2001-2004  
ArtSpace, Marquette, 2003-to present  
Capers, Salina, 2005  
Trish Higgins Fine Art, Wichita, 2000  
Gallery 7, Hutchinson, 2011  
Lincoln Art Center, Lincoln, 2006, 2009



*Birger Sandzén*

- MEMORIAL GALLERY -

401 N. First Street, PO Box 348, Lindsborg, KS 67456

(785) 227-2220 [fineart@sandzen.org](mailto:fineart@sandzen.org) [www.sandzen.org](http://www.sandzen.org)

Gallery Hours: Tuesday through Saturday from 10 a.m. to 5 p.m. and Sunday, 1 to 5 p.m.