

Kansas Scenic Byways Invitational

an exhibition featuring
Scenic Byway-inspired works
by regional artists

January 19 through March 15, 2020



Birger Sandzén
MEMORIAL GALLERY

Exhibiting Artists

James Borger, Andover	Susan Lynn, Rochport, MA
Eldon Clark, Minneapolis	Justin Marable, Lawrence
Louis Copt, Lawrence	Angela Muller, Russell
Priti Cox, Salina	Doloris Pederson, Hays
Carol Davis, Wichita	Marguerite Perret, Topeka
Jenny Davis, Lindsborg	Stephen Perry, Wichita
Michael Duane, Overland Park	Randy Regier, Kansas City
Noah Flores, Marquette	Matthew Richter, McPherson
Andrea Fuhrman, Abilene	Angie Schafer, McPherson
Sue Godwin, McPherson	Dennis Schiel, Hays
Hugh Greer, Wichita	Larry Schwarm, Wichita
Marco Hernandez, Wichita	Dee Erway Sherwood, McPherson
Patricia Ann Herndon, Dighton	Virginia Grass Simmons, Wichita
Brian Hinkle, Wichita	Paula Smith, Andover
Cally Krallman, Topeka	Richard Sneary, Kansas City
Oscar Larmer, Manhattan	Leon Staab, Hays
Kevin Lundy, Wilson	

Introduction and Acknowledgements

The Birger Sandzén Memorial Gallery is honored to present the *Kansas Scenic Byways Invitational* – an exhibition featuring artwork developed with the Kansas Scenic Byways system as inspiration. Sandzén loved traveling throughout the state – sketching and often painting what he saw. His finished works capture areas around the



Coronado Heights by Birger Sandzén,
1952, oil on board, 20 x 24,
Greenough Collection,
Birger Sandzén Memorial Gallery

Smoky Valley, Western Kansas, and elsewhere in the state. Simply put, Kansas is filled with wonderful and breathtaking scenery and the Byways program helps to celebrate it. There are twelve recognized byways (which are detailed at www.travelks.com/ksbyways/). Nine of them are scenic (two being designated “National Scenic Byways”) and three are historic trails. The Byways are a component of the National Scenic Byways Program, and both “seek to identify and designate national scenic byways to increase tourism and educate the traveling public about our environment, history and culture.”

Similar to other invitationals, the idea for this one percolated out of one of the Gallery’s quarterly show committee meetings. Maleta Forsberg gets credit for introducing the idea, and the rest of the committee enthusiastically jumped on board. Forsberg lives adjacent to the Prairie Trail Scenic Byway, which goes from Canton to Ellsworth, and she has developed artworks from its rich resources for many years. Needless to say, the program is close to her heart.

After establishing the theme, each show committee member was asked to select five artists they would like to see in the show. Committee members were not eligible to participate this time, nor were artists selected for the prior self-portrait invitational of 2016. Those invited needed to base their works on one or more of the designated Byways. Their imagery could come directly from the landscape or indirectly from personal experiences of the various areas. Thus, this exhibition is the result of each artist’s vision, ability, and perseverance to create a work that would be true to the exhibition’s intent. I hope you enjoy it!

Many thanks are in order for this invitational. Foremost, thank you to the participating artists – they made it happen. Extended thanks also to Sue Schlegel for her support and for securing a generous grant from the Kansas Department of Wildlife, Parks, and Tourism. Colby Terry and Bridgette Jobe helped process the grant and made it possible for us to print the exhibition catalog.

Thanks also to the members of the show committee: Cary Brinegar, Wayne Conyers, Maleta Forsberg, Eleanor Heimbaugh, Mick Jilg, Elizabeth Liljegren, Cori Sherman North, Karla Prickett, Rose Marie Wallen, and Dave Woolard. Finally, thanks to the Gallery staff, board, volunteers, and to all who support the Gallery’s exhibitions and activities.

Ron Michael, Director



James Borger
Andover, KS

Konza Awakening
2019, acrylic on canvas,
24 x 30 inches

From the Flint Hills
National Scenic Byway.
The painting is from
inside the Konza Prairie
Biological Station, just
south of Manhattan.



Eldon Clark, Jr.
Minneapolis, KS

Worth the Climb
2015, photograph,
23.5 x 15.5 inches

From Coronado Heights, along the
Prairie Trail Scenic Byway.



Louis Copt
Lecompton, KS

Flames at Moonrise
2019, oil on canvas,
34 x 70 inches

This particular scene is near Lake Kahola, south of Council Grove but north of Strong City, along the Flint Hills National Scenic Byway.

Priti Gulati Cox
Salina, KS

Walking on Stolen Land
(includes a meal-design brought to you by *Discomfort Foods*)
2019, mixed media
From the Flint Hills National Scenic Byway, Council Grove.



Carol Davis
Wichita, KS

Santa Fe Railroad Bridge
2019, watercolor

From the Flint Hills
National Scenic Byway,
one mile east of Strong
City on Hwy 177.



Jenny Davis
Lindsborg, KS

What she loved most about living in Kansas were the breathtaking sunrises. And in the Flint Hills the rugged beauty of the land complemented them perfectly
2019, handmade cotton rag paper stitched collage

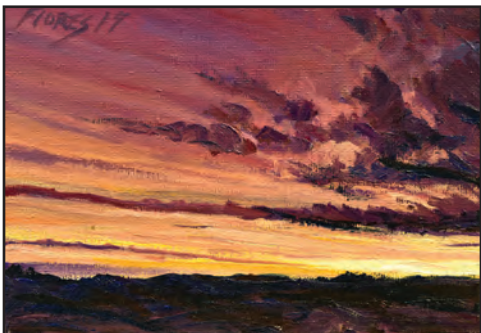
From the Flint Hills National Scenic Byway.



Michael Duane
Overland Park, KS

Flint Hills 177
pastel,
19 x 25

From the Flint Hills
National Scenic Byway,
near the 177 railroad
bridge between Matfield
Green and Bazaar -
looking north.



Noah Flores
Marquette, KS

At Bluestem Again
2019, oil on canvas

From the Post Rock Scenic Byway –
Wilson Lake Bluestem Campground.



Day Gives Way to Gold
2019, oil on canvas

From the Prairie Trail Scenic Byway
– south of K-4 (Prairie Trail) off 8th
Ave.



Wilson Lake Marina In Fall
2019, oil on canvas

From the Post Rock Scenic Byway.

Andrea Fuhrman
Abilene, KS

The Drive to Coronado Heights
2019, acrylic on Masonite,
48 x 30 inches

This piece makes small references to the Prairie Trail Scenic Byway. En route my partner and I passed the small bustling town of Lindsborg. Upon arrival at the castle, there is brilliant green and yellow lichen on the stones of the castle. The square windows inside the structure let in streams of light, as though a deity had touched them. The fields of many shades of green, brown and yellow, lay in an array visible 350 degrees. There's a form that looks like a vehicle, or train car (I live near the railroad tracks). We walked on a path under trees near the castle where there is dappled sunlight.



Sue Godwin
McPherson, KS

Cradled in Coronado's Heights
2019, acrylic on canvas,
26 x 40 inches

Many people are familiar with the Route 66 Historic Byway and the Flint Hills National Scenic Byway, however, the Prairie Trail Scenic Byway interested me because it might not be as familiar to people. I am fortunate to have this lovely byway right in my backyard.



Hugh Greer
Wichita, KS

Chase County Lake
2019, acrylic on
canvas,
14 x 20 inches

The lake depicted is just off
Highway 177 along the Flint Hills
National Scenic Byway - just west
of Cottonwood Falls.



Marco Hernandez
Wichita, Kansas

Flat Hills
2019, pastel

From the Flint Hills National Scenic
Byway between Wichita and Emporia.

Patrycia Ann Herndon
Dighton, KS

Once Almost Gone
2018, #2 & 6B graphite
pencils on Strathmore 500
Bristol board,
15 x 25 inches.

From Scott County State
Park along the Western
Vistas Historic Byway.





Brian Hinkle

Wichita, KS

Marquette, Kansas

2019, oil on canvas,

24 x 48 inches

From the Prairie Trail Scenic Byway, just north of Marquette, Kansas



Cally Krallman

Topeka, KS

*Cheyenne Bottoms
Chill*

2018, oil on canvas,
20 x 30 inches

From Cheyenne
Bottoms on the
Wetlands and
Wildlife National
Scenic Byway.

Oscar Larmer
Manhattan, KS

Rogers Ranch
watercolor and
mixed media,
14 x 21 inches

Flint Hills National
Scenic Byway.



Kevin Lundy
Wilson, KS

Trails
2019, oil on panel

Residing at the southern terminus of the Post Rock Scenic Byway I am afforded the great pleasure of a daily dose of visual delights of natural (and not-so-natural) beauty during regular strolls accompanied by a loyal comrade who assures me that there is no shortage of olfactory delights also.



Susan Lynn
Rockport, MA

Passing Shadows
2019, watercolor

Inspired by views of the Tallgrass Prairie National Preserve along the Flint Hills National Scenic Byway.

Justin Marable
Lawrence, KS

Once These Rails Were Golden
2015, serigraph/monoprint
30 x 44 inches

From the Flint Hills National Scenic Byway – Strong City, Kansas.





Angela Muller

Russell, KS

*Moonrise over a
Limestone Field*

2019, mixed media
(ground slate, sandstone,
and burnt wild sage from
Russell County on a
vintage flour sack),
30 x 40 inches

From the Post Rock
Scenic Byway

Doloris Pederson

Hays, KS

Marsh Watch

2019, oil on canvas,
30 x 40 inches

Cheyenne Bottoms on
the northwest side, from
the Wetlands and Wildlife
National Scenic Byway.





Marguerite Perret
Lawrence, KS

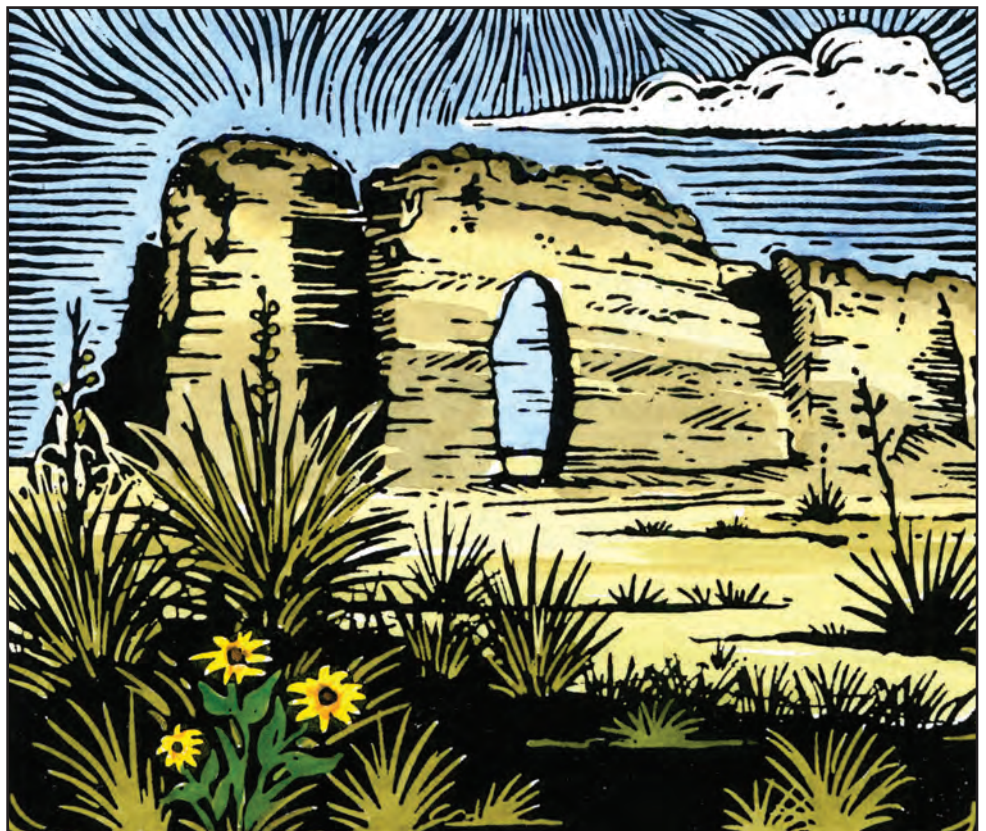
Detail from *Transmutation Still Life, Wilson Lake*
2019, porcelain, digital images and mixed media
on two custom display tables

Inspired by the Post
Rock Scenic Byway, near
Wilson Lake.

Stephen M. Perry
Wichita, KS

Monument Rock, Kansas
2019, mixed media print
(number 1 in an edition of 24),
4.75 x 5.5 inches

From the Western Vistas
Historic Byway in Gove County
– about 20 miles south of
Oakley and 7 miles east.





Randy Regier
Kansas City, KS

Tigo American Scenic Byway Action Set

2019, cast and thermoformed plastics, aluminum, and automotive acrylic urethane enamel, oil, and acrylic enamel on wood panel,
24 x 60 x 11 inches

From the intersection of Highway 177 and Highway 50 at Strong City on the Flint Hills National Scenic Byway.

Matthew Richter
McPherson, KS

Death of the Tallgrass Prairie

2019, oil,
48 x 36 inches

From the Flint Hills National
Scenic Byway





Angie Schafer

McPherson, KS

Five Milkweed Pods

2019, watercolor and collage

From the Prairie Trail Scenic Byway, between McPherson and Lindsborg

Dennis Schiel

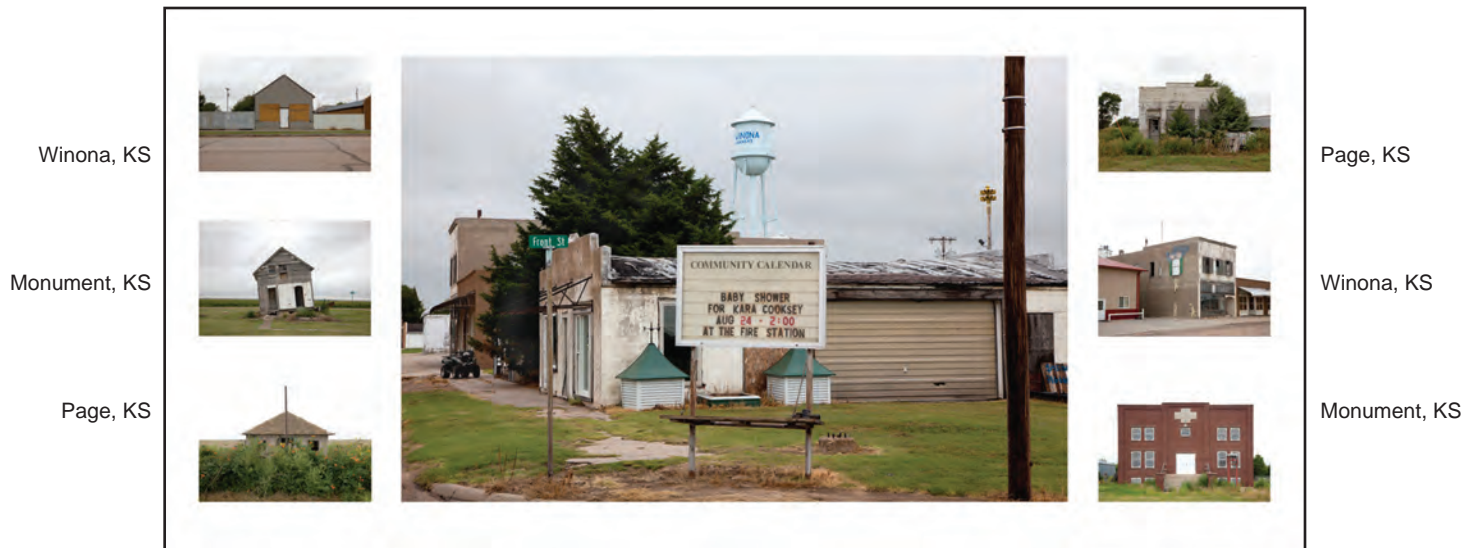
Hays, KS

*Arikaree Breaks/
Prairie Chickens*

2019, acrylic on canvas
24 x 30 inches

From the Land and Sky
Scenic Byway, north of
St. Francis.





Larry Schwarm
Wichita, KS

Winona, KS

Ghosts (Population Decline in Logan County)
2019, color photograph,
28.5 x 60 inches

From the Western Vistas Historic Byway.

Dee Erway Sherwood
McPherson, KS

Whooping Crane
2019, digital illustration,
30 x 20 inches

From the Wetlands and Wildlife National
Scenic Byway, Cheyenne Bottoms Refuge.



**Virginia Grass
Simmons**

Wichita, KS

The Matriarch

2016-17, oil on
canvas,
32 x 44 inches

From the Prairie
Trail Scenic Byway.



Paula Smith

Andover, KS

On the Trail at Maxwell

2019, watercolor,
6 x 9 inches

Buffalo at Maxwell Game Preserve, from the Prairie Trail Scenic Byway.



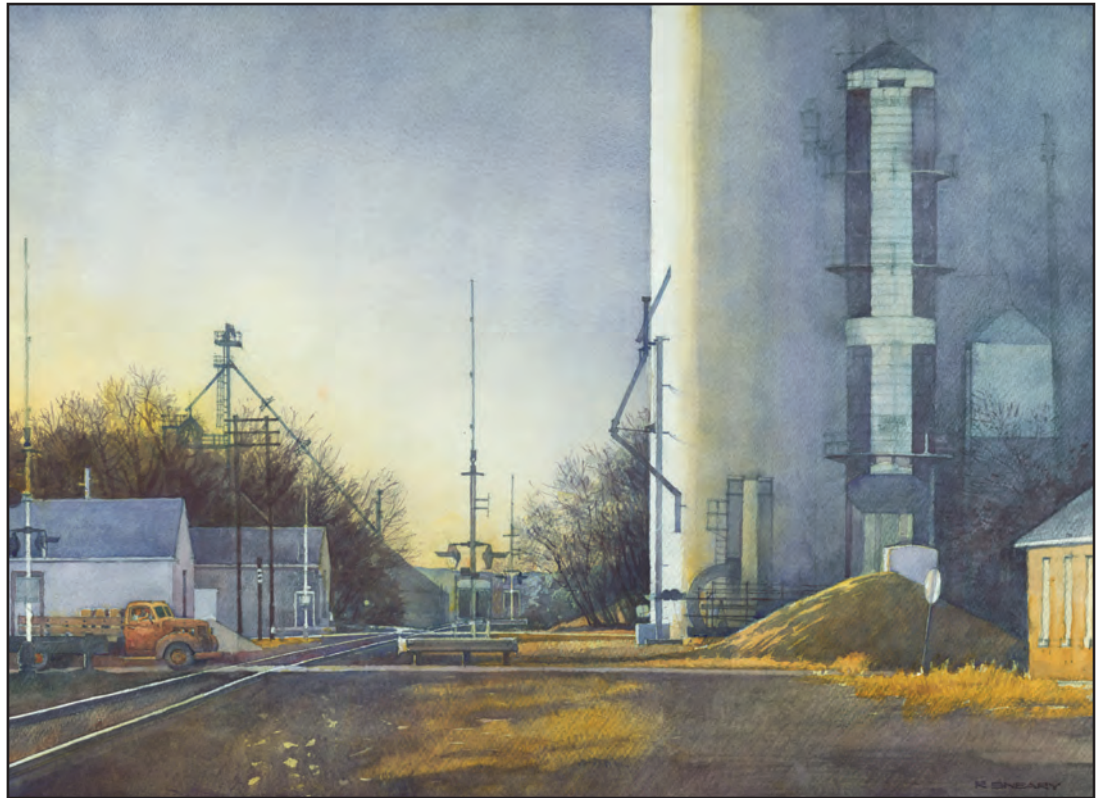
**Richard Russell
Sneary**

Kansas City, MO

The Crossing II

2019, watercolor

From the Native Stone
Scenic Byway.



Leon J. Staab

Hays, KS

Once Grand

2019, photograph on canvas

15 x 25 inches

Along a road that follows the south side of Lake Wilson near the Post Rock
Scenic Byway



On the front:



The Rock Ledge, Horse Thief Canyon by
Birger Sandzén, 1919, oil on canvas,
24 x 36 inches.

Greenough Collection, Birger Sandzén Memorial Gallery

